

Rates for select types of emergency department visits in Harris County, Texas, 2009

Patrick Courtney, MA

The University of Texas School of Public Health

May 2011

Introduction

The purpose of rate setting for health care utilization allows for a better understanding of the depth or nature of a problem. For example, if males and females each made up 50% of both emergency department visits and 50% of the population, then we can say that their pattern of ER use simply reflects the population. If, by contrast, they each make up 50% of the population, but that females make up 60% of ER visits, then we can say that females for whatever reason have a higher rate of ER use than males (and likewise that males have a lower rate). The present report uses recent data from the US Census Bureau to examine rates of emergency room use in Harris County, Texas, whose primary (but not only) city is Houston.

Methods

Emergency room data

The emergency room data collected were from an annual study of general emergency rooms that serve the Houston/Harris County 911 service area.¹ All such ERs are invited every year, but not all take part. Rates for the following 2009 emergency room visits were set in this report:

1. Total visits (all causes, all dispositions)
2. Primary care related visits (restricted to discharged/non hospitalized)
3. Admitted/hospitalized (all causes. Does not include direct admissions)

Analyses for the remaining are for both admitted and discharged:

4. Visits with an ambulance transport
5. Injuries and poisonings (ICD9 codes 800-999)
6. Respiratory conditions (ICD9 codes 460-519)
7. Mental health condition as the primary diagnosis (ICD9 codes 290-319)²
8. Alcohol condition as the primary diagnosis (ICD9 codes 290-319)²
9. Drug condition as the primary diagnosis (ICD9 codes 290-319)²
10. Simple BHED (primary diagnosis is either a mental health, drug or alcohol condition, but there is no other behavioral diagnosis)³
11. Complex BHED (primary diagnosis is either a mental health, drug or alcohol condition, and there is at least one other behavioral diagnosis)³
12. Medical BHED (primary diagnosis is a medical condition, and there is at least one behavioral diagnosis as well)³

1 Begley C, Courtney P, Burau K. Houston hospitals emergency department use study: January 1, 2009 through December 31, 2009. May 2011. Available at http://www.sph.uth.tmc.edu/uploadedFiles/Redesign_Website/Research/Research_Centers/Center_for_Health_Services_Research/HSRC/Final2009BegleyMonday.pdf

2 Also includes some codes from categories outside this range.

3 Courtney P. Emergency department visits for behavioral health conditions in Harris County, Texas, 2007-2008. August 2010. Available at http://www.sph.uth.tmc.edu/uploadedFiles/Redesign_Website/Research/Research_Centers/Center_for_Health_Services_Research/HSRC/ED_Visits_for_Behavioral_Health_Conditions_2007-2008.pdf

Census Bureau data

The American Community Survey, or ACS, is a nationwide survey from the US Census Bureau.¹ It is designed to take place between the decennial Census, and it addresses details that are no longer a part of the long form of the Census form. The following variables were used from the 2009 American Community Survey one year estimates (for Harris County, Texas):

1. Sex By Age (B01001).
2. Hispanic or Latino origin by race – referred to hereafter as race and ethnicity. In this variable, Whites, Blacks, Asians, and American Indians are separate from Hispanic (e.g. White alone) (C03002).
3. Types of Health Insurance Coverage by Age – referred to hereafter as payer source by age (B27010).
4. To supplement 2 and 3, only the uninsured estimates from the following variables were also used: Health insurance coverage by status by age: White alone (B27001A), Black or African American alone (B27001B), American Indian and Alaskan Native Alone (B27001C), Asian Alone (B27001D), and Hispanic or Latino (B27001I).

Adjustments

Sex by age – In 2009 there were 87 total ED visits by Harris County residents whose gender was not identified. Those visits are therefore not reflected in the tabulations for sex by age.

Race/Ethnicity – In 2009 there were 8,948 total ED visits by Harris County residents whose race or ethnicity was not identified. Those visits are therefore not included in the tabulations for race/ethnicity. Furthermore, in 2009 there were 24,505 total ED visits by Harris County residents whose race or ethnicity could only be categorized as “other.” Those visits were likewise not included in the tabulations for race/ethnicity.

In the 2009 ACS, the variable “Hispanic or Latino origin by race” included tabulations on the following that were not used here: Native Hawaiian and Other Pacific Islander alone, some other race alone, and two or more races. It was impossible to relate data for these tabulations to the ER data in any consistent way. It is possible that some of the ER visits were by persons who match one or another of the race/ethnicity categories from the ACS. However, that cannot be confirmed.

Payer source by age – In 2009 there were 5,195 total ED visits by Harris County residents whose payer source could not be determined. Those visits are therefore not included in the tabulations for payer source. The 212 visits by “other private” were added to the visits for the commercially insured. The majority of the 27,755 ED visits listed as “other government” have

¹ <http://www.census.gov/acs/www/>

usually been worker's compensation. Therefore, these visits are not included. Because the ACS did not have a separate tabulation for CHIP or SCHIP, and because of their historical association, ER visits for Medicaid and CHIP were added together.

In order to match the ED data, the following summations were made of the ACS data: commercial insurance (employer provided health insurance only, direct purchase health insurance only, employer provided and direct purchase coverage, employer provided and Medicare coverage), Medicare (Medicare only, Medicare and Medicaid only). In the cases of "employer provided and Medicare coverage" and "Medicare and Medicaid only," an assumption was made that the first one listed is the primary carrier.

The following ACS tabulations were not used: TRICARE/military health insurance only, VA Health coverage only, other public only combinations, and other coverage combinations.

For both the ER data and the ACS data, it is impossible to determine the presence or absence of a managed care plan (e.g. traditional Medicare vs. Medicare Advantage).

General comments

All rates are per 100 population of the specific denominator (e.g. total ER female visits divided by total female population). Even though the total population was used in the denominator, only the actual data from participating hospitals was used for the numerator. In the 2009 ER data, an estimated 74.04% of the ER visits to Harris County were included. Therefore, the rates here are likely an underestimate of what they would be if all general emergency rooms had taken part in the survey. Because of the variability among hospitals in such characteristics as payer source, it cannot be determined precisely how the missing data would have affect rates.

Results

Sex by Age (B01001)

Total – The highest rates were among adults age 80 and over (53.40 for females and 48.23 for males). The next highest cluster was for children age 4 and under (46.58 for males and 40.18 for males). The rate for females age 18 to 21 was double that of males age 18 to 21 (37.11 vs. 17.90). The lowest rate was for males age 30 to 39 (14.94) (Table 1 and Figure 1).

Primary care related – The highest rates were among children age 4 and under (23.57 for males and 20.79 for females). The rate for females age 18 to 21 was nearly triple that for males (17.70 vs. 6.15). Males age 15 to 17 and males age 30 to 39 were tied for having the lowest rates (5.35) (Table 2 and Figure 2).

Admitted/Hospitalized – The highest rates were among adults age 80 and over (21.14 for females, 18.96 for males). Except for females age 18 to 21, the rates remained fairly low until the

age of 60. Males (1.40) and females (1.24) aged 5 to 14 had the lowest rates (Table 3 and Figure 3).

Ambulance Transports – The highest rates were among adults age 80 and over (26.18 for females, 21.80 for males). The rates remained fairly low until the age of 60. Males (1.41) and females (1.14) age 5 to 14 had the lowest rates (Table 4 and Figure 4).

Injuries and Poisonings – The highest rates were among females age 80 and over (10.52). The rates for males age 80 and over (7.87) and males age 4 and under (7.57) were nearly identical. Rates for males were higher than rates for females until the age of 40 (Table 5 and Figure 5).

Respiratory Conditions – The highest rates were among children age 4 and under (12.21 for males and 9.61 for females). After that, rates dropped off sharply (rates for children age 4 and under were three times higher than for children age 5 to 14) (Table 6 and Figure 6).

Mental Health Conditions – The highest rates were among females age 80 and over (0.62). Females had higher rates than males for almost every age group (Table 7 and Figure 7).

Alcohol Conditions – In contrast to mental health conditions, males had higher rates than females for almost every age group. The highest rates were among males age 40 to 49 (0.31) and males age 50 to 59 (0.30). These two rates for males were two to three times higher than the corresponding rates for females (Table 8 and Figure 8).

Drug Conditions – Males generally had higher rates than females. The highest rate was 0.07 among males age 18 to 21. The rate among females age 60 to 64 (0.03) was three times higher than that among males age 60 to 64 (0.01) (Table 9 and Figure 9).

Simple BHED – Females had higher rates than males for most age groups. The highest rate was among females age 18 to 21 (0.45) (Table 10 and Figure 10).

Complex BHED – From the ages of 15 to 21, females had higher rates than males. However, the highest overall rate was among males age 40 to 40 (0.36) (Table 11 and Figure 11).

Medical BHED – Rates were low until the age of 70. The highest rate was among females age 80 and over (10.21), followed by males age 80 and over (6.98) (Table 12 and Figure 12).

Race/Ethnicity (C03002)

Total – Blacks had the highest rate (37.43), followed by Hispanics (20.31) and Whites (19.34) (Table 13 and Figure 13).

Primary Care Related – Blacks had the highest rate (17.40), nearly double that of Hispanics (9.21) and Whites (6.58) (Table 14 and Figure 14).

Admitted/Hospitalized – Blacks had the highest rate (5.71), more than double that of Hispanics (2.52). Whites had the second highest rate at 3.50 (Table 15 and Figure 15).

Ambulance Transports – Blacks had the highest rate (7.48), triple that of Hispanics (2.48). Whites had the second highest rate at 3.90 (Table 16 and Figure 16).

Injuries and Poisonings – Blacks had the highest rate (5.77). Whites had the second highest rate (4.60) (Table 17 and Figure 17).

Respiratory Conditions – Blacks had the highest rate (37.43), and Hispanics had the second highest rate (20.31) (Table 18 and Figure 18).

Mental Health Conditions – Blacks had the highest rate (0.48), followed by Whites (0.36) (Table 19 and Figure 19).

Alcohol Conditions – Whites had the highest rate (0.16), followed by Blacks (0.14) (Table 20 and Figure 20).

Drug Conditions – Blacks and Whites tied for having the highest rate (0.04) (Table 21 and Figure 21).

Simple BHED – Blacks had the highest rate (0.36), followed by Whites (0.29) (Table 22 and Figure 22).

Complex BHED – Blacks had the highest rate (0.30), followed by Whites (0.27) (Table 23 and Figure 23).

Medical BHED – Blacks had the highest rate (2.07), followed by Whites 1.83) (Table 24 and Figure 24).

Payer Source by Age (B27010)

Total Visits – Medicare enrollees age 35 to 64 had the highest rate (160.42). Medicaid enrollees age 17 and under had a rate more than three times than those with commercial insurance age 17 and under (44.47 vs. 12.48). However, Medicaid enrollees age 18 to 34 had a higher rate than Medicaid enrollees age 17 and under (71.85 vs. 44.47). The uninsured who were 65 and over had the highest rate of all the uninsured (55.78) (Table 25 and Figure 25).

Primary Care Related - Medicare enrollees age 35 to 64 had the highest rate (52.82). Medicaid enrollees age 17 and under had a rate more than four times than those with commercial insurance age 17 and under (22.78 vs. 4.89). However, Medicaid enrollees age 18 to 34 had a higher rate than Medicaid enrollees age 17 and under (31.80 vs. 22.78). The uninsured who were 65 and over had the highest rate of all the uninsured (19.75) (Table 26 and Figure 26).

Admitted/Hospitalized Visits – Medicare enrollees age 35 to 64 had the highest rate (42.62), and Medicare enrollees in other age groups had the second and third highest rates. The uninsured age 65 and over had the highest rate of all the uninsured (Table 27 and Figure 27).

Ambulance Transports – Medicare enrollees age 35 to 64 had the highest rate (54.91), nearly twice as high as Medicare enrollees age 65 and over (28.49). The uninsured age 65 and over had the highest rate of all the uninsured (Table 28 and Figure 28).

Injuries and Poisonings – Medicare enrollees age 35 to 64 had the highest rate (23.40), double that of Medicare enrollees age 65 and over (11.84). Medicaid enrollees age 17 and under (7.73) had a higher rate than Medicaid enrollees age 18 to 34 (6.62) (Table 29 and Figure 29).

Respiratory Conditions – Medicare enrollees age 35 to 64 had the highest rate (14.84). However, Medicaid enrollees age 17 and under had the second highest rate (10.90), and the latter was more than four times the rate for commercially insured children (2.22). Among the uninsured, children age 17 and under had the highest rate (3.91) (Table 30 and Figure 30).

Mental Health Conditions – Medicare enrollees age 35 to 64 had the highest rate (4.45), followed by Medicare enrollees age 18 to 34 (3.30). Medicaid enrollees age 18 to 34 (1.41) had a rate nearly triple that of uninsured persons age 18 to 34 (0.53) (Table 31 and Figure 31).

Alcohol Conditions – Medicare enrollees age 35 to 64 had the highest rate (1.31), four times that of Medicare enrollees age 18 to 34 (0.34) (Table 32 and Figure 32).

Drug Conditions – Medicare enrollees age 35 to 64 had the highest rate (0.32), followed by Medicare enrollees age 18 to 34 (0.21) (Table 33 and Figure 33).

Simple BHED – Medicare enrollees age 35 to 64 had the highest rate (3.02) (Table 34 and Figure 34).

Complex BHED – Medicare enrollees age 35 to 64 had the highest rate (3.17) (Table 35 and Figure 35).

Medical BHED – Medicare enrollees age 35 to 64 had the highest rate (22.84). Among other payer sources, Medicaid enrollees age 35 to 64 had the highest rate (6.09) (Table 36 and Figure 26).

For almost every type of visit, the commercially insured had the lowest rates.

Uninsured Race/Ethnicity by Age (B27001A, B27001B, B27001C, B27001D, B27001I)

Age 17 and under – Blacks had both the highest total rate (44.80) and the highest primary care related rate (22.72). The primary care rate for Blacks was nearly three times that of the primary care related rate for Hispanics (8.41) (Table 37 and Figure 37).

Age 18 to 34 – The pattern in this age group was similar to the pattern among children age 17 and under. Blacks age 18 to 34 had a higher rate of total visits (59.86) and primary care related visits (28.82) than Black children (Table 38 and Figure 38).

Age 35 to 64 – The pattern in this age group was similar to the pattern among children age 17 and under. Blacks age 35 to 64 had a higher rate of total visits (62.78) and primary care related visits (28.75) than Black children (Table 39 and Figure 39).

Age 65 and over – The pattern in this age group was similar to the pattern among children age 17 and under. Blacks age 18 to 34 had a higher rate of total visits (93.03) and primary care related visits (33.08) than Black children. The rate of total visits among the Asian elderly (44.58) was higher than among Hispanics (40.28) and Whites (16.53) (Table 40 and Figure 40).

As a convenient reference, Table 41 presents the single highest rate for most of the analyses presented here.

Discussion

These analyses were limited only to one county in Texas, and it cannot be determined how much rates were influenced by such things as the economic downturn and Texas policies on Medicaid enrollment. In addition, some of the diagnostic categories can be fairly broad. For example, “respiratory conditions” includes everything from acute respiratory infections to emphysema. Nevertheless, some conclusions are warranted.

Sex by Age

When measured in this manner, the highest rates of many emergency room visits were possibly related to stages of life. For example, the highest rates of any kind of ED visit were at the opposite ends of the age spectrum, and the highest rates of both admitted visits and ambulance transports were among the extreme elderly. Further exploration of the high rate of medical BHED visits among the extreme elderly may be needed to determine the most common secondary behavioral diagnoses (e.g. depression vs. dementia).

The highest rates of primary care related visits, as well as respiratory problems, were among infants and toddlers. To the extent that such problems could be seen in an outpatient setting, services must be tailored to their unique needs. It is impossible to determine from

available data whether or not the air quality in Harris County may be a factor in the high rate of respiratory problems among infants and toddlers. Comparisons should be made with comparable data sets elsewhere in the nation before conclusions can be drawn.

The high rate of total visits and primary care related visits among females age 18 and over, as with infants and toddlers, points to the need for specialized care. Some of the rise from one age group to the next may be due to developmental changes (since the rates for males at that age remain flat).

Race/Ethnicity

The highest rate of almost every type of emergency room visit was among Black non-Hispanics. Because the ACS variable for this combines all ages and does not reference payer source, other ACS variables were used to examine race/ethnicity, using only the uninsured and broken down by age. Even in that case, Black non Hispanics had the highest rate of both total visits and primary care related visits for each age group. A telephone survey¹ of Harris County residents (that dealt with healthcare decision making) found that there may be a preference among both insured and uninsured Black non Hispanics in Harris County for choosing the emergency room as a source of care. Such a preference is consistent with the rates found here. However, the reasons for that preference are a separate issue. The same survey also found that treatment for a new condition (for all racial and ethnic groups) is often a factor in choosing the emergency room as a source of care. The ER data, due in part to the nature of the ICD9 coding, is not structured in such a way to separate new from recurring cases of a particular condition.

Payer Source by Age

With almost no exception, the lowest rates for every age group were among the commercially insured, indicating they have the best access to health care. Except for respiratory conditions, the highest rates among the uninsured were among those age 65 and over. Since everyone over 65 qualifies for Medicare, there may be a group of elderly uninsured who need assistance paying for Medicare premiums. The rate of total visits among the uninsured Asian elderly is slightly higher than among the uninsured Hispanic elderly, and both groups have higher rates than the White elderly. Among the Asian and Hispanic elderly, culturally appropriate services and outreach may be necessary.

The highest rates for virtually every type of emergency department visit were among Medicare enrollees between the ages of 35 and 64. In other words, general analyses of rates of visits for Medicare enrollees are affected by non elderly Medicare enrollees. In fact, in this report the *second* highest rate for many visits were among Medicare enrollees age 18 to 34. Medicare enrollment below the age of 65 is nearly always due to some sort of disability. It is not clear from

1 Begley C, Behan P, Seo M. Who uses hospital emergency rooms? Evidence from Houston/Harris County Texas. *Journal of Health Care for the Poor and Underserved*, 21 (2010), 606-616.

either the emergency room data or the ACS data the nature of the disability of the non elderly Medicare enrollees, but the present rates indicate a high rate of ER use by non elderly Medicare enrollees.

This is further confirmed by an examination of the rates of ER use among Medicaid enrollees. With a few notable exceptions, the rates of visits for Medicaid enrollees age 18 to 34 were higher than among Medicaid enrollees age 17 and under. Medicaid can have many categories of eligibility, but it is unclear from the ER data and the ACS data which category of eligibility applies. According to the Texas Health and Human Services Commission,¹ in fiscal year 2010 66% of Medicaid enrollees in Texas were non disabled children, which means the remainder were non disabled adults, aged, and disabled of all ages. By contrast, non disabled children made up only 32% of Medicaid expenditures. Therefore, the majority of Medicaid expenditures are not spent on non disabled children. Even though the present report only focuses on emergency room use, it can be safely said that the highest rates of Medicaid use in the ER are among those who tend to have the highest expenditures. Focusing only on primary care related ER visits among children enrolled in Medicaid, for example, would make little dent in this problem.

¹ Suehls T. Presentation to the Medicaid Finance Subcommittee: Medicaid Overview. Texas Health and Human Services Commission, Feb.14, 2011. Available at <http://www.hhsc.state.tx.us/news/presentations/2011/sfc-medicaid-021411.pdf>

Table 1 and Figure 1: Sex By Age: Total Visits

ER Visits	Under 5	5 to 14	15 to 17	18-21	22-29	30-39	40-49	50-59	60-64	65-69	70-79	80 & over
Male	85,660	57,740	14,414	20,354	45,431	48,469	49,474	46,119	15,219	12,042	17,763	14,282
Female	71,044	48,456	19,139	37,930	75,465	71,433	62,172	52,026	19,020	15,136	25,832	28,647
Population Total	Under 5	5 to 14	15 to 17	18-21	22-29	30-39	40-49	50-59	60-64	65-69	70-79	80 & over
Male	183,890	326,370	91,191	113,726	263,058	324,321	281,946	237,146	79,386	52,982	59,762	29,615
Female	176,798	309,472	87,139	102,213	250,512	306,318	282,285	239,434	88,010	58,795	72,970	53,650
Rate/100:	Under 5	5 to 14	15 to 17	18-21	22-29	30-39	40-49	50-59	60-64	65-69	70-79	80 & over
Male	46.58	17.69	15.81	17.90	17.27	14.94	17.55	19.45	19.17	22.73	29.72	48.23
Female	40.18	15.66	21.96	37.11	30.12	23.32	22.02	21.73	21.61	25.74	35.40	53.40

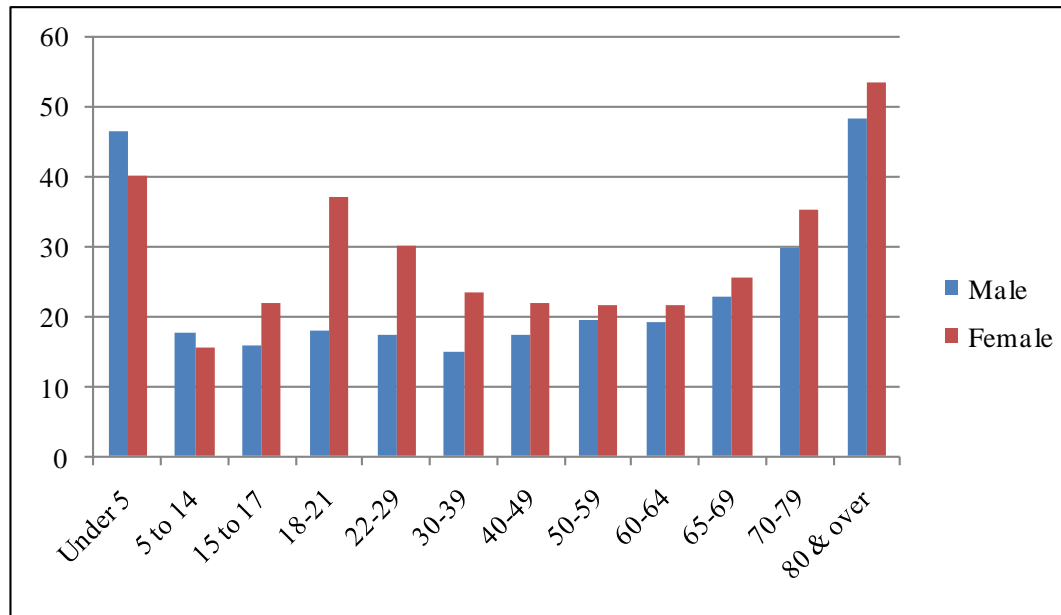


Table 2 and Figure 2: Sex By Age: Primary Care Related Visits

ER Visits	Under 5	5 to 14	15 to 17	18-21	22-29	30-39	40-49	50-59	60-64	65-69	70-79	80 and over
Male	43,346	25,087	4,878	6,991	16,284	17,336	17,387	15,323	4,649	3,481	4,548	2,892
Female	36,760	23,549	8,578	18,095	35,873	32,522	26,737	20,639	6,741	5,092	7,803	6,329
Population Total	Under 5	5 to 14	15 to 17	18-21	22-29	30-39	40-49	50-59	60-64	65-69	70-79	80 and over
Male	183,890	326,370	91,191	113,726	263,058	324,321	281,946	237,146	79,386	52,982	59,762	29,615
Female	176,798	309,472	87,139	102,213	250,512	306,318	282,285	239,434	88,010	58,795	72,970	53,650
Rate/100:	Under 5	5 to 14	15 to 17	18-21	22-29	30-39	40-49	50-59	60-64	65-69	70-79	80 and over
Male	23.57	7.69	5.35	6.15	6.19	5.35	6.17	6.46	5.86	6.57	7.61	9.76
Female	20.79	7.61	9.84	17.70	14.32	10.62	9.47	8.62	7.66	8.66	10.69	11.80

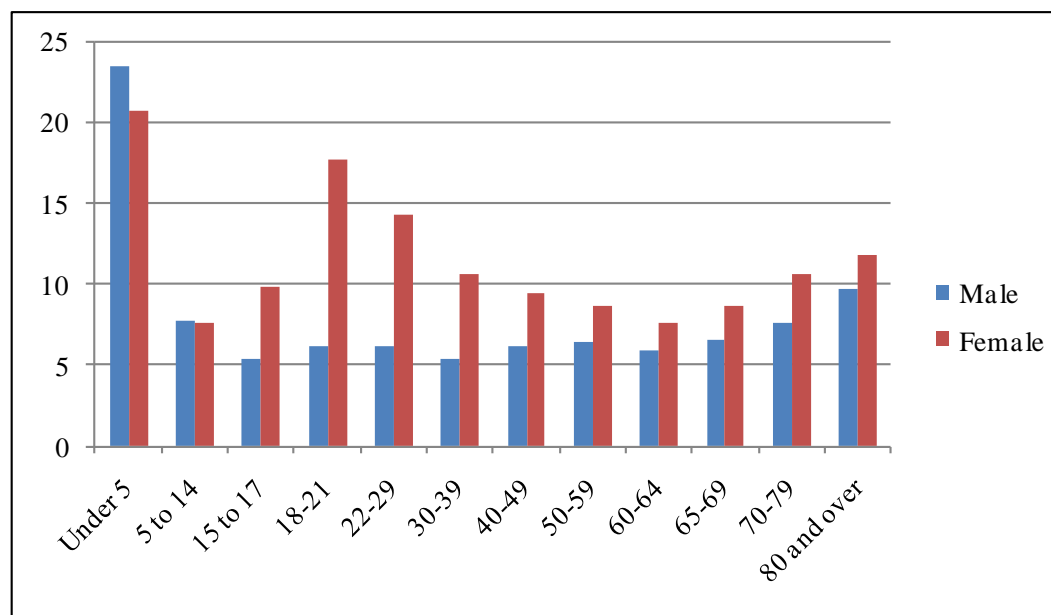


Table 3 and Figure 3: Sex By Age: Admitted/Hospitalized Visits

ER Visits	Under 5	5 to 14	15 to 17	18-21	22-29	30-39	40-49	50-59	60-64	65-69	70-79	80 and over
Male	7,448	4,584	1,361	2,162	5,658	6,555	8,463	9,726	3,729	3,227	5,529	5,616
Female	6,122	3,845	1,927	4,585	8,711	8,355	8,445	8,360	3,921	3,501	7,328	11,341
Population Total	Under 5	5 to 14	15 to 17	18-21	22-29	30-39	40-49	50-59	60-64	65-69	70-79	80 and over
Male	183,890	326,370	91,191	113,726	263,058	324,321	281,946	237,146	79,386	52,982	59,762	29,615
Female	176,798	309,472	87,139	102,213	250,512	306,318	282,285	239,434	88,010	58,795	72,970	53,650
Rate/100:	Under 5	5 to 14	15 to 17	18-21	22-29	30-39	40-49	50-59	60-64	65-69	70-79	80 and over
Male	4.05	1.40	1.49	1.90	2.15	2.02	3.00	4.10	4.70	6.09	9.25	18.96
Female	3.46	1.24	2.21	4.49	3.48	2.73	2.99	3.49	4.46	5.95	10.04	21.14

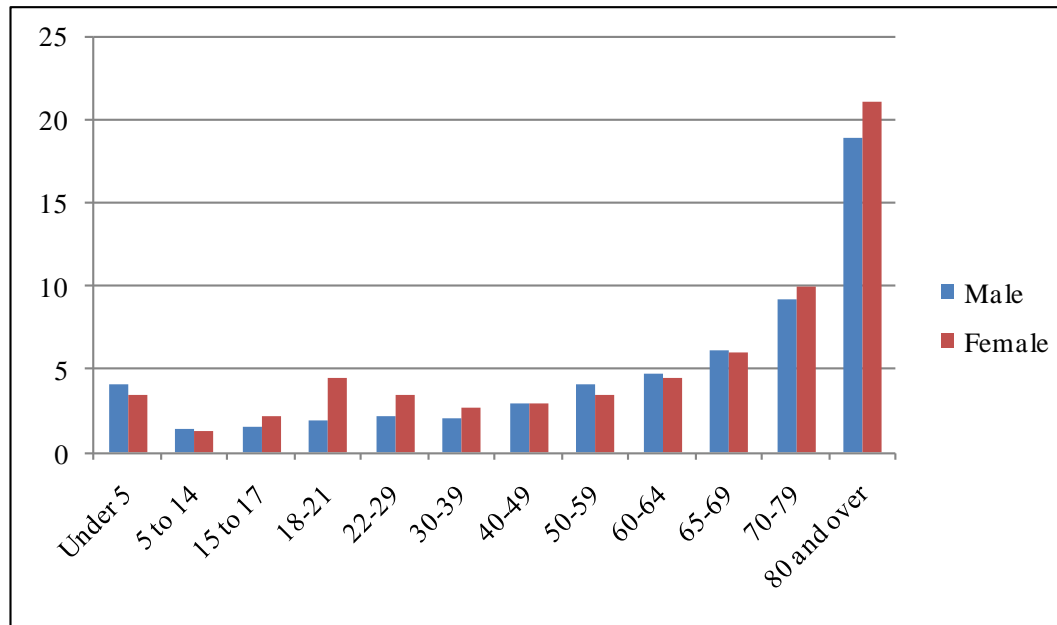


Table 4 and Figure 4: Sex By Age: Visits with an Ambulance Transport

ER Visits	Under 5	5 to 14	15 to 17	18-21	22-29	30-39	40-49	50-59	60-64	65-69	70-79	80 and over
Male	5,506	4,586	1,948	3,533	7,663	8,603	10,191	10,892	4,118	3,538	6,222	6,456
Female	4,270	3,541	2,279	4,458	8,618	9,258	10,738	10,815	4,849	4,312	9,084	14,045
Population Total	Under 5	5 to 14	15 to 17	18-21	22-29	30-39	40-49	50-59	60-64	65-69	70-79	80 and over
Male	183,890	326,370	91,191	113,726	263,058	324,321	281,946	237,146	79,386	52,982	59,762	29,615
Female	176,798	309,472	87,139	102,213	250,512	306,318	282,285	239,434	88,010	58,795	72,970	53,650
Rate/100:	Under 5	5 to 14	15 to 17	18-21	22-29	30-39	40-49	50-59	60-64	65-69	70-79	80 and over
Male	2.99	1.41	2.14	3.11	2.91	2.65	3.61	4.59	5.19	6.68	10.41	21.80
Female	2.42	1.14	2.62	4.36	3.44	3.02	3.80	4.52	5.51	7.33	12.45	26.18

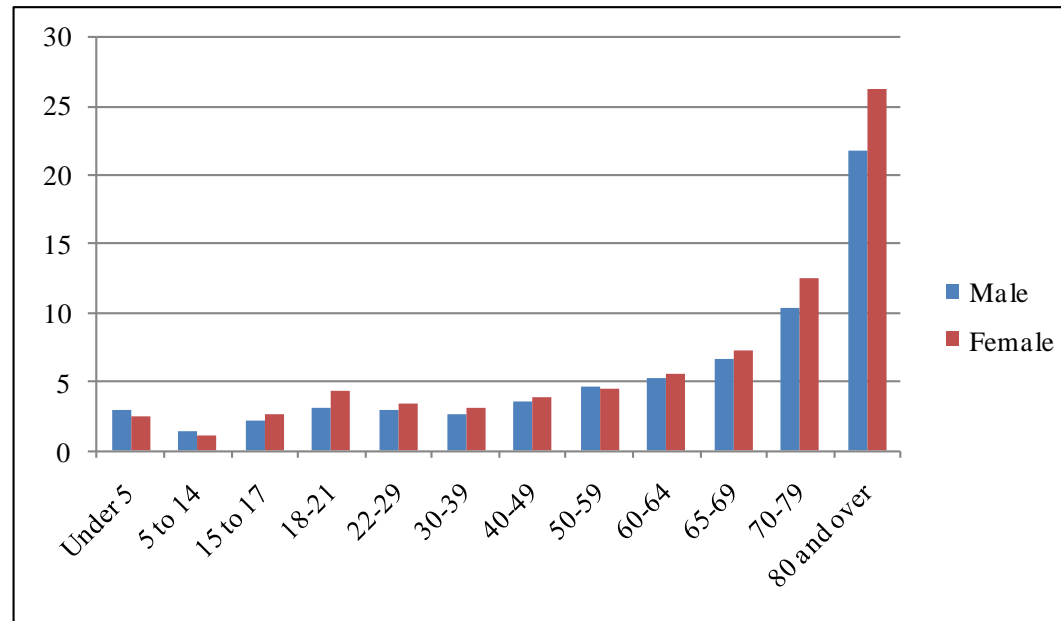


Table 5 and Figure 5: Sex By Age: Injuries and Poisonings

ER Visits	Under 5	5 to 14	15 to 17	18-21	22-29	30-39	40-49	50-59	60-64	65-69	70-79	80 and over
Male	13,918	17,047	5,601	7,343	13,628	12,117	9,995	7,572	2,155	1,749	2,507	2,331
Female	10,369	10,700	3,584	4,796	9,818	10,122	9,801	8,774	3,132	2,496	4,423	5,644
Population Total	Under 5	5 to 14	15 to 17	18-21	22-29	30-39	40-49	50-59	60-64	65-69	70-79	80 and over
Male	183,890	326,370	91,191	113,726	263,058	324,321	281,946	237,146	79,386	52,982	59,762	29,615
Female	176,798	309,472	87,139	102,213	250,512	306,318	282,285	239,434	88,010	58,795	72,970	53,650
Rate/100:	Under 5	5 to 14	15 to 17	18-21	22-29	30-39	40-49	50-59	60-64	65-69	70-79	80 and over
Male	7.57	5.22	6.14	6.46	5.18	3.74	3.55	3.19	2.71	3.30	4.19	7.87
Female	5.86	3.46	4.11	4.69	3.92	3.30	3.47	3.66	3.56	4.25	6.06	10.52

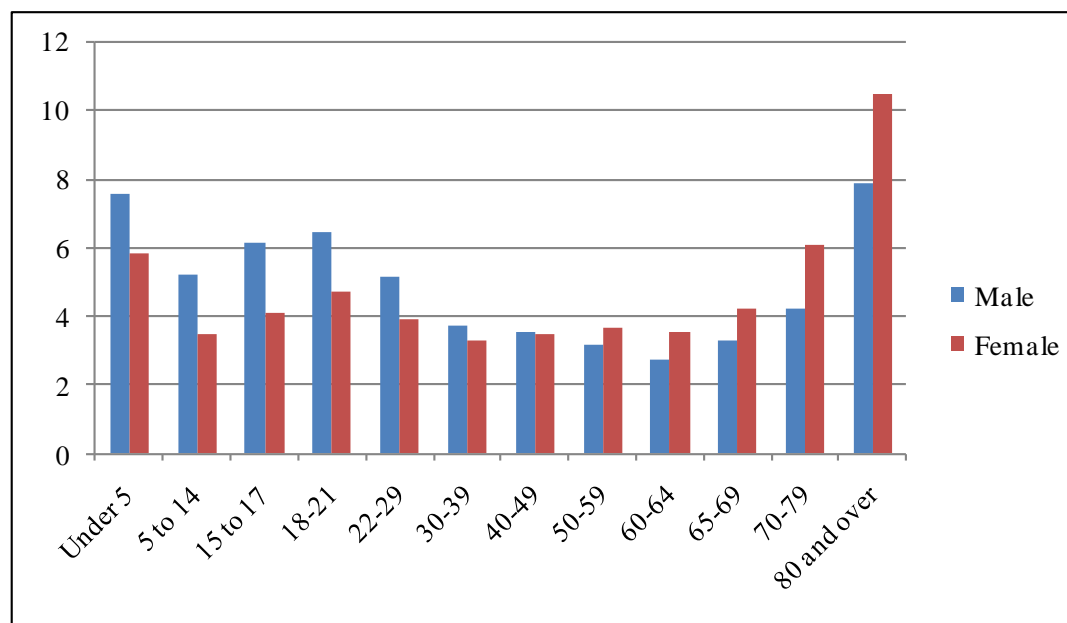


Table 6 and Figure 6: Sex By Age: Respiratory Conditions

ER Visits	Under 5	5 to 14	15 to 17	18-21	22-29	30-39	40-49	50-59	60-64	65-69	70-79	80 and over
Male	22,448	11,371	1,701	1,800	3,559	3,159	2,915	2,852	1,177	1,131	1,834	1,459
Female	16,985	9,380	1,896	2,643	5,446	4,920	4,749	4,344	1,722	1,436	2,489	2,533
Population Total	Under 5	5 to 14	15 to 17	18-21	22-29	30-39	40-49	50-59	60-64	65-69	70-79	80 and over
Male	183,890	326,370	91,191	113,726	263,058	324,321	281,946	237,146	79,386	52,982	59,762	29,615
Female	176,798	309,472	87,139	102,213	250,512	306,318	282,285	239,434	88,010	58,795	72,970	53,650
Rate/100:	Under 5	5 to 14	15 to 17	18-21	22-29	30-39	40-49	50-59	60-64	65-69	70-79	80 and over
Male	12.21	3.48	1.87	1.58	1.35	0.97	1.03	1.20	1.48	2.13	3.07	4.93
Female	9.61	3.03	2.18	2.59	2.17	1.61	1.68	1.81	1.96	2.44	3.41	4.72

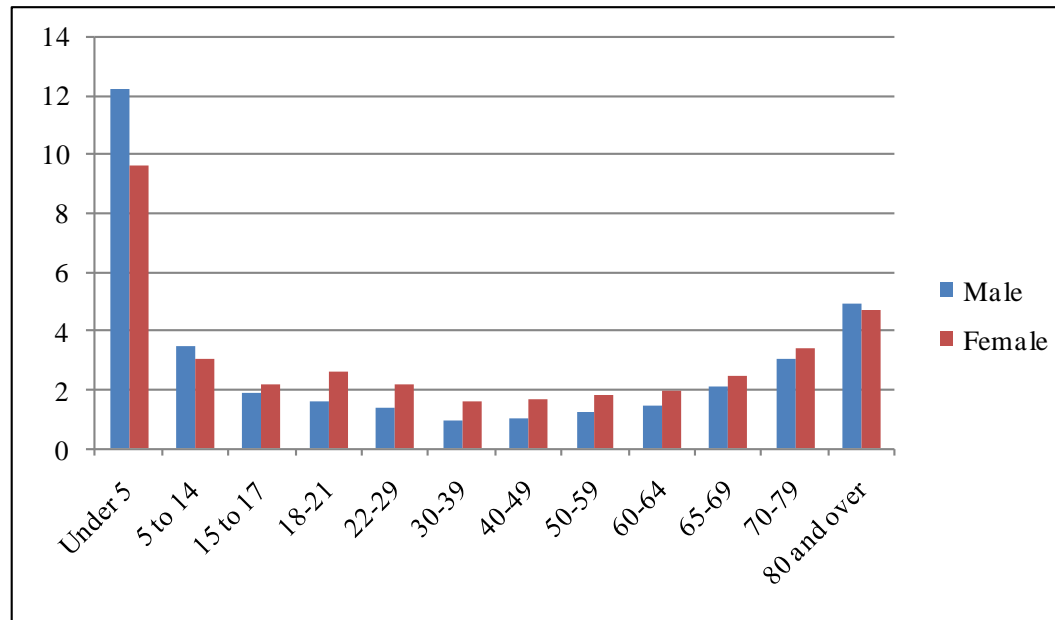


Table 7 and Figure 7: Sex By Age: Mental Health as Primary Diagnosis

ER Visits	Under 5	5 to 14	15 to 17	18-21	22-29	30-39	40-49	50-59	60-64	65-69	70-79	80 and over
Male	41	333	238	431	1,006	1,014	911	648	130	127	140	147
Female	27	281	412	561	1,343	1,416	1,248	938	252	195	288	332
Population Total	Under 5	5 to 14	15 to 17	18-21	22-29	30-39	40-49	50-59	60-64	65-69	70-79	80 and over
Male	183,890	326,370	91,191	113,726	263,058	324,321	281,946	237,146	79,386	52,982	59,762	29,615
Female	176,798	309,472	87,139	102,213	250,512	306,318	282,285	239,434	88,010	58,795	72,970	53,650
Rate/100:	Under 5	5 to 14	15 to 17	18-21	22-29	30-39	40-49	50-59	60-64	65-69	70-79	80 and over
Male	0.02	0.10	0.26	0.38	0.38	0.31	0.32	0.27	0.16	0.24	0.23	0.50
Female	0.02	0.09	0.47	0.55	0.54	0.46	0.44	0.39	0.29	0.33	0.39	0.62

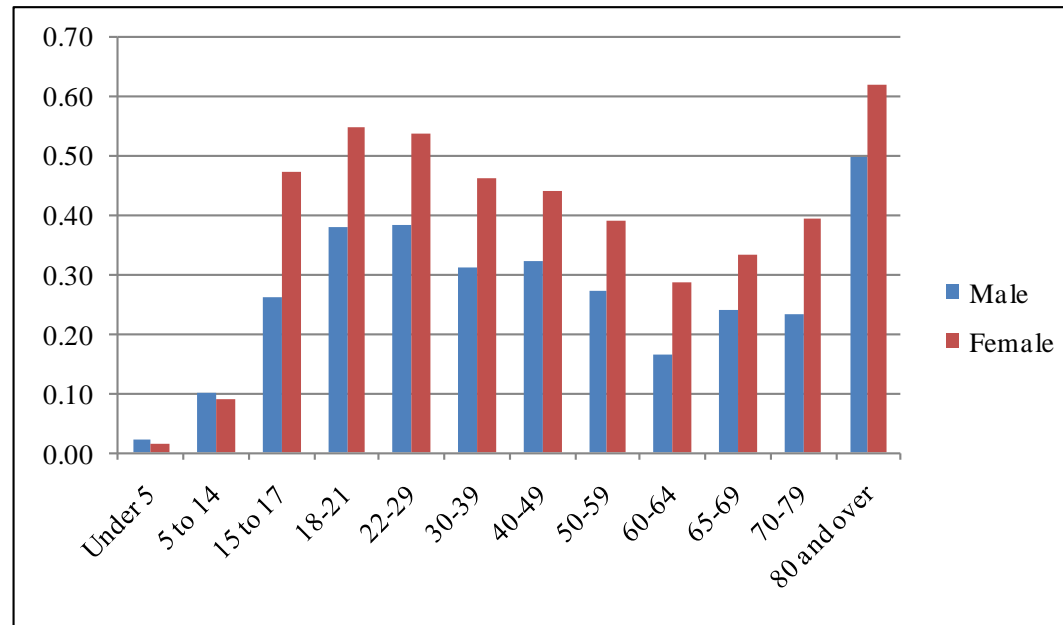


Table 8 and Figure 8: Sex By Age: Alcohol as Primary Diagnosis

ER Visits	Under 5	5 to 14	15 to 17	18-21	22-29	30-39	40-49	50-59	60-64	65-69	70-79	80 and over
Male	0	22	76	198	492	647	864	709	149	77	67	20
Female	2	16	76	171	259	282	372	240	49	18	31	7
Population Total	Under 5	5 to 14	15 to 17	18-21	22-29	30-39	40-49	50-59	60-64	65-69	70-79	80 and over
Male	183,890	326,370	91,191	113,726	263,058	324,321	281,946	237,146	79,386	52,982	59,762	29,615
Female	176,798	309,472	87,139	102,213	250,512	306,318	282,285	239,434	88,010	58,795	72,970	53,650
Rate/100:	Under 5	5 to 14	15 to 17	18-21	22-29	30-39	40-49	50-59	60-64	65-69	70-79	80 and over
Male	0.00	0.01	0.08	0.17	0.19	0.20	0.31	0.30	0.19	0.15	0.11	0.07
Female	0.00	0.01	0.09	0.17	0.10	0.09	0.13	0.10	0.06	0.03	0.04	0.01

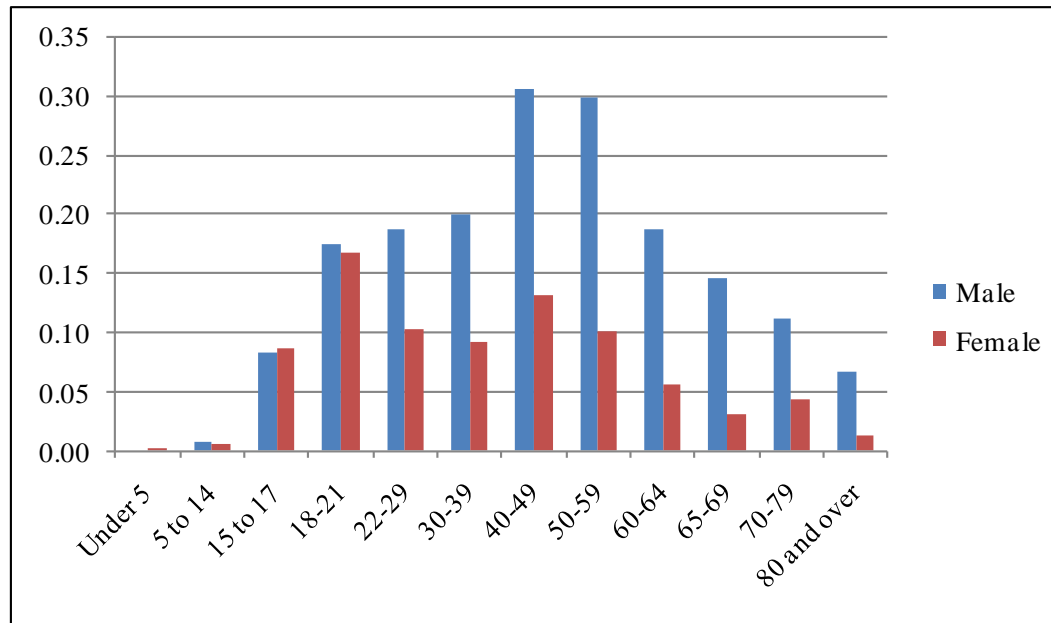


Table 9 and Figure 9: Drug as Primary Diagnosis

ER Visits	Under 5	5 to 14	15 to 17	18-21	22-29	30-39	40-49	50-59	60-64	65-69	70-79	80 and over
Male	1	14	47	84	156	136	114	96	11	10	7	11
Female	1	14	27	51	101	116	78	69	24	10	14	13
Population Total	Under 5	5 to 14	15 to 17	18-21	22-29	30-39	40-49	50-59	60-64	65-69	70-79	80 and over
Male	183,890	326,370	91,191	113,726	263,058	324,321	281,946	237,146	79,386	52,982	59,762	29,615
Female	176,798	309,472	87,139	102,213	250,512	306,318	282,285	239,434	88,010	58,795	72,970	53,650
Rate/100:	Under 5	5 to 14	15 to 17	18-21	22-29	30-39	40-49	50-59	60-64	65-69	70-79	80 and over
Male	0.00	0.00	0.05	0.07	0.06	0.04	0.04	0.04	0.01	0.02	0.01	0.04
Female	0.00	0.00	0.03	0.05	0.04	0.04	0.03	0.03	0.03	0.02	0.02	0.02

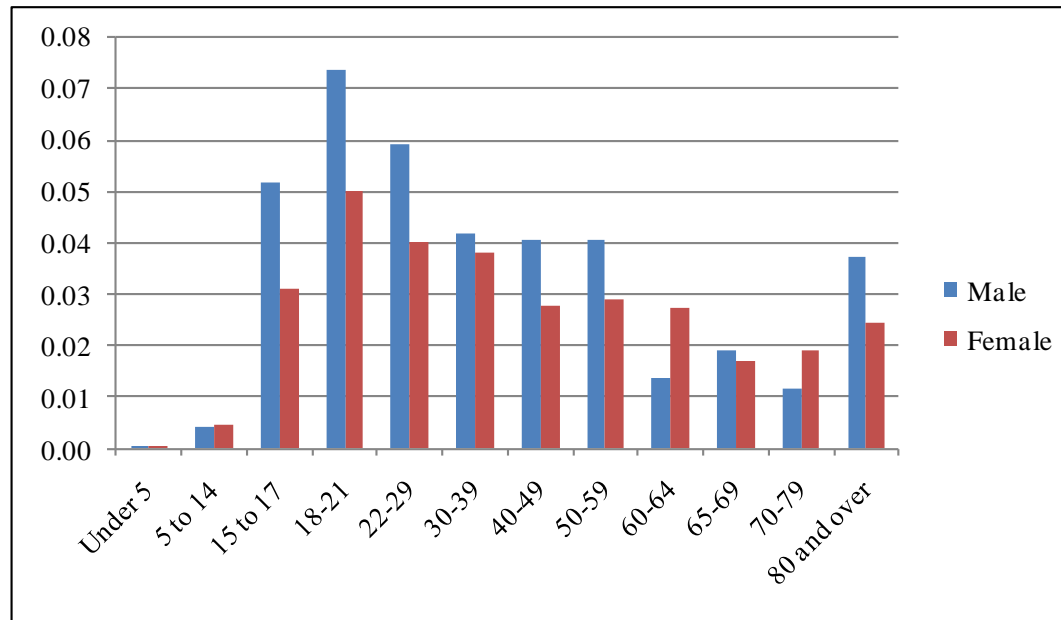


Table 10 and Figure 10: Sex By Age: Simple BHED

ER Visits	Under 5	5 to 14	15 to 17	18-21	22-29	30-39	40-49	50-59	60-64	65-69	70-79	80 and over
Male	35	238	214	368	891	938	887	708	160	133	134	110
Female	26	212	350	463	974	1,027	912	740	198	148	201	234
Population Total	Under 5	5 to 14	15 to 17	18-21	22-29	30-39	40-49	50-59	60-64	65-69	70-79	80 and over
Male	183,890	326,370	91,191	113,726	263,058	324,321	281,946	237,146	79,386	52,982	59,762	29,615
Female	176,798	309,472	87,139	102,213	250,512	306,318	282,285	239,434	88,010	58,795	72,970	53,650
Rate/100:	Under 5	5 to 14	15 to 17	18-21	22-29	30-39	40-49	50-59	60-64	65-69	70-79	80 and over
Male	0.02	0.07	0.23	0.32	0.34	0.29	0.31	0.30	0.20	0.25	0.22	0.37
Female	0.01	0.07	0.40	0.45	0.39	0.34	0.32	0.31	0.22	0.25	0.28	0.44

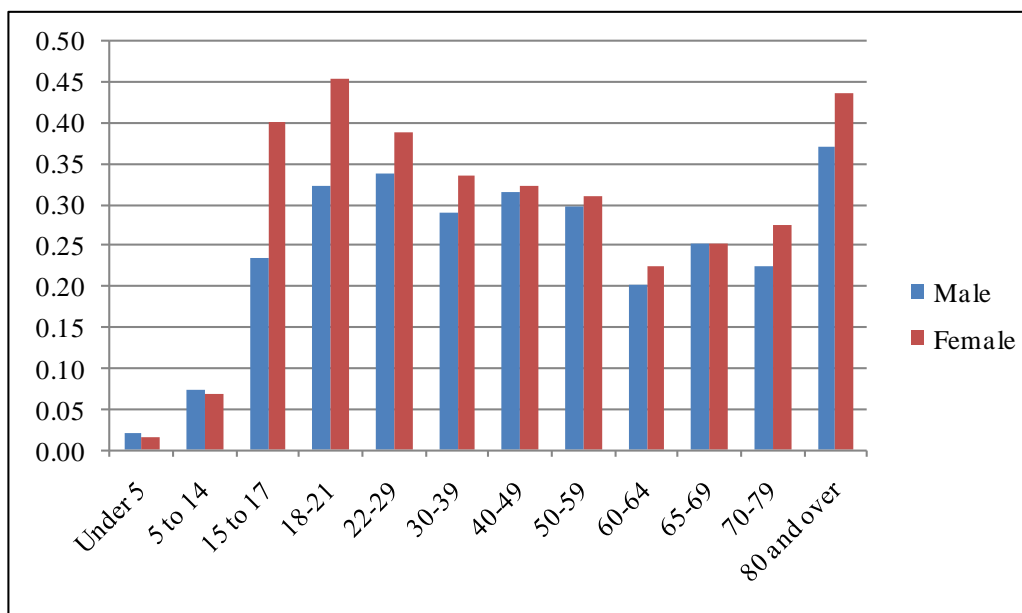


Table 11 and Figure 11: Complex BHED

ER Visits	Under 5	5 to 14	15 to 17	18-21	22-29	30-39	40-49	50-59	60-64	65-69	70-79	80 and over
Male	7	131	147	345	763	859	1,002	745	130	81	80	68
Female	4	99	165	320	729	787	786	507	127	75	132	118
Population Total	Under 5	5 to 14	15 to 17	18-21	22-29	30-39	40-49	50-59	60-64	65-69	70-79	80 and over
Male	183,890	326,370	91,191	113,726	263,058	324,321	281,946	237,146	79,386	52,982	59,762	29,615
Female	176,798	309,472	87,139	102,213	250,512	306,318	282,285	239,434	88,010	58,795	72,970	53,650
Rate/100:	Under 5	5 to 14	15 to 17	18-21	22-29	30-39	40-49	50-59	60-64	65-69	70-79	80 and over
Male	0.00	0.04	0.16	0.30	0.29	0.26	0.36	0.31	0.16	0.15	0.13	0.23
Female	0.00	0.03	0.19	0.31	0.29	0.26	0.28	0.21	0.14	0.13	0.18	0.22

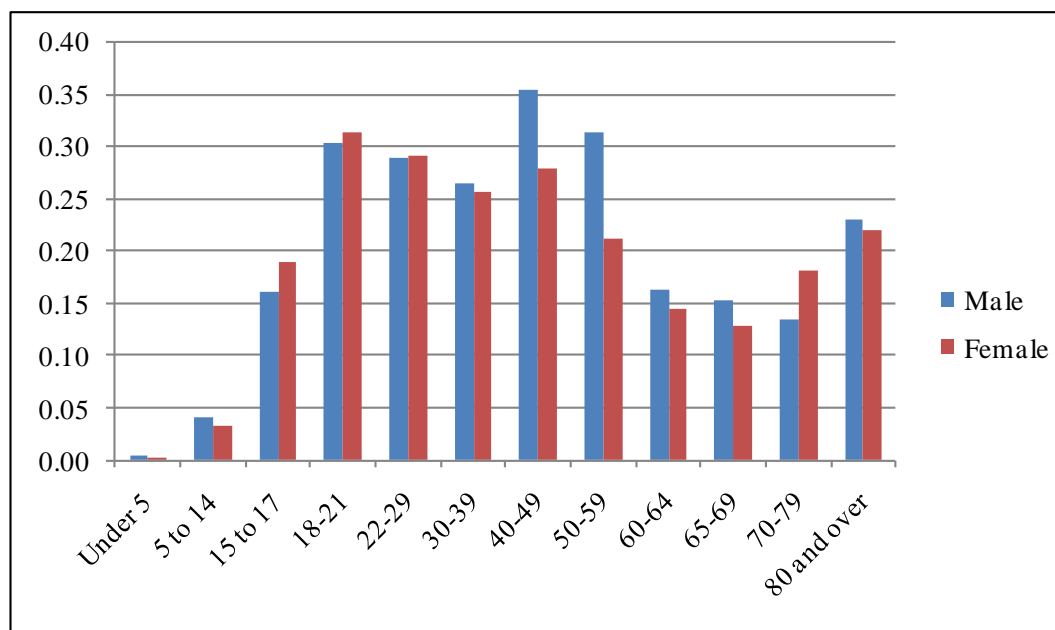


Table 12 and Figure 12: Medical BHED

ER Visits	Under 5	5 to 14	15 to 17	18-21	22-29	30-39	40-49	50-59	60-64	65-69	70-79	80 and over
Male	257	1,262	657	1,130	2,891	3,414	4,348	4,294	1,268	901	1,635	2,067
Female	184	688	798	1,296	3,067	3,877	5,026	4,554	1,621	1,311	2,830	5,480
Population Total	Under 5	5 to 14	15 to 17	18-21	22-29	30-39	40-49	50-59	60-64	65-69	70-79	80 and over
Male	183,890	326,370	91,191	113,726	263,058	324,321	281,946	237,146	79,386	52,982	59,762	29,615
Female	176,798	309,472	87,139	102,213	250,512	306,318	282,285	239,434	88,010	58,795	72,970	53,650
Rate/100:	Under 5	5 to 14	15 to 17	18-21	22-29	30-39	40-49	50-59	60-64	65-69	70-79	80 and over
Male	0.14	0.39	0.72	0.99	1.10	1.05	1.54	1.81	1.60	1.70	2.74	6.98
Female	0.10	0.22	0.92	1.27	1.22	1.27	1.78	1.90	1.84	2.23	3.88	10.21

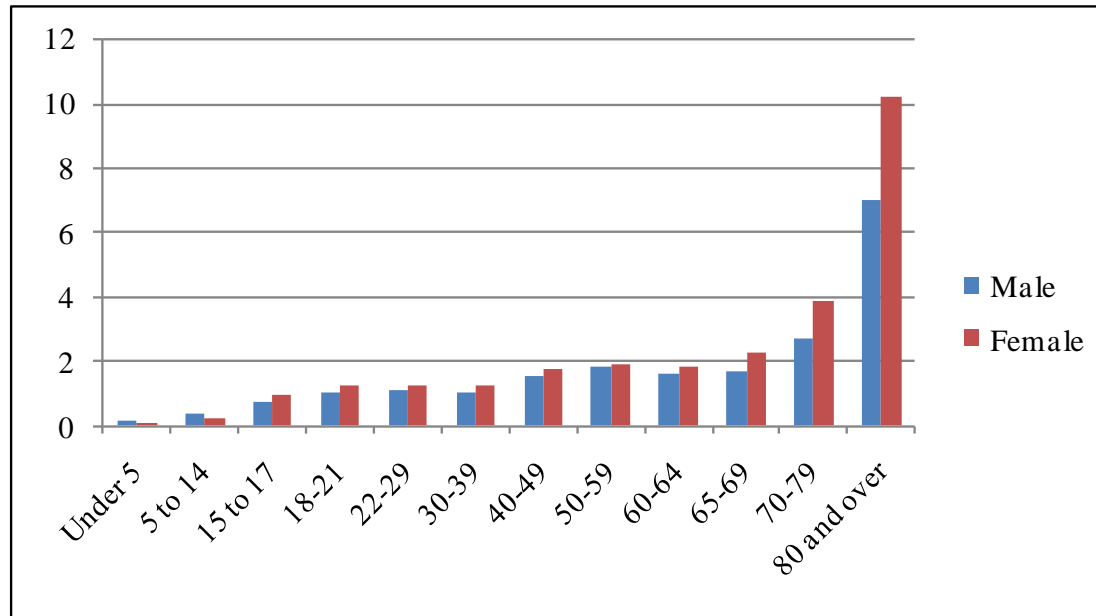


Table 13 and Figure 13: Race and Ethnicity: Total Visits

	Asian	Black	Hispanic	Am. Indian	White
ER Visits	16,286	273,373	328,973	757	279,543
Population Total	232,385	730,412	1,619,426	6,455	1,430,875
Rate/100	7.01	37.43	20.31	11.73	19.54

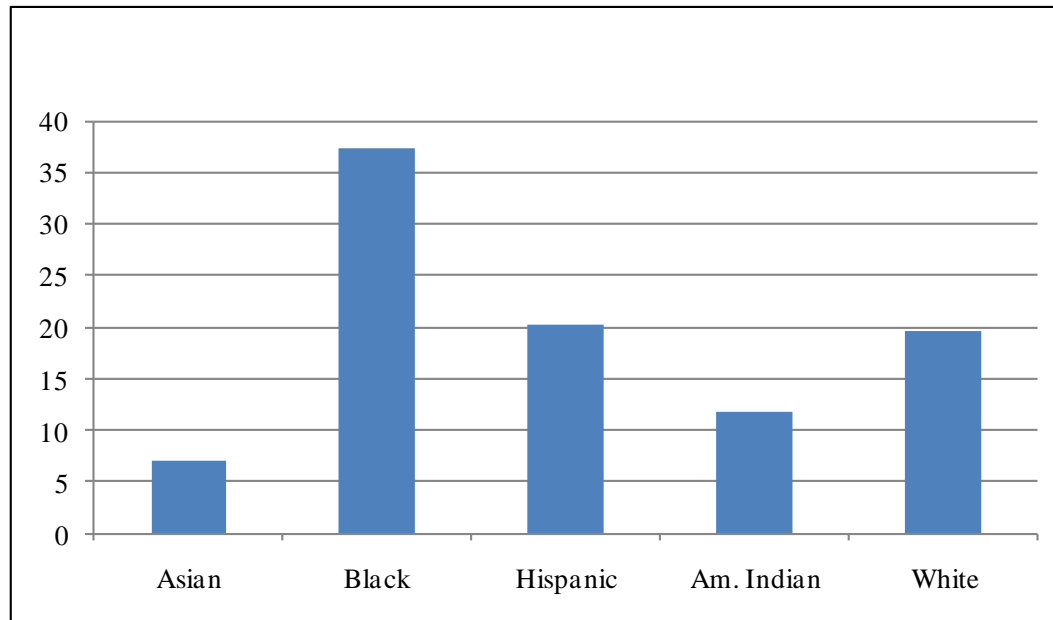


Table 14 and Figure 14: Race and Ethnicity: Primary Care Related Visits

	Asian	Black	Hispanic	Am. Indian	White
ER Visits	6,040	127,095	149,100	331	94,205
Population Total	232,385	730,412	1,619,426	6,455	1,430,875
Rate/100	2.60	17.40	9.21	5.12	6.58

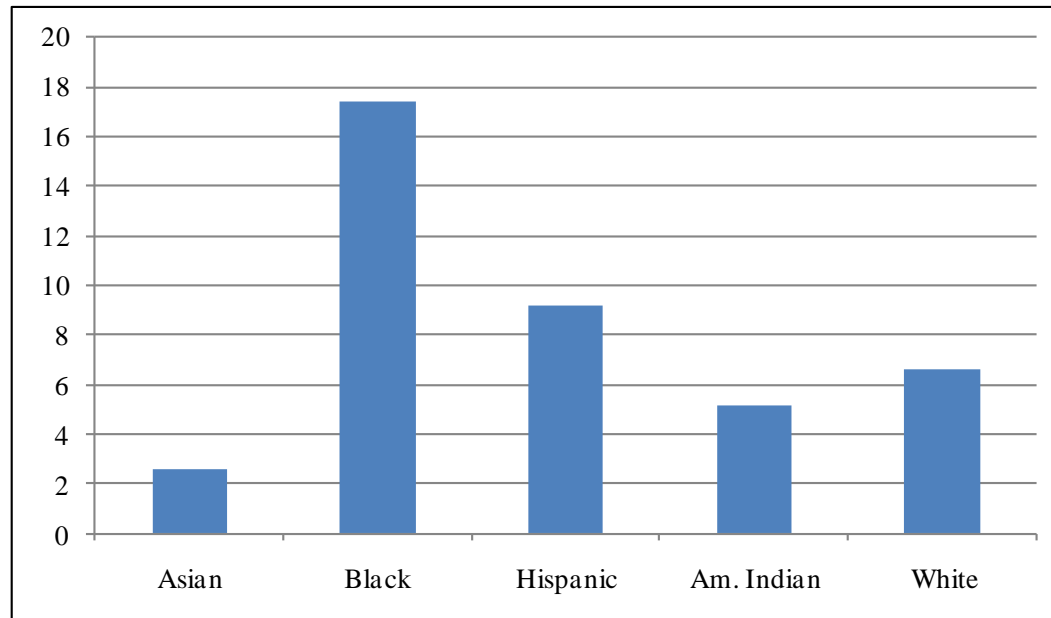


Table 15 and Figure 15: Race and Ethnicity: Admitted/Hospitalized Visits

	Asian	Black	Hispanic	Am. Indian	White
ER Visits	2,914	41,709	40,867	122	50,058
Population Total	232,385	730,412	1,619,426	6,455	1,430,875
Rate/100	1.25	5.71	2.52	1.89	3.50

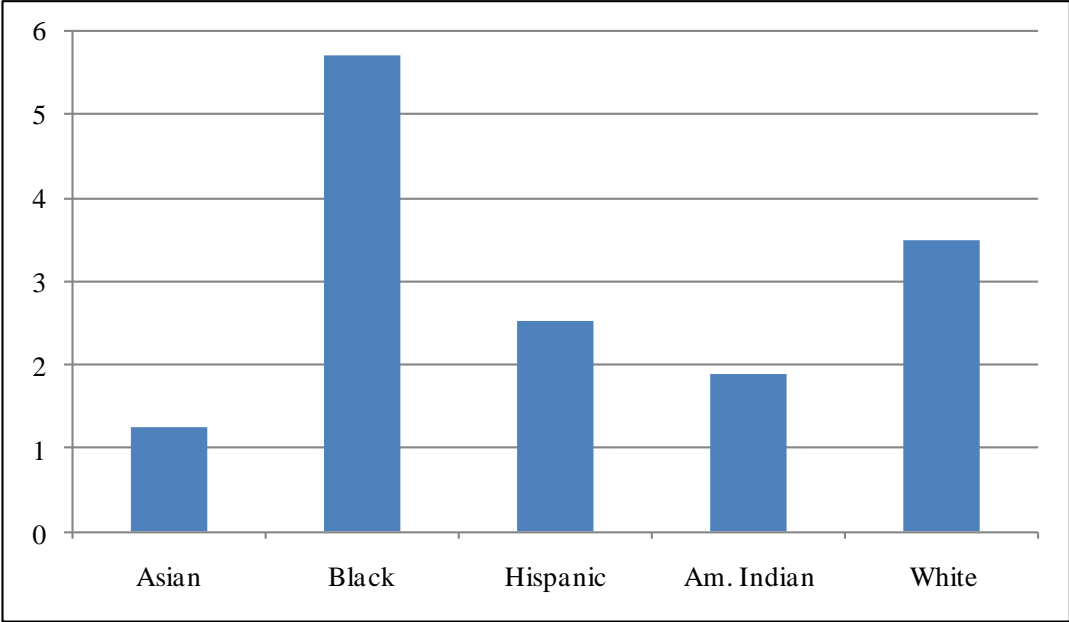


Table 16 and Figure 16: Race and Ethnicity: Visits with an Ambulance Transport

	Asian	Black	Hispanic	Am. Indian	White
ER Visits	3,185	54,656	40,132	137	55,760
Population Total	232,385	730,412	1,619,426	6,455	1,430,875
Rate/100	1.37	7.48	2.48	2.12	3.90

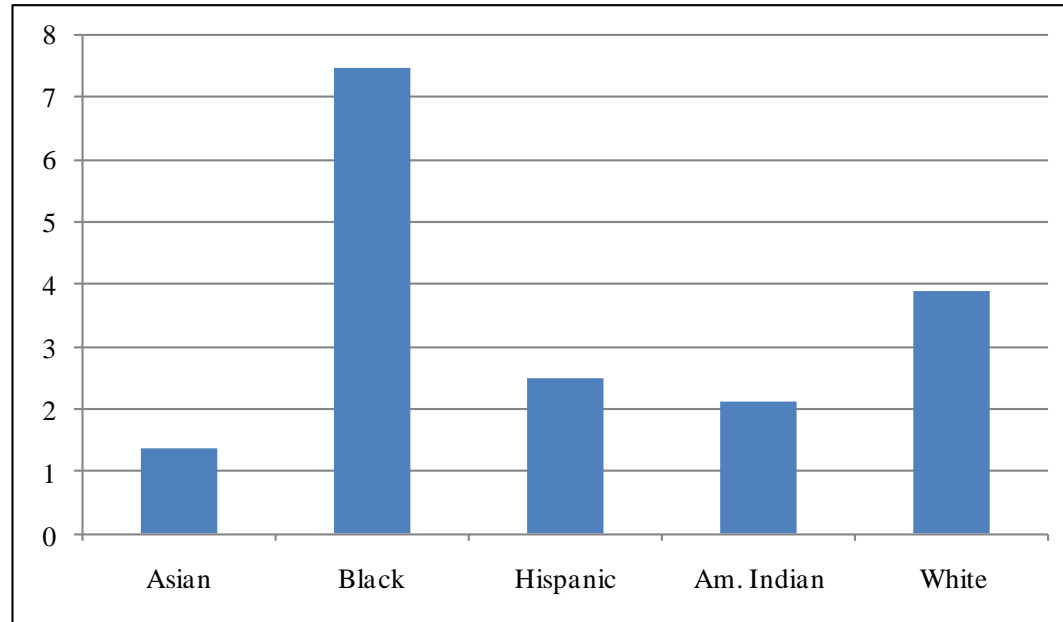


Table 17 and Figure 17: Race and Ethnicity: Injuries and Poisonings

	Asian	Black	Hispanic	Am. Indian	White
ER Visits	3,568	42,139	60,262	144	65,817
Population Total	232,385	730,412	1,619,426	6,455	1,430,875
Rate/100	1.54	5.77	3.72	2.23	4.60

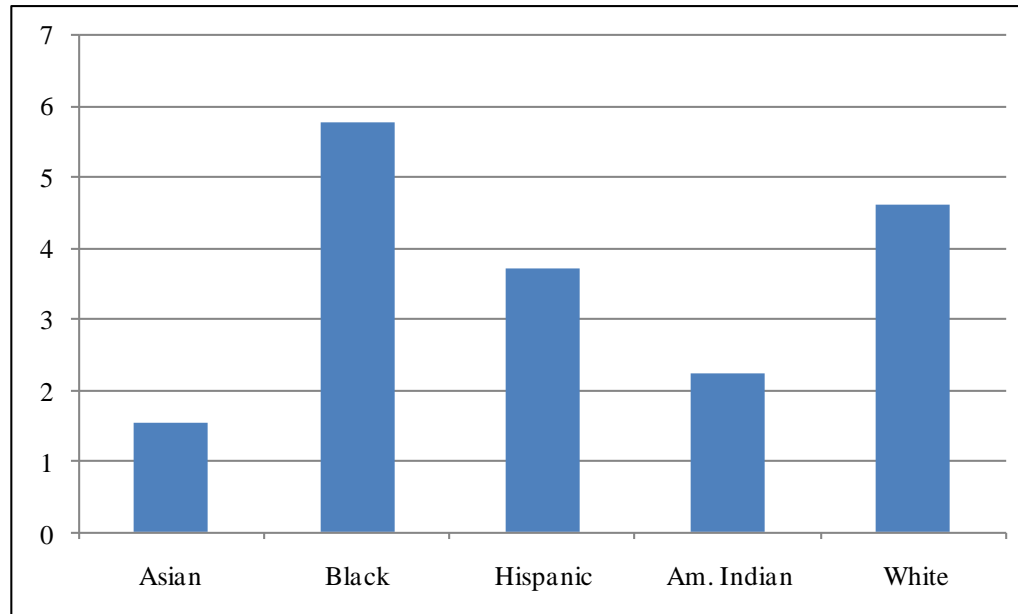


Table 18 and Figure 18: Race and Ethnicity: Respiratory Conditions

	Asian	Black	Hispanic	Am. Indian	White
ER Visits	16,286	273,373	328,973	757	279,543
Population Total	232,385	730,412	1,619,426	6,455	1,430,875
Rate/100	7.01	37.43	20.31	11.73	19.54

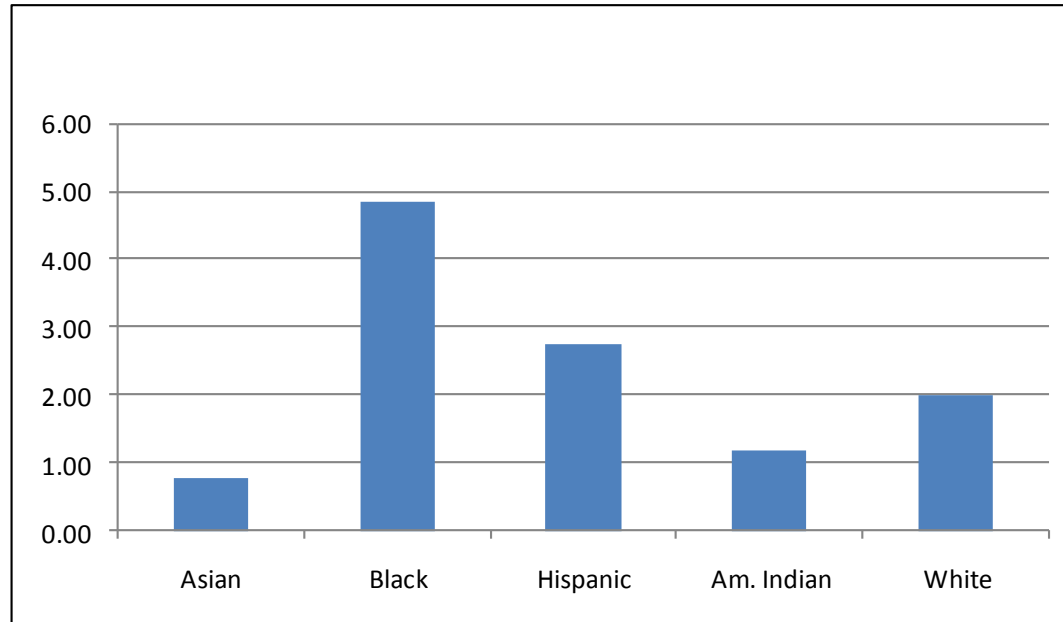


Table 19 and Figure 19: Race and Ethnicity: Mental Health as Primary Diagnosis

	Asian	Black	Hispanic	Am. Indian	White
ER Visits	197	3,483	3,153	12	5,209
Population Total	232,385	730,412	1,619,426	6,455	1,430,875
Rate/100	0.08	0.48	0.19	0.19	0.36

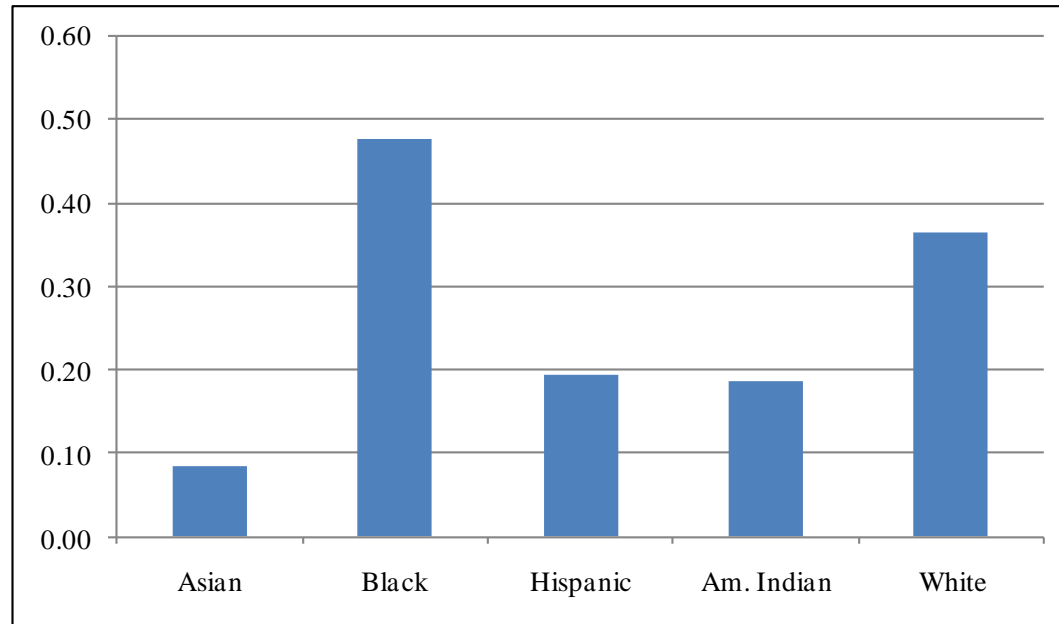


Table 20 and Figure 20: Race and Ethnicity: Alcohol as Primary Diagnosis

	Asian	Black	Hispanic	Am. Indian	White
ER Visits	52	1,010	1,424	1	2,218
Population Total	232,385	730,412	1,619,426	6,455	1,430,875
Rate/100	0.02	0.14	0.09	0.02	0.16

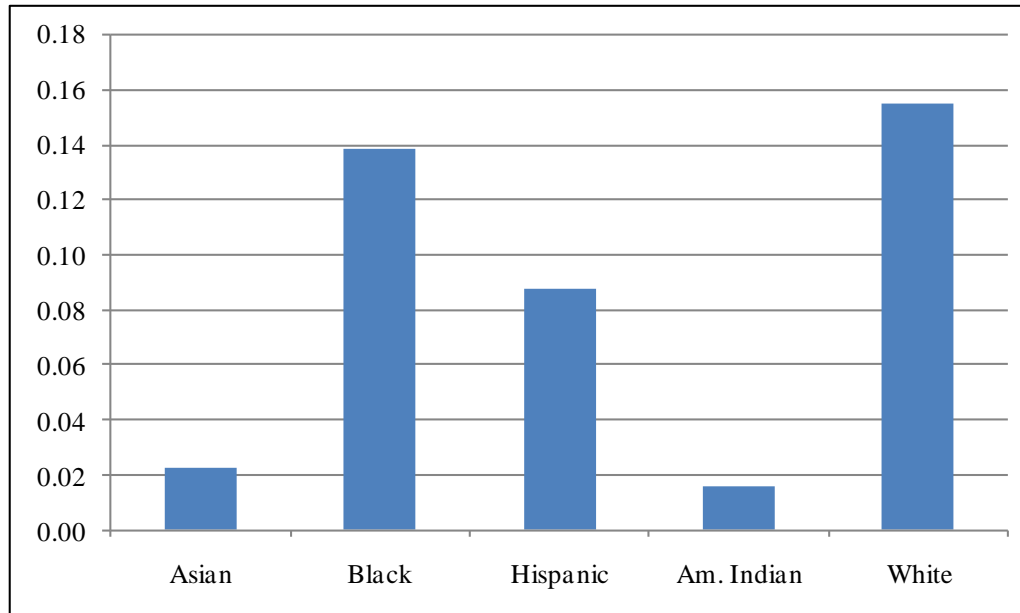


Table 21 and Figure 21: Race and Ethnicity: Drug as Primary Diagnosis

	Asian	Black	Hispanic	Am. Indian	White
ER Visits	10	317	250	1	593
Population Total	232,385	730,412	1,619,426	6,455	1,430,875
Rate/100	0.00	0.04	0.02	0.02	0.04

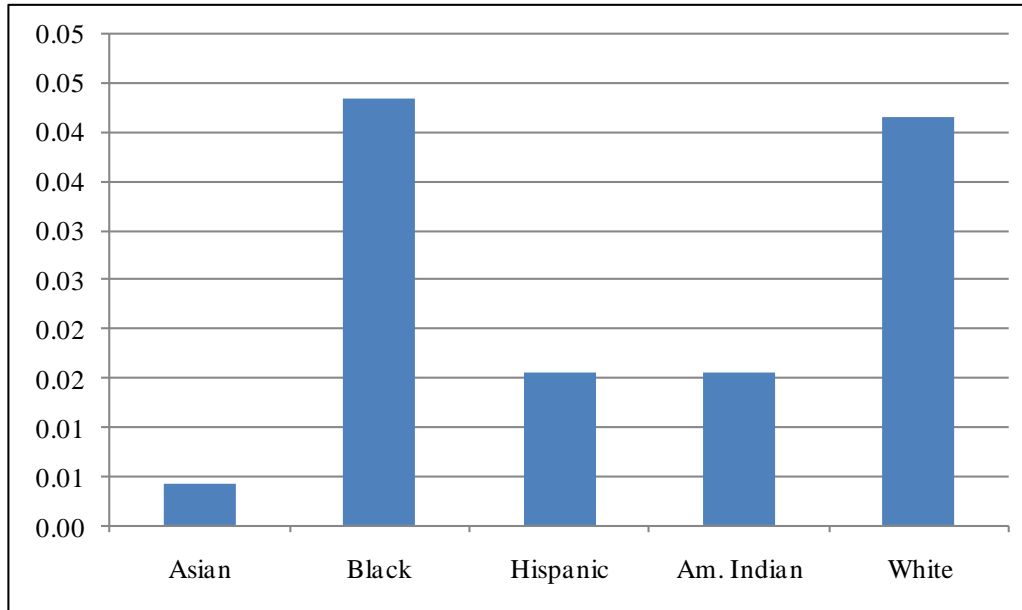


Table 22 and Figure 22: Race and Ethnicity: Simple BHED

	Asian	Black	Hispanic	Am. Indian	White
ER Visits	163	2,615	3,035	8	4,112
Population Total	232,385	730,412	1,619,426	6,455	1,430,875
Rate/100	0.07	0.36	0.19	0.12	0.29

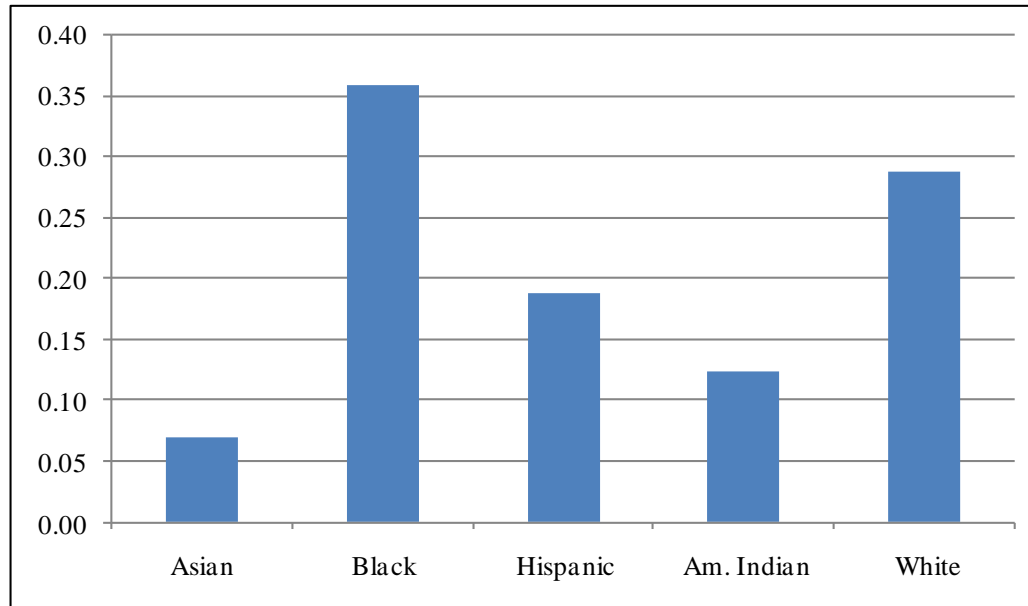


Table 23 and Figure 23: Complex BHED

	Asian	Black	Hispanic	Am. Indian	White
ER Visits	106	2,195	1,792	6	3,908
Population Total	232,385	730,412	1,619,426	6,455	1,430,875
Rate/100	0.05	0.30	0.11	0.09	0.27

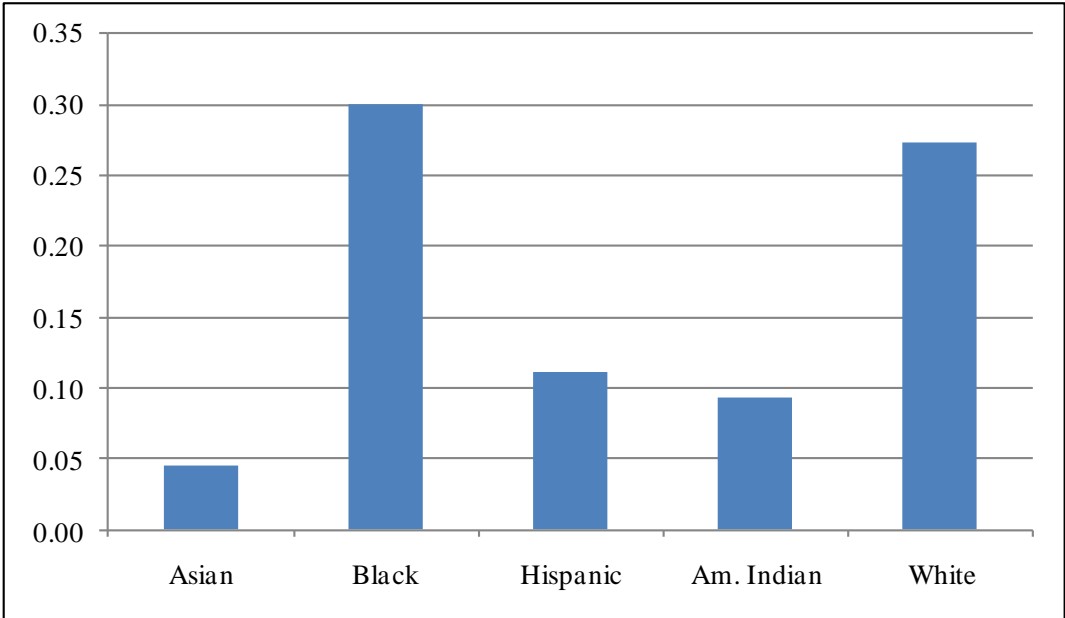


Table 24 and Figure 24: Race and Ethnicity: Medical BHED

	Asian	Black	Hispanic	Am. Indian	White
ER Visits	683	15,101	11,399	36	26,166
Population Total	232,385	730,412	1,619,426	6,455	1,430,875
Rate/100	0.29	2.07	0.70	0.56	1.83

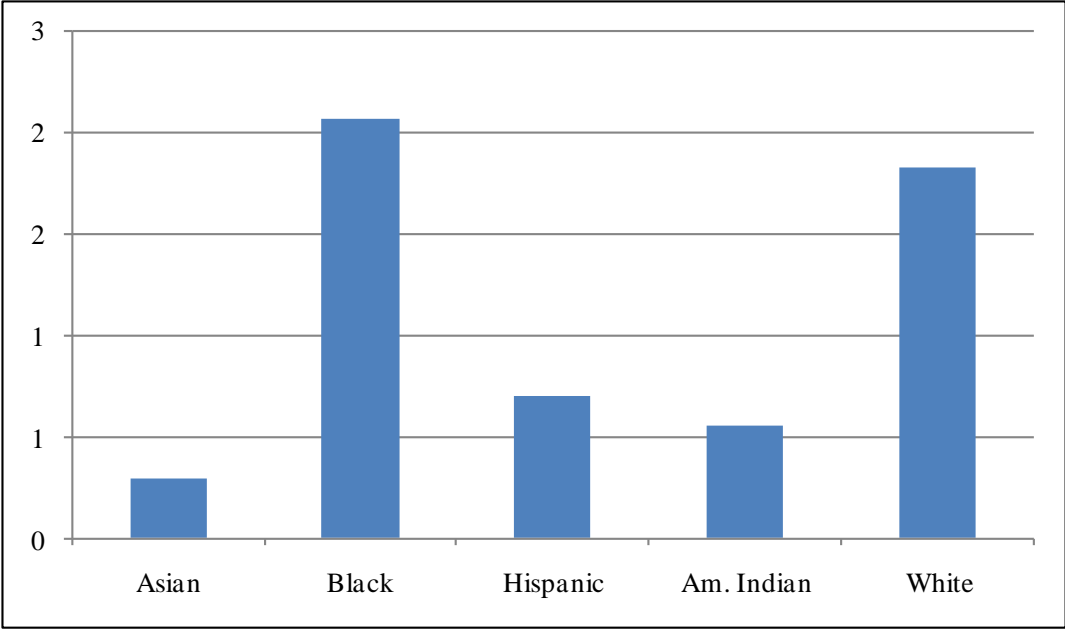


Table 25 and Figure 25: Payer Source By Age: Total Visits

ER	Under 18	18 to 34	35 to 64	65 and over
Commercial	65,157	59,138	102,658	14,705
Medicare	89	4,316	32,592	87,724
Medicaid	173,258	40,899	35,298	4,204
Uninsured	50,807	126,007	117,578	5,024
Population	Under 18	18 to 34	35 to 64	65 and over
Commercial	522,136	526,142	944,871	118,121
Medicare	9,941	6,764	20,317	125,585
Medicaid	389,625	56,922	80,922	0
Uninsured	227,268	441,524	415,436	9,007
Rate/100	Under 18	18 to 34	35 to 64	65 and over
Commercial	12.48	11.24	10.86	12.45
Medicare	0.90	63.81	160.42	69.85
Medicaid	44.47	71.85	43.62	0.00
Uninsured	22.36	28.54	28.30	55.78

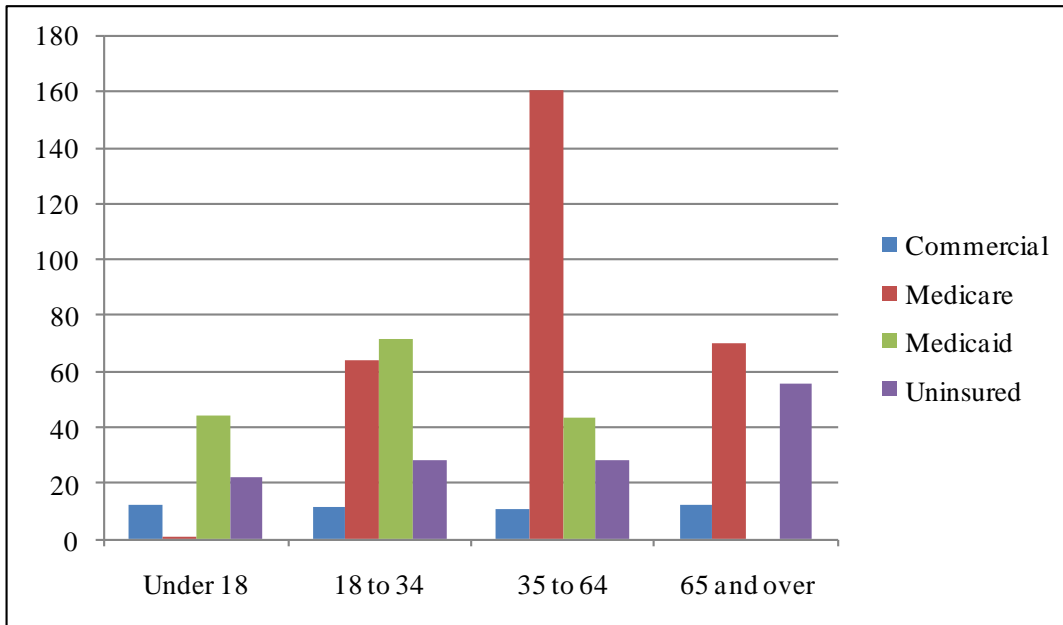


Table 26 and Figure 26: Payer Source By Age: Primary Care Related Visits

ER	Under 18	18 to 34	35 to 64	65 and over
Commercial	25,514	25,351	38,996	4,639
Medicare	27	1,607	10,732	21,904
Medicaid	88,743	18,103	13,030	1,290
Uninsured	24,221	54,995	48,439	1,779
Population	Under 18	18 to 34	35 to 64	65 and over
Commercial	522,136	526,142	944,871	118,121
Medicare	9,941	6,764	20,317	125,585
Medicaid	389,625	56,922	80,922	0
Uninsured	227,268	441,524	415,436	9,007
Rate/100	Under 18	18 to 34	35 to 64	65 and over
Commercial	4.89	4.82	4.13	3.93
Medicare	0.27	23.76	52.82	17.44
Medicaid	22.78	31.80	16.10	0.00
Uninsured	10.66	12.46	11.66	19.75

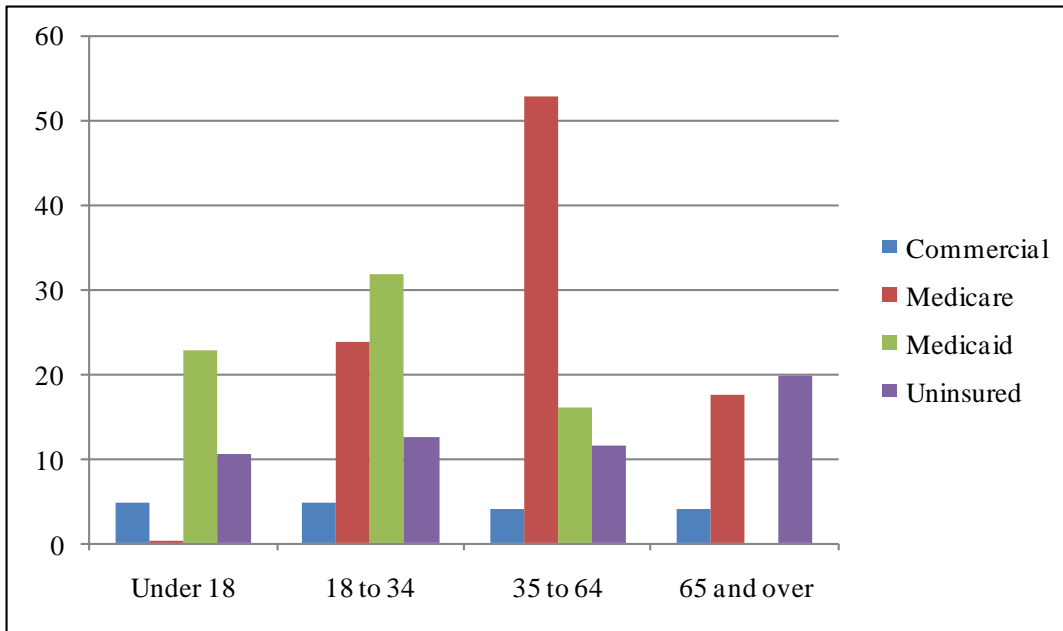


Table 27 and Figure 27: Payer Source By Age: Admitted/Hospitalized Visits

ER	Under 18	18 to 34	35 to 64	65 and over
Commercial	5,852	3,895	11,030	2,861
Medicare	25	787	8,659	30,851
Medicaid	12,795	5,976	7,910	1,275
Uninsured	6,037	16,786	20,527	1,262
Population	Under 18	18 to 34	35 to 64	65 and over
Commercial	522,136	526,142	944,871	118,121
Medicare	9,941	6,764	20,317	125,585
Medicaid	389,625	56,922	80,922	0
Uninsured	227,268	441,524	415,436	9,007
Rate/100	Under 18	18 to 34	35 to 64	65 and over
Commercial	1.12	0.74	1.17	2.42
Medicare	0.25	11.64	42.62	24.57
Medicaid	3.28	10.50	9.77	0.00
Uninsured	2.66	3.80	4.94	14.01

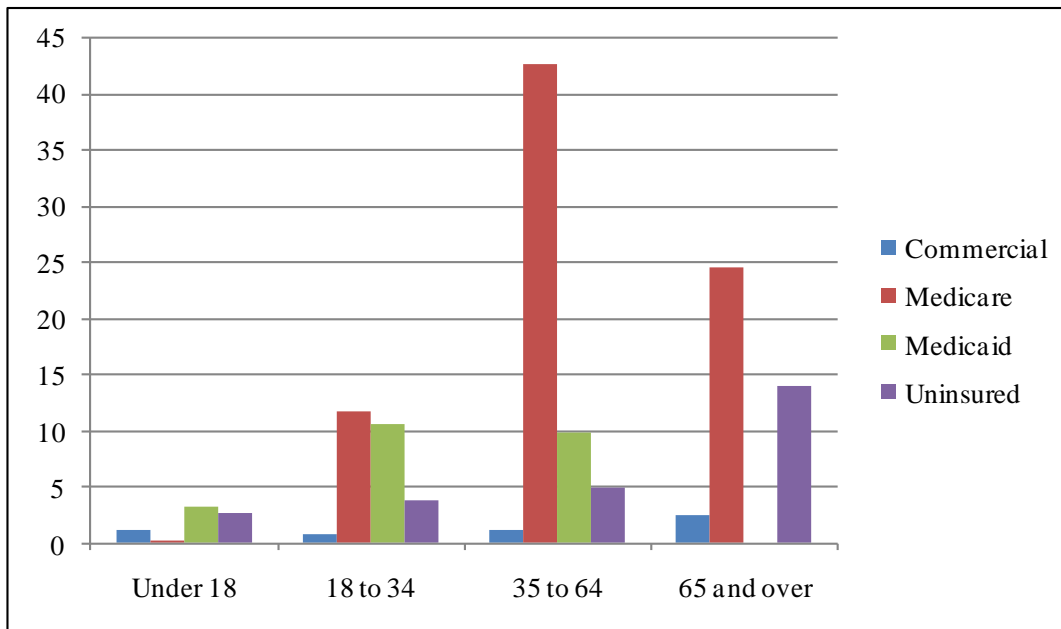


Table 28 and Figure 28: Payer Source By Age: Visits with an Ambulance Transport

ER	Under 18	18 to 34	35 to 64	65 and over
Commercial	4,873	5,778	14,221	4,924
Medicare	8	1,100	11,157	35,778
Medicaid	12,887	5,912	11,192	1,406
Uninsured	3,551	18,386	21,349	1,169
Population	Under 18	18 to 34	35 to 64	65 and over
Commercial	522,136	526,142	944,871	118,121
Medicare	9,941	6,764	20,317	125,585
Medicaid	389,625	56,922	80,922	0
Uninsured	227,268	441,524	415,436	9,007
Rate/100	Under 18	18 to 34	35 to 64	65 and over
Commercial	0.93	1.10	1.51	4.17
Medicare	0.08	16.26	54.91	28.49
Medicaid	3.31	10.39	13.83	0.00
Uninsured	1.56	4.16	5.14	12.98

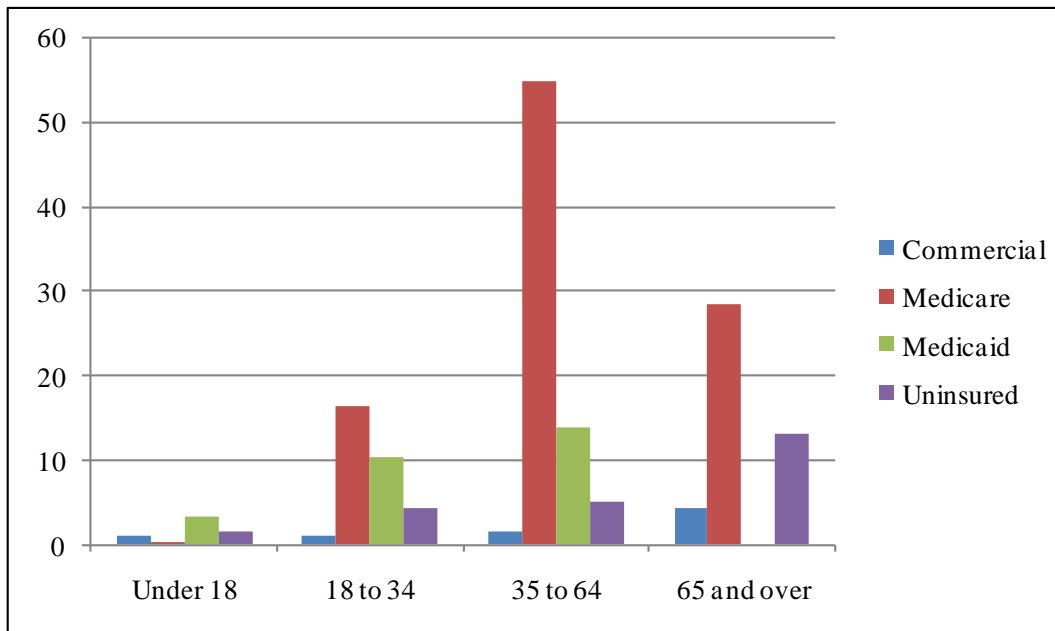


Table 29 and Figure 29: Payer Source By Age: Injuries and Poisonings

ER	Under 18	18 to 34	35 to 64	65 and over
Commercial	19,629	12,975	20,017	2,733
Medicare	22	595	4,754	14,869
Medicaid	30,101	3,766	4,107	420
Uninsured	10,353	25,349	18,044	620
Population	Under 18	18 to 34	35 to 64	65 and over
Commercial	522,136	526,142	944,871	118,121
Medicare	9,941	6,764	20,317	125,585
Medicaid	389,625	56,922	80,922	0
Uninsured	227,268	441,524	415,436	9,007
Rate/100	Under 18	18 to 34	35 to 64	65 and over
Commercial	3.76	2.47	2.12	2.31
Medicare	0.22	8.80	23.40	11.84
Medicaid	7.73	6.62	5.08	0.00
Uninsured	4.56	5.74	4.34	6.88

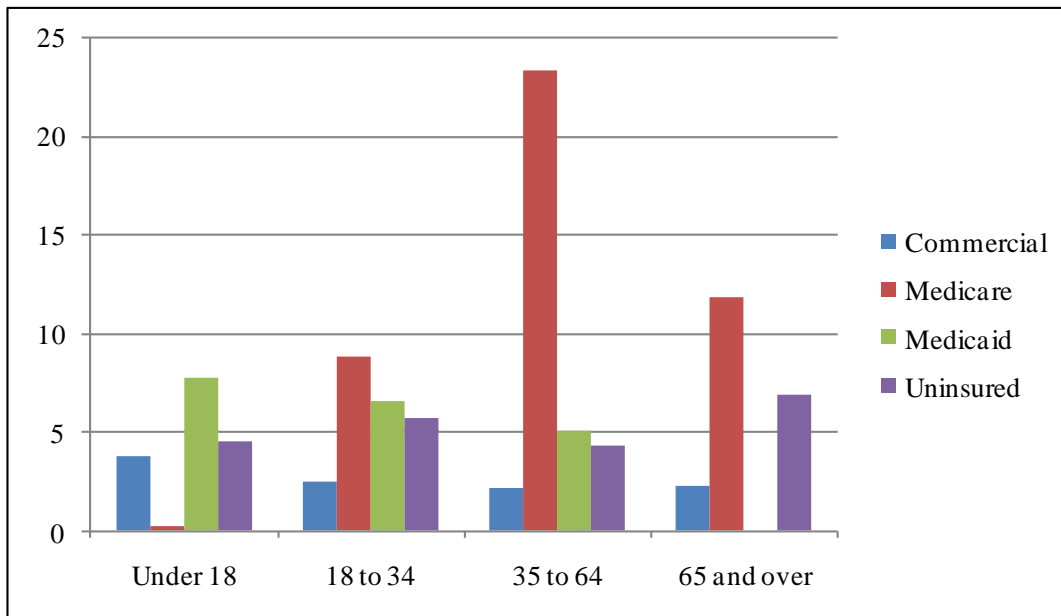


Table 30 and Figure 30: Payer Source By Age: Respiratory Conditions

ER	Under 18	18 to 34	35 to 64	65 and over
Commercial	11,580	5,006	7,618	1,294
Medicare	9	381	3,016	8,786
Medicaid	42,455	2,544	2,960	403
Uninsured	8,890	9,326	7,490	210
Population	Under 18	18 to 34	35 to 64	65 and over
Commercial	522,136	526,142	944,871	118,121
Medicare	9,941	6,764	20,317	125,585
Medicaid	389,625	56,922	80,922	0
Uninsured	227,268	441,524	415,436	9,007
Rate/100	Under 18	18 to 34	35 to 64	65 and over
Commercial	2.22	0.95	0.81	1.10
Medicare	0.09	5.63	14.84	7.00
Medicaid	10.90	4.47	3.66	0.00
Uninsured	3.91	2.11	1.80	2.33

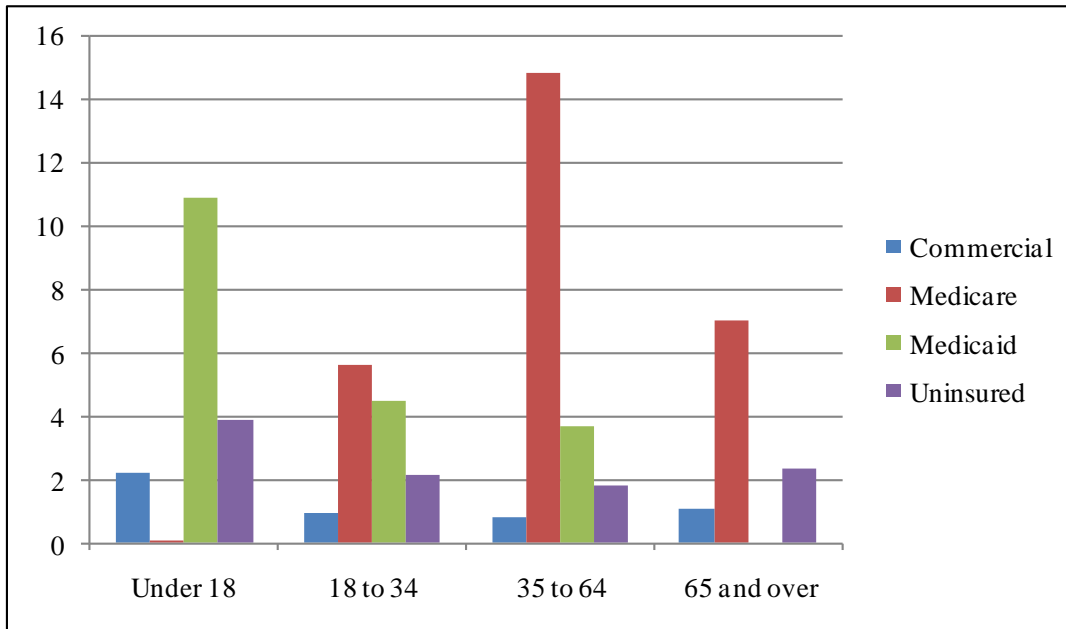


Table 31 and Figure 31: Payer Source By Age: Mental Health as Primary Diagnosis

ER	Under 18	18 to 34	35 to 64	65 and over
Commercial	470	1,119	1,407	128
Medicare	1	223	925	987
Medicaid	554	802	906	42
Uninsured	255	2,325	1,970	64
Population	Under 18	18 to 34	35 to 64	65 and over
Commercial	522,136	526,142	944,871	118,121
Medicare	9,941	6,764	20,317	125,585
Medicaid	389,625	56,922	80,922	0
Uninsured	227,268	441,524	415,436	9,007
Rate/100	Under 18	18 to 34	35 to 64	65 and over
Commercial	0.09	0.21	0.15	0.11
Medicare	0.01	3.30	4.55	0.79
Medicaid	0.14	1.41	1.12	0.00
Uninsured	0.11	0.53	0.47	0.71

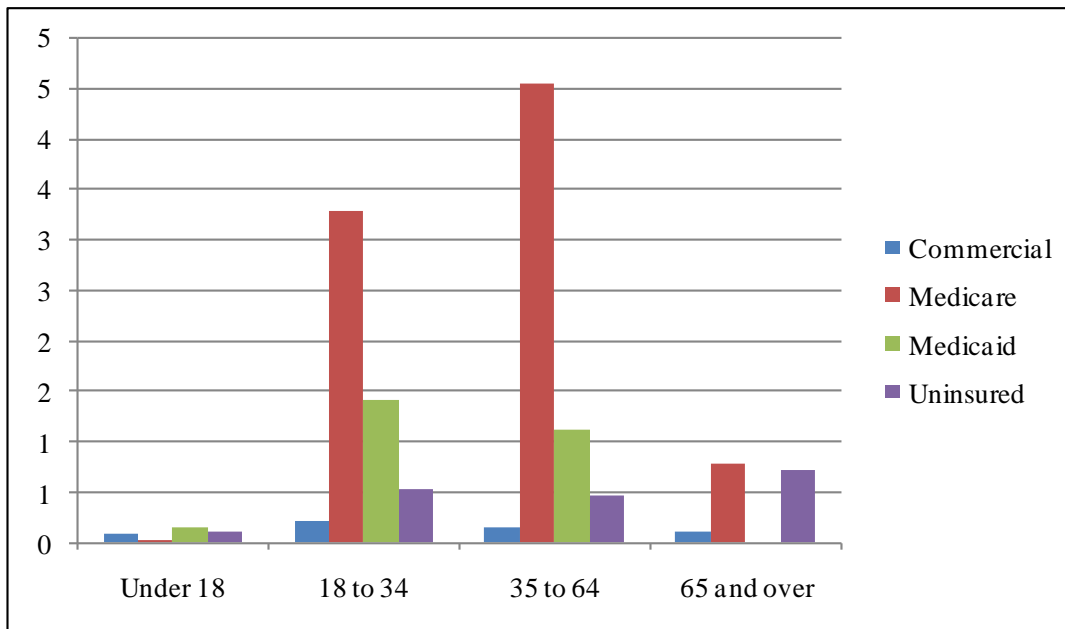


Table 32 and Figure 32: Payer Source By Age: Alcohol as Primary Diagnosis

ER	Under 18	18 to 34	35 to 64	65 and over
Commercial	56	270	513	41
Medicare	0	23	267	141
Medicaid	77	88	419	12
Uninsured	52	1,136	1,583	30
Population	Under 18	18 to 34	35 to 64	65 and over
Commercial	522,136	526,142	944,871	118,121
Medicare	9,941	6,764	20,317	125,585
Medicaid	389,625	56,922	80,922	0
Uninsured	227,268	441,524	415,436	9,007
Rate/100	Under 18	18 to 34	35 to 64	65 and over
Commercial	0.01	0.05	0.05	0.03
Medicare	0.00	0.34	1.31	0.11
Medicaid	0.02	0.15	0.52	0.00
Uninsured	0.02	0.26	0.38	0.33

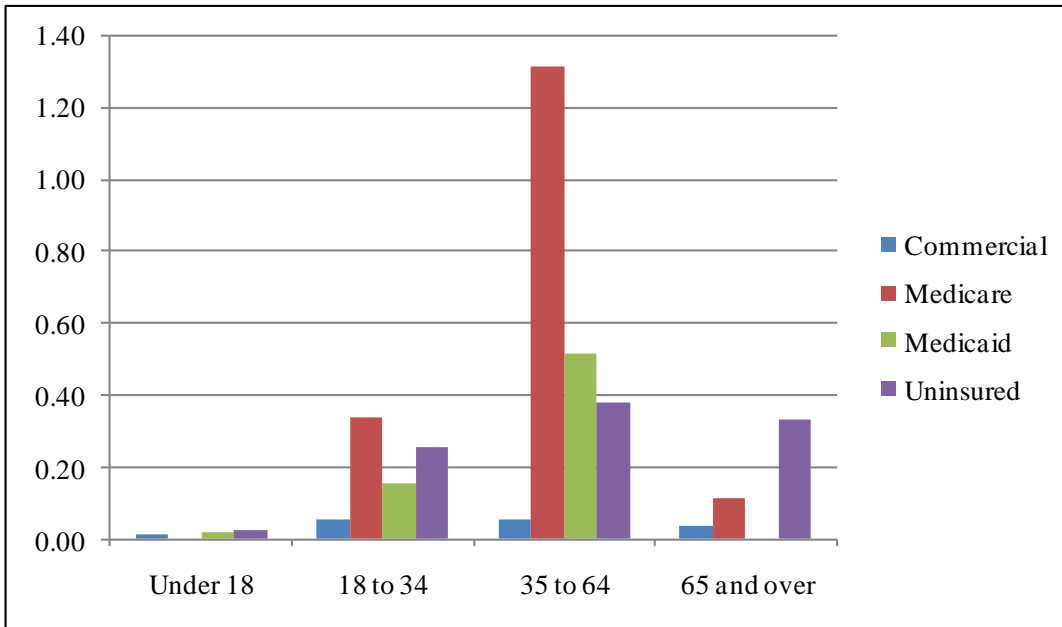


Table 33 and Figure 33: Payer Source By Age: Drug as Primary Diagnosis

ER	Under 18	18 to 34	35 to 64	65 and over
Commercial	26	79	134	9
Medicare	0	14	66	53
Medicaid	47	82	76	1
Uninsured	28	334	228	1
Population	Under 18	18 to 34	35 to 64	65 and over
Commercial	522,136	526,142	944,871	118,121
Medicare	9,941	6,764	20,317	125,585
Medicaid	389,625	56,922	80,922	0
Uninsured	227,268	441,524	415,436	9,007
Rate/100	Under 18	18 to 34	35 to 64	65 and over
Commercial	0.00	0.02	0.01	0.01
Medicare	0.00	0.21	0.32	0.04
Medicaid	0.01	0.14	0.09	0.00
Uninsured	0.01	0.08	0.05	0.01

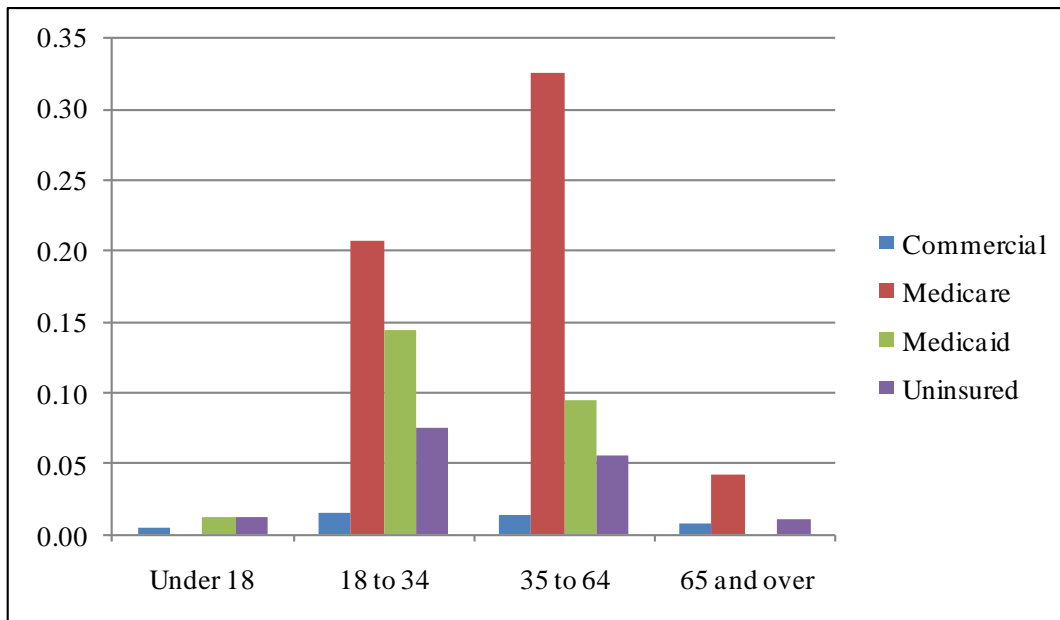


Table 34 and Figure 34: Payer Source By Age: Simple BHED

ER	Under 18	18 to 34	35 to 64	65 and over
Commercial	392	896	1,237	131
Medicare	0	104	614	715
Medicaid	435	439	677	44
Uninsured	227	2,107	1,943	67
Population	Under 18	18 to 34	35 to 64	65 and over
Commercial	522,136	526,142	944,871	118,121
Medicare	9,941	6,764	20,317	125,585
Medicaid	389,625	56,922	80,922	0
Uninsured	227,268	441,524	415,436	9,007
Rate/100	Under 18	18 to 34	35 to 64	65 and over
Commercial	0.08	0.17	0.13	0.11
Medicare	0.00	1.54	3.02	0.57
Medicaid	0.11	0.77	0.84	0.00
Uninsured	0.10	0.48	0.47	0.74

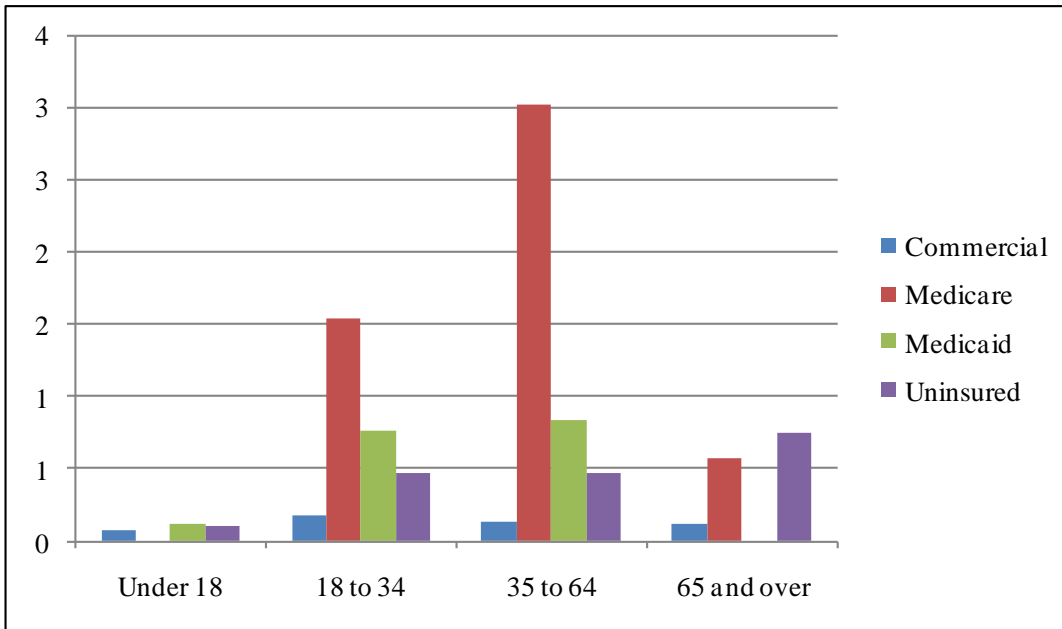


Table 35 and Figure 35: Payer Source By Age: Complex BHED

ER	Under 18	18 to 34	35 to 64	65 and over
Commercial	160	572	817	47
Medicare	1	156	644	466
Medicaid	243	533	724	11
Uninsured	108	1,688	1,838	28
Population	Under 18	18 to 34	35 to 64	65 and over
Commercial	522,136	526,142	944,871	118,121
Medicare	9,941	6,764	20,317	125,585
Medicaid	389,625	56,922	80,922	0
Uninsured	227,268	441,524	415,436	9,007
Rate/100	Under 18	18 to 34	35 to 64	65 and over
Commercial	0.03	0.11	0.09	0.04
Medicare	0.01	2.31	3.17	0.37
Medicaid	0.06	0.94	0.89	0.00
Uninsured	0.05	0.38	0.44	0.31

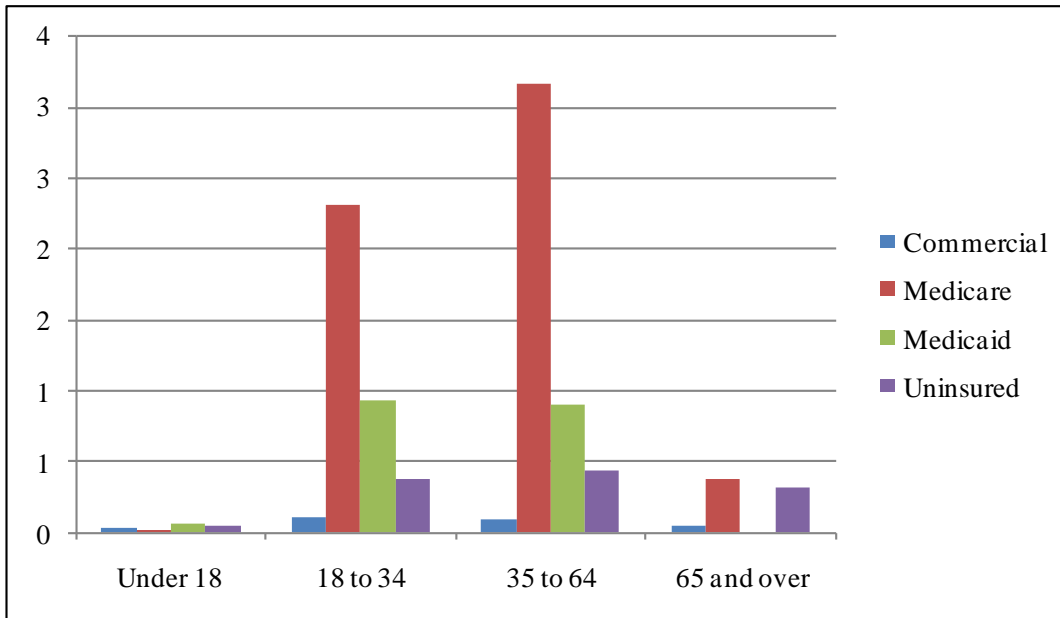


Table 36 and Figure 36: Payer Source By Age: Medical BHED

ER	Under 18	18 to 34	35 to 64	65 and over
Commercial	1,224	2,784	6,604	1,141
Medicare	6	613	4,641	12,380
Medicaid	2,077	2,236	4,932	342
Uninsured	411	5,870	8,073	216
Population	Under 18	18 to 34	35 to 64	65 and over
Commercial	522,136	526,142	944,871	118,121
Medicare	9,941	6,764	20,317	125,585
Medicaid	389,625	56,922	80,922	0
Uninsured	227,268	441,524	415,436	9,007
Rate/100	Under 18	18 to 34	35 to 64	65 and over
Commercial	0.23	0.53	0.70	0.97
Medicare	0.06	9.06	22.84	9.86
Medicaid	0.53	3.93	6.09	0.00
Uninsured	0.18	1.33	1.94	2.40

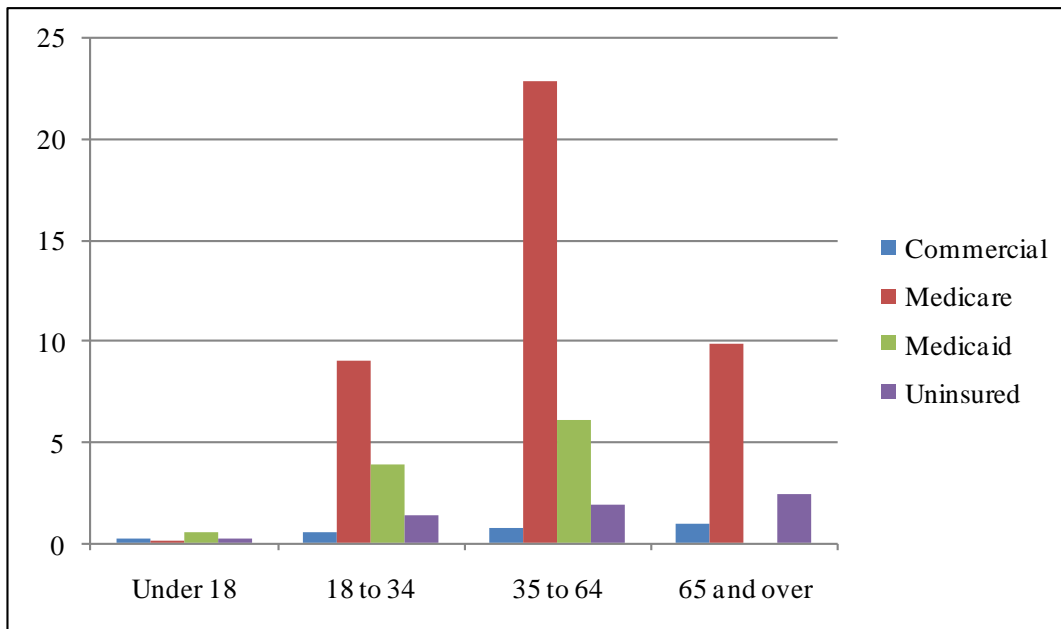


Table 37 and Figure 37: Race and Ethnicity: Total and primary care related visits by the uninsured – age 17 and under

	Asian	Black	Hispanic	Am. Indian	White
Total ED	476	13,125	26,495	33	7,675
PCR ED	193	6,655	13,003	15	2,966
Population	14,316	29,298	154,660	1,394	143,189
Total Rate	3.32	44.80	17.13	2.37	5.36
PCR Rate	1.35	22.72	8.41	1.11	2.07

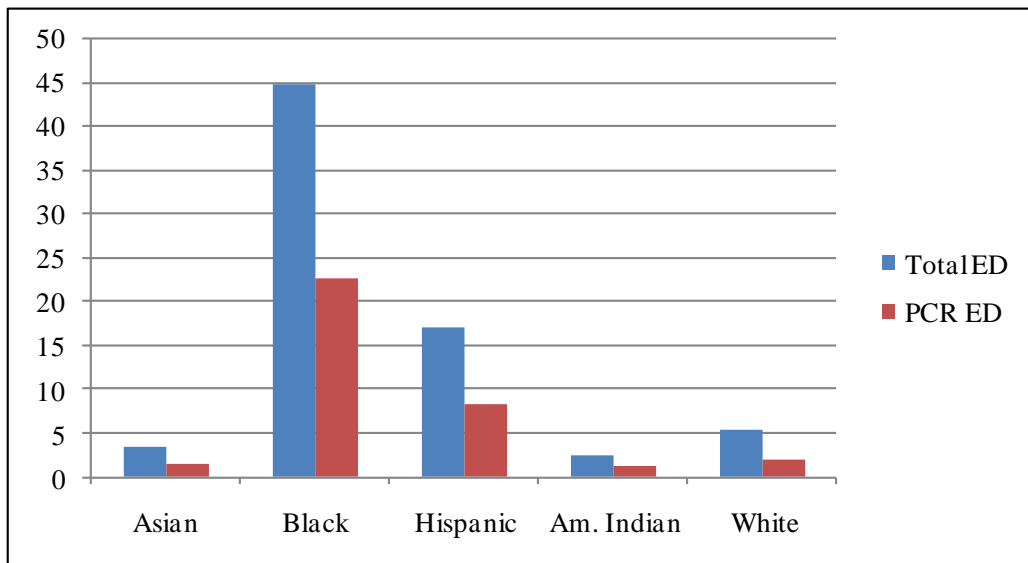


Table 38 and Figure 38: Race and Ethnicity: Total and primary care related visits by the uninsured – age 18 to 34

	Asian	Black	Hispanic	Am. Indian	White
Total ED	1,161	42,909	49,331	86	27,827
PCR ED	434	20,661	20,852	41	10,934
Population	434	20,661	20,852	41	10,934
Total Rate	6.42	59.86	17.28	2.84	10.28
PCR Rate	2.40	28.82	7.31	1.36	4.04

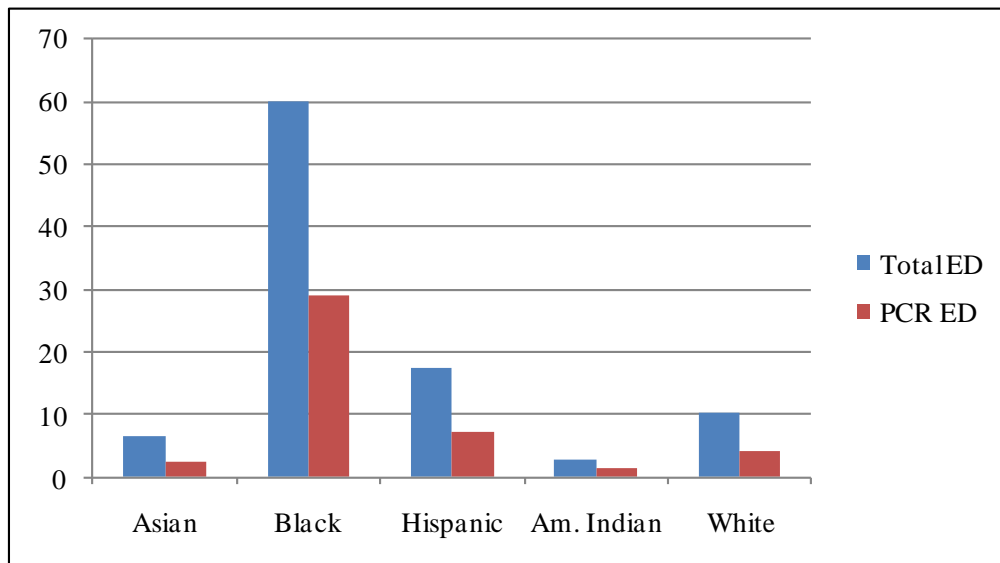


Table 39 and Figure 39: Race and Ethnicity: Total and primary care related visits by the uninsured – age 35 to 64

	Asian	Black	Hispanic	Am. Indian	White
Total ED	2,333	40,003	42,496	136	28,884
PCR ED	842	17,998	17,895	59	10,167
Population	26,097	63,716	243,956	2,659	260,015
Total Rate	8.94	62.78	17.42	5.11	11.11
PCR Rate	3.23	28.25	7.34	2.20	3.91

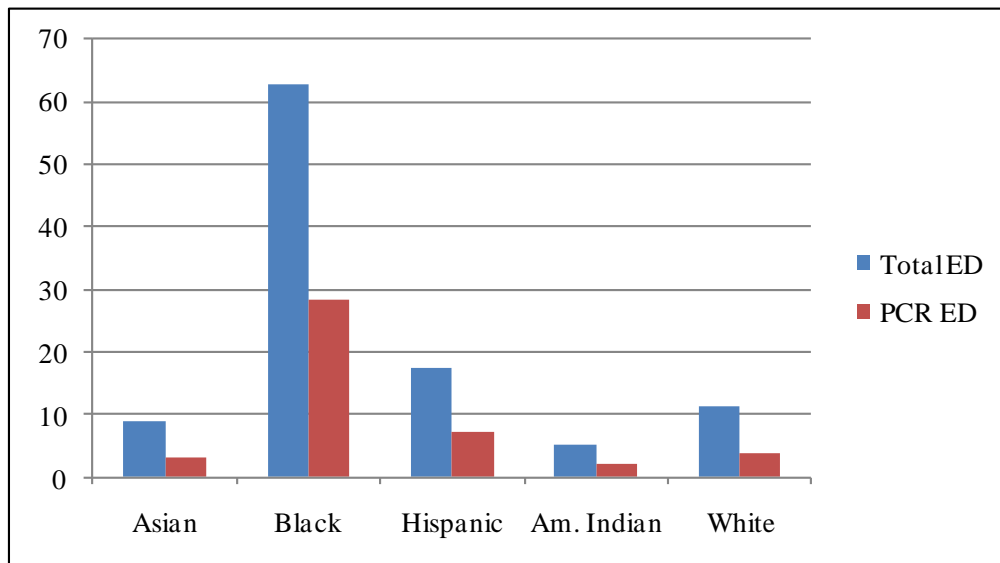


Table 40 and Figure 40: Race and Ethnicity: Total and primary care related visits by the uninsured – age 65 and over

	Asian	Black	Hispanic	Am. Indian	White
Total ED	296	908	2,519	16	974
PCR ED	117	323	1,042	6	203
Population	664	976	6,254	174	5,893
Total Rate	44.58	93.03	40.28	9.20	16.53
PCR Rate	17.58	33.08	16.66	3.61	3.45

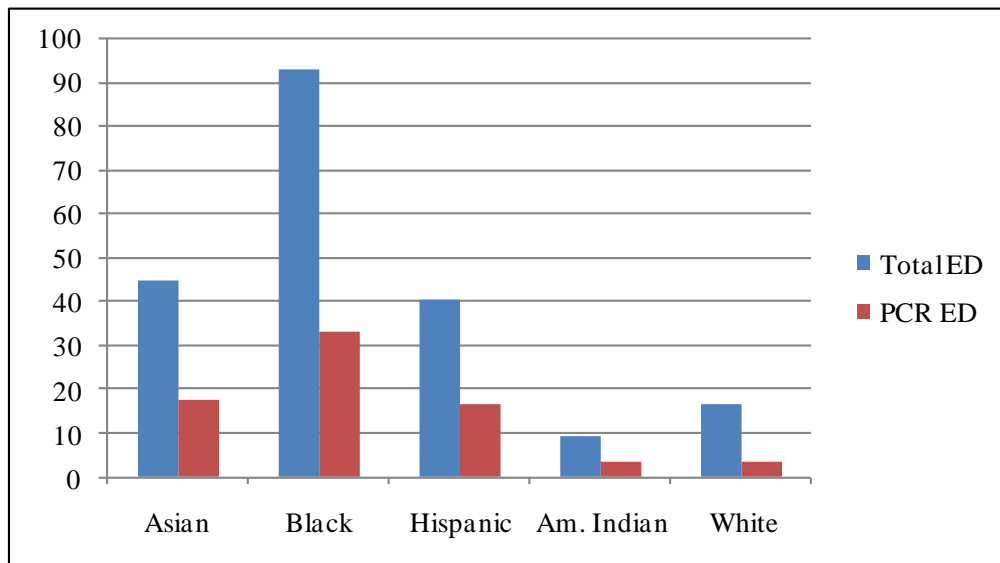


Table 41: Single highest rate for each of those groups

	Sex by Age	Race/Ethnicity	Payer Source by Age
Total	Female 80 & over	Black	Medicare 35 - 64
PCR	Male 4 & younger	Black	Medicare 35 - 64
Admitted	Female 80 & over	Black	Medicare 35 - 64
Ambulance	Female 80 & over	Black	Medicare 35 - 64
Injuries/Poisonings	Female 80 & over	Black	Medicare 35 - 64
Respiratory	Male 4 & younger	Black	Medicare 35 - 64
Mental Health	Female 80 & over	Black	Medicare 35 - 64
Alcohol	Male 40 - 49	White	Medicare 35 - 64
Drug	Male 18 - 21	Black and White (tie)	Medicare 35 - 64
Simple BHED	Female 18 - 21	Black	Medicare 35 - 64
Complex BHED	Male 40 - 49	Black	Medicare 35 - 64
Medical BHED	Female 80 & over	Black	Medicare 35 - 64