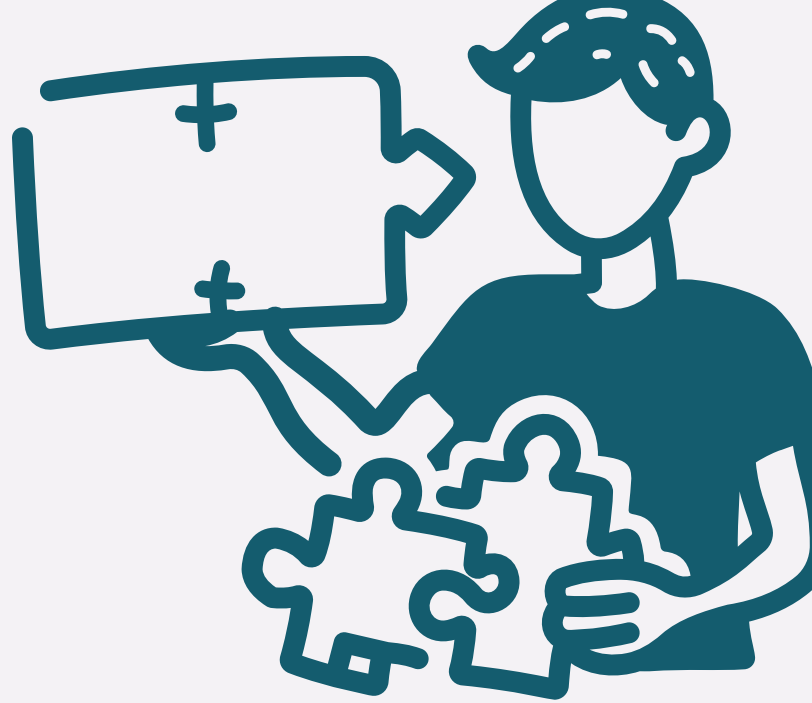


Expansion and Evaluation of Level II and III Recovery Residences for People Taking Medications for an Opioid Use Disorder: Project HOMES Study Protocol



In 2021, over 84,100 people in the U.S. died from an opioid-related overdose.

RECOVERY HOMES AND OPIOID USE

Recovery homes are safe, sober living places for people in recovery from substance use.

But how can recovery homes help people taking medications for opioid use disorder (MOUD)?

WHAT IS PROJECT HOMES?

Project HOMES is an ongoing study on Housing for MAR Expanded Services (HOMES). We've opened 15 recovery homes across Texas for people taking MOUD.

Our Goals:

EXPAND access to recovery homes that accept people taking MOUD

EVALUATE how recovery homes support people taking MOUD

COMPARE how cost effective MOUD treatment for people in recovery homes to people in the community.

WHAT DID WE DO?

We interviewed 92 people living in one of Project Homes' 14 recovery residences across Texas to learn about the experiences of those with both mental health and substance use issues.

Reference:

Wilkerson JM, Gallardo KR, Rodriguez S, et al. Expansion and evaluation of level II and III recovery residences for people taking medications for an opioid use disorder: project HOMES (Housing for MAR Expanded Services) study protocol. *BMJ Open*. 2024;14(11):e084115. Published 2024 Nov 4. doi:10.1136/bmjopen-2024-084115

HOW DOES IT WORK?

We collect data from recovery home residents, house managers, and local communities.

- Individual
 - Surveys
 - Healthcare use
 - Breathalyzer and urinalysis
- Interpersonal
 - Interviews with home staff and residents
- Organizational
 - Field observation
 - Cost-effectiveness
- Community
 - Neighborhood mapping

WHY PROJECT HOMES MATTERS

- Project HOMES is the first large study on Level II and III recovery homes for people taking MOUD. What we learn will help guide recovery support services:
- Best-Practices | How to structure and manage recovery homes for MOUD.
- Policy-Makers | Funding and policy decisions to support recovery homes.
- Researchers | How to evaluate recovery housing using the socio-ecological model.

Project HOMES:

