

# 2020

## ANNUAL REPORT



**Center for Pediatric Population Health**

  
**UTHealth**<sup>®</sup>  
The University of Texas  
Health Science Center at Houston  
School of Public Health

children'shealth<sup>®</sup> 





# Table of Contents

Mission and Vision .....	2
Director’s Introduction .....	4
What is Population Health? .....	8
Social Media and Impact.....	10
Membership.....	14
Faculty .....	18
Fellows .....	26
Staff.....	28
Organizational Chart .....	34
Databases and Data Repositories .....	36
Scientific Collaborations .....	40
Publications.....	48
Research Funding and Support.....	62
Additional Activities .....	66
Plans for Growth and Future Goals.....	74



# Mission and Vision



## MISSION

---

The purpose of the Center for Pediatric Population Health is to support multidisciplinary research teams to conduct studies and programs in collaboration with health care providers and community organizations to improve the health of child and adolescent populations. In addition, the Center will serve as a resource to translate scientific findings and knowledge into practical applications for public health practice, health care services, and health policies.



## VISION

---

The Center for Pediatric Population Health, a collaboration between UTHealth School of Public Health and Children’s Health System of Texas, will improve the health for children and adolescent populations through evidence-based research to inform programs for health promotion, disease prevention, and health care, all while addressing health disparities.



## VALUES

---

- Collaborate
- Lead
- Transform
- Diversify



# Director's Introduction





Founded in 2018, the Center for Pediatric Population Health is a unique collaboration between UTHealth School of Public Health and Children’s Health System of Texas. While the Center is physically located in Dallas, it has the capacity for regional and statewide reach through this unique collaboration between the largest pediatric health care system in North Texas and one of the largest schools of public health in the nation, with campuses not only in Dallas but also in Houston, Austin, San Antonio, Brownsville, and El Paso. It is worth noting the rapid demographic transition currently taking place in the state of Texas, which now has two of the most diverse metro areas in the entire nation; Houston is ranked first and Dallas fifth. As such, there has never been a greater time or opportunity to serve our Texas pediatric populations and aspire to health without boundaries for all.

The Center’s mission is to support multidisciplinary research teams to conduct studies and programs in collaboration with health care providers and community organizations to improve the health of child and adolescent populations. In addition, the Center will serve as a resource to translate scientific findings and knowledge into practical applications for public health practice, health care services, and health policies.

## **STRATEGY**

To accomplish our mission, our overall strategy is built on a foundation of four value pillars shared with UTHealth School of Public Health:

1. **Collaborate** and foster partnerships and transdisciplinary research in clinical and community-based settings
2. **Lead** research discovery to generate evidence-based science and recommendations for clinical practice and community-based programming
3. **Transform** through education, training, and mentoring to improve pediatric population health and instill a culture of health for all families
4. **Diversify** our research portfolio with a nimble approach to meet immediate scientific challenges in the field

For the Center to meet successful milestones in the short-, mid-, and long-term, a culture of collaboration, collegiality, and synergy built on our four-value pillars is essential. Stewarding a commitment to children and family-driven population health by illustrating our mission through various channels such as Children’s Health and UTHealth webpages, the community, social media platforms, earned media, and traditional publications are a priority. These various platforms emphasize our strengths and beneficial influence in Dallas, in Texas, nationally, and internationally by highlighting successful research programs, graduate training programs, clinical offerings, and our contribution to the community by measuring our impact on pediatric health outcomes.

The Center’s second year has been inspiring and challenging given the current COVID-19 pandemic. However, driven by the groundswell of local interest in pediatric population health the Center has been active in answering many pediatric-focused research questions about this menacing virus. The Center currently includes senior, mid-career, and junior faculty members, a database/IT manager, one international postdoctoral fellow, two research coordinators, four PhD student trainees, one graduate

assistant, and one administrative assistant. This team's work has been presented in international arenas (Oxford University), national conferences (American Public Health Association, American Academy of Pediatrics, The Obesity Society, American College of Epidemiology, and American College of Surgeons) and state forums (multiple presentation acceptances at the Texas Public Health Association's annual meeting). We have published over 50 articles in the scientific literature in top tier journals (JAMA, American Journal of Preventive Medicine, American Journal of Public Health, Annals of Surgery, American Journal of Sports Medicine, and Obesity Reviews), with several receiving worldwide media attention.

In terms of successful federal research funding, the Center has active NIH R01, K01, and F31 awards. Additionally, we have several NIH grants under review: one Center for Clinical and Translational Award subcontract (\$1.1 million), two R01s (\$5 million in direct costs), two R21s (\$550,000 in direct costs), and one R03 (\$130,000 in direct costs). All of these tangible outcomes are a result of successful collaborations with dozens of clinical, community, and public health partners throughout the metroplex and beyond. We are also partnering with our local representatives to ensure pediatric health causes remain a focus of the 2021 legislative session.

Finally, we graduated our first student lab cohort this summer. We had a total of 11 students who have published research in top tier journals, had platform presentations accepted at leading national and statewide meetings, and won numerous awards for their work. We are extremely proud of them and we look forward to seeing their impact in the community with their newly minted degrees.

In closing and as director, my core mission is to create a Center culture in which members are supportive of everyone's success, and compassionate, even in challenging times. The Center welcomes change because what is constant is the climate, yet we are strategic, self-reflective, and visionary. If these core values are embraced, regardless of stage of Center development, success is imminent.

Yours in Health,

A handwritten signature in black ink, appearing to read "Sarah E. Messiah". The signature is fluid and cursive, with a large initial "S" and "M".

Sarah E. Messiah, PhD, MPH





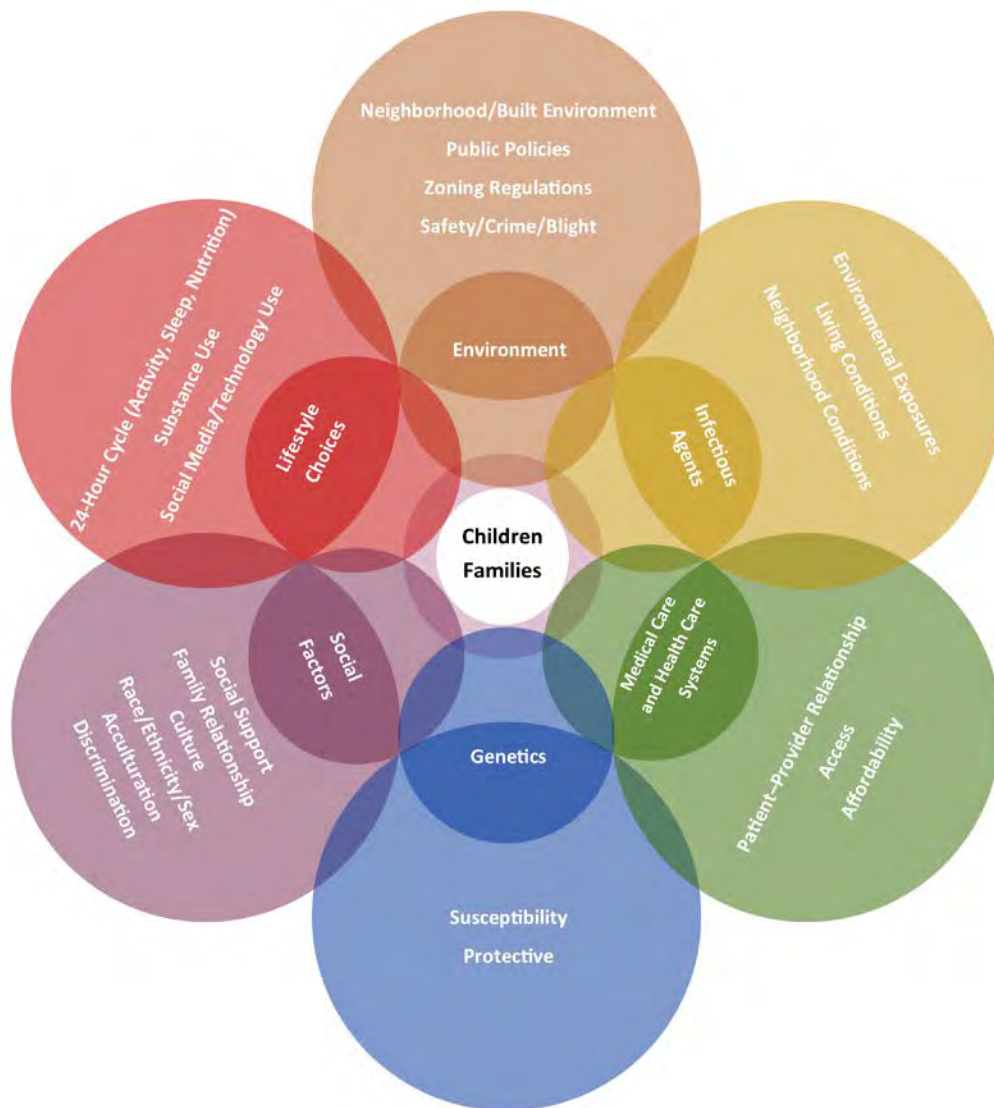


# What is Population Health?



## Population Health

Population health is the study of relationships among various health determinants and/or health outcomes in large populations. Population health is positioned at the intersection of medicine/health care and public health, and includes the basic, clinical, social, environmental, and genetic sciences, enabling integrated and transdisciplinary research. As such, the Center for Pediatric Population Health is home to experts in a number of relevant disciplines including: epidemiology, exercise physiology, nutrition, behavioral health, biostatistics, business, community health, environmental science, economics, community health, genetics, education, implementation science, preventive medicine, anthropology, sociology, and psychology.





# Social Media and Impact



## Social Media

Through social media the Center actively engages the general public, provides information on trending population and public health issues, and disseminates research findings. The Center is active on the following social media platforms:

SOCIAL MEDIA	LINK
<b>Center for Pediatric Population Health Website</b>	<a href="https://sph.uth.edu/research/centers/cpph">https://sph.uth.edu/research/centers/cpph</a>
<b>Twitter</b>	<a href="https://twitter.com/cpphtx">https://twitter.com/cpphtx</a>
<b>Instagram</b>	<a href="https://www.instagram.com/cpphtx">https://www.instagram.com/cpphtx</a>
<b>Facebook</b>	<a href="https://www.facebook.com/cpphtexas">https://www.facebook.com/cpphtexas</a>
<b>LinkedIn</b>	<a href="https://www.linkedin.com/company/cpphtx">https://www.linkedin.com/company/cpphtx</a>

## In the News

The Center has been quite busy this past year. Research generated from the Center has been featured in local and national news. A few of these highlights are listed below:

TITLE	LINK
<p><b>Impact of COVID-19 Stay-at-Home Orders on Weight-Related Behaviors Among Patients with Obesity (Clinical Obesity June 9, 2020)</b></p> <ul style="list-style-type: none"> <li>• <b>Ranked #2 overall for journal; 98<sup>th</sup> percentile Altmetric score</b></li> <li>• <b>Highlighted in over 42 news articles across 36 outlets</b></li> </ul>	<p><a href="https://onlinelibrary.wiley.com/doi/full/10.1111/cob.12386">https://onlinelibrary.wiley.com/doi/full/10.1111/cob.12386</a></p>

TITLE	LINK
<b>Concussions are associated with cognitive, behavioral, and emotional health consequences for student athletes (Newswise July 22, 2020)</b>	<a href="https://www.newswise.com/articles/concussions-are-associated-with-cognitive-behavioral-and-emotional-health-consequences-for-student-athletes">https://www.newswise.com/articles/concussions-are-associated-with-cognitive-behavioral-and-emotional-health-consequences-for-student-athletes</a>
<b>Children With Developmental Disabilities More Likely To Develop Asthma (Science Magazine June 16, 2020)</b>	<a href="https://scienmag.com/children-with-developmental-disabilities-more-likely-to-develop-asthma">https://scienmag.com/children-with-developmental-disabilities-more-likely-to-develop-asthma</a>
<b>Lockdowns making things worse for obese Americans (USNews June 15, 2020)</b>	<a href="https://www.usnews.com/news/health-news/articles/2020-06-15/lockdowns-making-things-worse-for-obese-americans-study">https://www.usnews.com/news/health-news/articles/2020-06-15/lockdowns-making-things-worse-for-obese-americans-study</a>
<b>Mental, physical health of people with obesity affected during COVID-19 pandemic (UTHealth News June 10, 2020)</b>	<a href="https://www.uth.edu/news/story.htm?id=df1ec253-5706-475c-85b9-887bd88942ef">https://www.uth.edu/news/story.htm?id=df1ec253-5706-475c-85b9-887bd88942ef</a>
<b>Fit2Play Case Study (City Parks Alliance January 17, 2020)</b>	<a href="https://cityparksalliance.org/resource/fit2play">https://cityparksalliance.org/resource/fit2play</a>







# Membership



## Summary

Dallas has one of the largest patient databases and health care-focused workforces in the country, spread across Children’s Health System of Texas, The University of Texas Southwestern Medical Center, and numerous other institutions and specialty clinics. At the same time, UTHealth School of Public Health has a large number of researchers, epidemiologists, and statisticians focused on addressing complex population health issues. The Center for Pediatric Population Health is a bridge to facilitate collaborations between these entities by utilizing a no-cost membership model. Interested faculty may submit membership applications through the Center website and access resources:

- Eligibility for subsidized use and priority access of Center resources
- Eligibility for access to Center datasets
- Eligibility to receive free guidance from Center subject matter experts
- Eligibility to apply for Center pilot funds
- Opportunities for cross-collaboration with other members and affiliated institutions
- Facilitation in connecting graduate students seeking mentorship and real-world, hands-on experience with members needing assistance with research projects
- Information on Center events and seminar announcements
- Customized notifications of funding (federal, state, and local) opportunities based on members’ research interests
- Inclusion on Center website
- Annual report on members’ research and Center involvement

The Center aims to promote and facilitate collaborations among its members so that together, groundbreaking research may be done that can have local, national, and global impacts on pediatric population health.

## Resources

The Center provides a variety of resources to support the research community in its mission of fostering a culture of data-driven, innovative, progressive strategic approaches to population-level pediatric research. These include guidance and support in the following areas:

- Grant application or study protocol development
- Study design
- Sample size and power calculations
- Analysis methods
- Randomization
- Case report form design
- Data management
- Database development and administration
- Survey development and collection



- Data analysis and interpretation
- Presentation and manuscript preparation

### **SUBSIDIZED/PRIORITY ACCESS**

Members may be eligible for subsidized and/or priority access to Center resources, depending on personnel availability and complexity of the research.

### **DATA REPOSITORIES**

The Center has access to numerous data repositories from electronic health records (EHR), geographic information systems, and other sources. Members are eligible to access these datasets for their research study needs. A written study protocol with Institutional Review Board (IRB) approval to conduct research is required. Additional requirements may be needed depending on the data source.

### **CONSULTATIONS WITH SUBJECT MATTER EXPERTS**

The Center is home to faculty and staff who are experts in a variety of different fields. These include:

- **Directors:** Senior researchers with extensive experience in conducting clinical, observational, and epidemiological research studies
- **Epidemiologists:** Skilled in protocol and grant development, study design, and data analysis
- **Biostatisticians:** Experts in statistical aspects of protocol and grant development, study design, and data analysis
- **Database developers:** Experts in database design, development, administration, data management, and survey collection
- **Research coordinators:** Knowledgeable in IRB protocols, study management, data collection and cleaning, key informant in-depth interviewing, focus groups, and logistics

Members are eligible for free consultations for a limited amount of time. Assistance that is more extensive will require a collaborative effort and funding.

### **PILOT FUNDS**

Great ideas require funding. To assist with getting projects off the ground, members are eligible to apply for pilot funds. A detailed study proposal is required. Center leadership determines funding selection.

## **CROSS-COLLABORATION WITH OTHER MEMBERS**

The primary goal of developing Center membership is to promote and facilitate collaborations. Utilizing the data collected during membership enrollment, the Center will connect interested members and affiliated institutions.

## **GRADUATE STUDENT MENTORSHIP**

UTHealth School of Public Health is home to almost 1300 graduate students spread across six campuses in Houston, Austin, Brownsville, Dallas, El Paso, and San Antonio. Members interested in providing mentorship and real-world research experience can be matched with graduate students. A detailed outline of the work the graduate student will be doing is required. Authorship on publications may be required based on students' contributions.

## **EVENTS AND SEMINARS**

Stay connected with upcoming events and seminars. The Center hosts biweekly seminars that members are invited to attend. Topics range from basic sciences to translational research and community studies. Members may also schedule to be a presenter. Seminars are a great way to meet fellow researchers, gain insight into new advances, and begin research collaborations.

## **ANNUAL REPORT**

Members will receive an annual report summarizing publications, funding awards, and collaborations achieved through the Center.

# Faculty







**Sarah E. Messiah, PhD, MPH**

Professor & Director  
Epidemiology, Human Genetics,  
& Environmental Sciences  
UTHealth School of Public Health

Dr. Messiah is trained in advanced life course epidemiology and psychology and has broadly focused her career on the relationship between early life exposures and later life health events. As a tenured professor bridging both a pediatric hospital system (Children's Health, Dallas, Texas) and a school of public health (Department of Epidemiology, Human Genetics, and Environmental Sciences) in The University of Texas System, her primary area of research focus is on obesity prevention and treatment across the life course. She has published extensively in (1) the epidemiologic investigation of risk factors for childhood obesity and related cardiometabolic disease biomarkers with particular emphasis on ethnic group disparities; and (2) the dissemination and implementation of evidence-based tools, practices and programs into clinical and community-based settings to prevent childhood-onset obesity and its health-related consequences. She has been continuously NIH-funded her entire academic career. She serves as an expert advisor to promote healthy weight and cardiometabolic health throughout childhood with numerous national organizations, including the Consortium to Lower Obesity in Chicago Children, the University of Tennessee's Maternal and Child Health Advisory Board, the American Heart Association's Policy Recommendations for Obesity Prevention and Health Promotion in Child Care Settings, University of California Berkeley's Center for Weight and Health, the Robert Wood Johnson Foundation, the Women's Sports Foundation, and the Florida Department of Health.

As Center director, it is equally important to Dr. Messiah that she focus on team building, supporting, and mentoring the careers of up-and-coming junior and mid-career faculty, as well as graduate students and medical fellows. The center has ambition to develop national and international reach in maternal/child health and health disparities research so that it becomes a world-renowned destination for public health and clinical/medical students, trainees, fellows, and professional scholars. Dr. Messiah is currently a National Heart, Lung, and Blood Institute (NHLBI) PRIDE mentor to one junior faculty member, the primary sponsor of her current PhD student's National Institute of Diabetes and Digestive and Kidney Diseases (NIDDK) F31 predoctoral award, and a mentor on a U54 (Center on Latino Health Research Opportunities) and T32 (Translational Research Training in Gastroenterology/Hepatology) at her previous institution where she is a voluntary professor of pediatrics and public health sciences.

Dr. Allicock's research focuses on the elimination of cancer-related health disparities in minority populations. Her research has a particular emphasis on reducing risk factors (promoting healthy diets and physical activity) for cancer and chronic diseases in minority/underserved populations. Her research takes place in churches, community-based clinics, and low-income settings with marked health disparities.

Dr. Allicock's research portfolio also includes optimizing tailored health communications to improve health behaviors. For example, a current project includes a collaboration with Dr. Sarah Barlow, Dynamo Kids!/¡Niños Dinámicos!, an online program about healthy behaviors to help parents of children ages 6-12 who are overweight. The team is testing the feasibility and impact of a set of web-based educational modules on strategies to improve weight status, specifically constructing this program as part of the ongoing relationship between families and a child's primary pediatric provider.

Dr. Allicock has recently completed an online pilot study, eWellness, which focused on improving physical activity and nutrition among breast and colorectal cancer survivors. In addition, she has conducted physical activity, nutrition, and cancer support interventions using peer support, smartphones, and web-based tailoring to improve diet and physical activity among both the general population and cancer survivors. She is currently working on two projects focused on understanding the impact of COVID-19 on adolescent and young adult cancer survivors and with breast and colon cancer survivors in a safety net hospital.



**Marlyn Allicock, PhD, MPH**

Assistant Professor  
Health Promotion & Behavioral  
Sciences  
UTHealth School of Public Health





**Folefac D. Atem, PhD**

Assistant Professor  
Biostatistics & Data Science  
UTHealth School of Public Health

Dr. Atem's primary research of interest is in developing nonparametric and semiparametric estimators with application to causal inference, censored predictors, missing data problems, and mixed model theory. He also investigates developing statistical methodology for both observational and experimental studies that make efficient use of the data collected by investigators while limiting the assumption about the data. He has mastered many different well-developed statistical methodologies to apply them in the etiology of a disease or to use as an instrument in the understanding of different health conditions. He has developed several methodologies for censored data using single imputation with bootstrap and multiple imputation. Dr. Atem has developed several statistical models for the association of age on onset in offspring and parent of brain, heart, and other terminal diseases. These methodologies have published in high-impact statistical journals such as Biometrics, Statistics in Medicine, Statistical Methods in Medical Research, Biometrical, and the Journal of the Royal Statistical Society: Series C. Dr. Atem has published over 50 manuscripts with at least five with the Center for Pediatric Population Health.

Dr. Atem is the lead statistician on several studies conducted at the Center for Pediatric Population Health, the latest being the understanding of obesity in preschoolers.

Dr. Balasubramanian is a physician, epidemiologist, and health services researcher with expertise in cancer prevention and control, primary care, and dissemination and implementation science. Her research focuses on developing rigorous mixed-methods approaches to evaluating interventions and understanding the multilevel determinants (patient, provider, health system, community) of suboptimal care quality. Dr. Balasubramanian employs a multidisciplinary team science model to guide her research program. Her goal is to enhance care quality and outcomes for patients suffering from debilitating chronic conditions such as diabetes, hypertension, cardiovascular disease, depression, and cancer. She has received funding from the National Cancer Institute (NCI); the Agency for Healthcare Research and Quality (AHRQ); National Heart, Lung, and Blood Institute (NHLBI); and other federal, state, and not-for-profit organizations and foundations.



**Bijal A. Balasubramanian,  
MBBS, PhD**

Regional Dean, Dallas  
Associate Professor  
Epidemiology, Human Genetics,  
& Environmental Sciences  
UTHealth School of Public Health

Currently, Dr. Balasubramanian leads the quantitative evaluation of the AHRQ-funded EvidenceNOW Initiative examining implementation strategies to improve heart health in 1500 primary care practices spanning 12 states. She is also co-principal investigator on the NCI-funded Project CONNECT, which is implementing strategies to bridge gaps between oncology and primary care for breast and colorectal cancer patients with multiple chronic conditions.

As regional dean for UTHealth School of Public Health in Dallas, Dr. Balasubramanian leads a campus with faculty in four departments, along with administrative and research staff members, and approximately 109 students (Spring 2020). She also directs the MD/MPH dual program in partnership with UT Southwestern Medical School.



**Brad Cannell, PhD, MPH**

Associate Professor  
Epidemiology, Human Genetics,  
& Environmental Sciences  
UTHealth School of Public Health

Dr. Cannell's research is broadly focused on healthy aging and health-related quality of life. Specifically, he has published research focusing on preservation of physical and cognitive function, living/aging with disability, and understanding/preventing elder abuse. Additionally, he has a strong background and training in epidemiologic methods, and predictive analytics. He has been principal or co-investigator on multiple trials and observational studies in community and health care settings. He is currently the principal investigator on multiple data-driven federally funded projects that utilize technological solutions to public health issues in novel ways.

Dr. Cannell received his PhD in Epidemiology and Graduate Certificate in Gerontology in 2013 from the University of Florida. He received his MPH with a concentration in Epidemiology from the University of Louisville in 2009, and his BA in Political Science and Marketing from the University of North Texas in 2005. During his doctoral studies, he was a graduate research assistant for the Florida Office on Disability and Health, an affiliated scholar with the Claude D. Pepper Older Americans Independence Center, and a student-inducted member of the Delta Omega Honorary Society in Public Health. In 2016, Dr. Cannell received a Graduate Certificate in Predictive Analytics from the University of Maryland University College, and a Certificate in Big Data and Social Analytics from Massachusetts Institute of Technology.



He previously held professional staff positions in the Louisville Metro Health Department and the Northern Kentucky Independent District Health Department. He spent three years as a project epidemiologist for the Florida Office on Disability and Health at the University of Florida. He also served as an Environmental Science Officer in the U.S. Army Reserves from 2009 to 2013. He currently serves as a member of the Tarrant County Elder Abuse Task Force, a member of the Tarrant County Falls Prevention Task Force, and a member of the Texas Adult Protective Services Community Board.

Dr. Jetelina's research focuses on comprehensively improving patient outcomes by understanding how to best integrate patients' social factors, like trauma, homelessness, and food insecurity, into medical practice. She has led four health system-level interventions and evaluations that have integrated social factors into medical care.

Dr. Jetelina received her PhD in Epidemiology and completed postdoctoral research training in health services research. She was recently awarded an internal innovation grant to assess the effectiveness of screening for social determinants of health among medically complex pediatric families, by triangulating electronic health records with structured observations and key informant interviews to advance knowledge on how patient- and clinic-level factors, such as inpatient vs. outpatient settings, impact implementation and health care/community connectedness. Dr. Jetelina has also led an evaluation at Children's Health Medical Center to assess the multi-level effectiveness of a telehealth home visiting program for pediatric patients and their families in primary care. Through surveys, interviews, and EHR extraction, she found that the intervention significantly increased appropriate emergency department use.

She is the recipient of an American Cancer Society (ACS) grant to assess how intimate partner violence impacts breast and cervical cancer survivorship, quality of life, and health care utilization among Parkland Memorial Hospital patients. She has also been awarded a NIH training grant to assess how violence exposure among police officers impacts physical and mental health and their subsequent care utilization patterns. Finally, she has received a grant from the Department of Health and Human Services to integrate IPV screening into HIV clinics, and vice versa.



**Katelyn K. Jetelina, PhD, MPH**

Assistant Professor  
Epidemiology, Human Genetics,  
& Environmental Sciences  
UTHealth School of Public Health



**Gregory Knell, PhD, MS**

Assistant Professor  
Epidemiology, Human Genetics,  
& Environmental Sciences  
UTHealth School of Public Health

Dr. Knell's research broadly focuses on the distribution, determinants, and health outcomes associated with physical activity and other physical behaviors (sleep and sedentary behaviors). This includes understanding what factors make people more physically active, and the health implications of being physically active or inactive. Dr. Knell's research is population-based; therefore he takes an epidemiological approach to answering these questions.

Dr. Knell holds a joint research faculty appointment at the Children's Health Andrews Institute for Orthopaedics & Sports Medicine and an adjunct appointment at Akron Children's Hospital. At Andrews Institute, he works with clinicians to discover better and more innovative ways to prevent and treat sports-related injuries. This involves studying risk factors for sports-related injuries and developing evidence-based clinical practices for the management and treatment of injuries. Through this work, Dr. Knell has developed predictive algorithms using vestibular and ocular motor assessment measures to estimate clinical recovery time following a sports-related concussion. This provides the clinician and patient a timeline to recovery, which can be useful in providing patient-specific treatment options. He is currently engaged in a study on the effect of physical behaviors (physical activity and sleep) occurring during recovery from a concussion among a group of adolescent athletes.

Dr. Knell will soon begin a longitudinal cohort study of adolescent athletes to understand the sports-related injury risk factors and the short- and long-term health implications of suffering sport-related injury during adolescence. This study will be the first longitudinal cohort study with this level of breadth and depth of understanding on sports-related injuries during adolescence.



Dr. Sterling is a tobacco control behavioral scientist, with expertise in youth and young adult cigarette and novel tobacco product use, tobacco-related health disparities, and smoking cessation. She has served as the principal investigator of two Food and Drug Administration (FDA)/NIH-funded tobacco control regulatory sciences research grants that assessed flavored cigar smoking and identified risk perceptions for flavored cigar use among racially/ethnically diverse young adults. Her research has informed federal tobacco control policies, specifically the FDA's expansion of its regulatory authority to cigars. Currently she is the principal investigator of a tobacco regulatory sciences research grant that is examining the effects of implied modified risk statements on flavored cigar advertising on cigar use behaviors among young adults.

An important methodological feature of her research is the use of community-based research principles to engage with vulnerable communities to assess their health needs and develop culturally tailored, evidence-based interventions to optimize their health behavior outcomes and mitigate health disparities. She also has methodological expertise in mixed-methods (survey and qualitative research) and experimental study designs and latent variable modeling.

Dr. Sterling was trained as a cell and molecular biologist at Tulane University in New Orleans before receiving her doctorate in Health Promotion and Behavioral Sciences at UTHealth School of Public Health in Houston. She also leads Student Affairs and Community Outreach and Engagement for the Dallas campus.



**Kymberle L. Sterling, DrPH,  
MPH**

Associate Professor  
Health Promotion & Behavioral  
Sciences  
UTHealth School of Public Health

# Fellows







**Marisa Abbe, PhD, CPSTI**

Manager, Injury Prevention  
Children's Health

Adjunct Assistant Professor  
UTHealth School of Public Health

Dr. Abbe is the manager of The Safety Source – Injury Prevention Service at Children's Health. As a medical anthropologist with over 17 years of ethnographic and qualitative experience, she examines pediatric injury with holistic and relevant research methodology and develops targeted interventions and educational programs. She is particularly interested in child passenger safety and safe transport of children with special needs, pediatric drowning, caregivers' decision-making processes around injury risk, and how injury prevention education is provided in medical settings.

She is involved in several injury prevention projects including: an intervention to increase caregiver efficacy when using and installing car seats; how caregivers of children with special needs select and use a car seat; and developing a North Texas drowning registry. She is also an appointed member of the Injury Prevention Committee on the Governor's Emergency and Trauma Advisory Council where she is involved in statewide drowning data collection efforts.

Dr. Abbe serves as a qualitative research consultant on other hospitalwide projects including: An Assessment of Relational Needs of Refugee Youth; Understanding Health Disparities for Solid Organ Transplant Families; and The Consumer Experience for Limited English Proficiency Patients and Families.

Dr. McLeigh's primary research interest has been in preventive measures and interventions that seek to strengthen communities' capacity for family support, participation, and mutual assistance. This interest includes understanding how services to families should be designed and delivered, so as to promote child safety and well-being.

Dr. McLeigh is the director of Policy, Advocacy and Research at the Rees-Jones Center for Foster Care Excellence at Children's Health. She has adjunct appointments at University of Colorado Anschutz Medical Campus and Clemson University. She currently serves as the co-editor for American Journal of Orthopsychiatry and associate editor of the International Journal on Child Maltreatment.



**Jill D. McLeigh, PhD**

Director of Policy, Advocacy and  
Research  
Children's Health

# Staff







**Elishia Barnett**  
Administrative Assistant

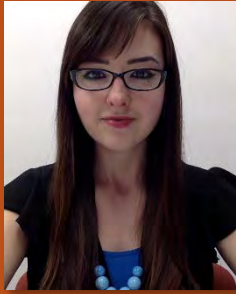
Barnett manages the daily administrative responsibilities at the Center for Pediatric Population Health. She graduated magna cum laude with a BS in Health Studies with a focus in Pre-Occupational Therapy at Texas Woman's University (TWU) in 2019. At TWU she was a member of the Honors Scholar Program and on the Dean's List and Chancellor's List.

Booker-Nubie is a recent MPH graduate and first-year Ph.D. student. Her research interests include breast and female-related cancers in low-income communities and countries. During her graduate research assistantships, she works on various projects including the evaluation of 1) metabolic bariatric surgery in post-treatment breast cancer survivors; 2) behaviors concerning metabolic bariatric surgery in clinically obese patients; 3) social determinants of health screening in complex pediatric health facilities; 4) intimate partner violence in breast and cervical cancer survivors; and 5) connecting multidisciplinary health teams both within and between federally qualified health centers and community centers for breast and colorectal cancer patients.

Booker-Nubie has aided in the writings of abstracts and published manuscripts, led oral and poster presentations at conferences, been lead analysts on several projects, and led/co-led research teams and collaborations to develop first authorships and community-engaged grants.



**Quiera Booker-Nubie**  
Graduate Assistant



**Elisa Morales Marroquín, PhD**  
Postdoctoral Fellow

Dr. Marroquín is a passionate obesity researcher and former Fulbright Scholar. She is currently working as an international postdoctoral fellow under the supervision of Dr. Messiah.

Dr. Marroquín obtained her PhD and MS from Baylor University and has a deep interest in increasing our understanding around the relationship between the gut microbiota and obesity. She has 14 peer-reviewed publications and one book chapter. During her first postdoctoral year at UTHealth School of Public Health, this past year she submitted five manuscripts, two of which have been already published, with three of them under current review consideration. A second book chapter is under revision for publication. As part of her postdoctoral training at UTHealth, she has submitted two grant applications and is currently working on a K99/R00 NIH grant application.

Mathew is a database administrator and manages the Center's data and database systems. He received his MS specializing in computer networks and security from Florida International University and has over 15 years of experience in the design, development, and administration of research, clinical, and administrative databases. He has been part of numerous clinical and observational studies in community and health care settings and has co-authored more than 30 peer-reviewed publications. The research he has collaborated on has been presented at various state, national, and international conferences. Mathew's primary research interests focus on pediatric obesity, nutrition, and health.



**M. Sunil Mathew, MS**  
Database Administrator



**Ashley Ofori, MPH**  
Research Coordinator

Ofori is a graduate of Texas A&M University and received her MPH in Health Policy and Management. She is the lead coordinator on a NIH R01 research study investigating disparities in bariatric surgery utilization. In addition to this, she is also involved in numerous qualitative research projects at the Center.

Ofori has interests in adult and adolescent obesity and health disparities research. In previous roles, she worked on projects targeting obesity in food desert communities. She has also worked on an intervention project aimed at educating mothers in developing

countries to improve exclusive breastfeeding rates. In the future, Ofori is looking forward to pursuing a PhD and opportunities in intervention and mitigation strategies in obesity prevention.

Uppuluri is a recent MPH graduate in Epidemiology from Texas A&M University. She is currently working on a research study investigating socioecological characteristics associated with patient-directed completion or non-completion of metabolic and bariatric surgery (MBS). She previously worked as a general dentist in India and as a graduate assistant at Texas A&M, which provided her an opportunity to gain experience in both clinical as well as population health sciences. She has a keen interest in chronic disease epidemiology and data analytics, and she worked on various research and voluntary projects at Texas A&M School of Public Health. Her long-term goal is to study the influence of various socio-economic factors on chronic disease outcomes. She respects the ideology at the Center for Pediatric Population Health, and she is glad that she is helping to make a difference in public health through research.



**Madhuri Uppuluri, MPH**  
Graduate Assistant



**Sitara Weerakoon, MPH**  
Graduate Assistant

Weerakoon is currently a second-year PhD student in Epidemiology. Her research interests are in maternal and child health, specifically social and environmental determinants of health. She also focuses on data analysis, statistical methods, and geospatial analysis. Her master's thesis combined the use of structural equation modeling and geographic information system mapping software. She has contributed to papers on obesity prevention and substance use and she is working with a longitudinal study that followed children of mothers who had used drugs during pregnancy. Prior to starting her PhD, Weerakoon received her MPH in Epidemiology from UTHealth School of Public Health and BA in Public Health from Austin College. She is a member of Delta Omega Honorary Society in Public Health.



Dr. Xie is a second-year PhD student in Epidemiology. She received her PharmD in 2017 from University of Nebraska Medical Center. Her ongoing research mainly focuses on 1) population-based studies in asthma; 2) epidemiological research on the health outcome and behaviors of patients with obesity; and 3) novel risk factors prediction using robust statistical methods. Dr. Xie is also collaborating with multiple research teams from the Parkland Center for Clinical Innovation, Departments of Internal Medicine and Obstetrics and Gynecology at The University of Texas Southwestern Medical Center to help predict spontaneous preterm birth among socioeconomically disadvantaged women and examine the pattern of contraceptive utilization after Medicaid expansion. She has co-authored over a dozen manuscripts and nine abstracts accepted as a poster presentation at various national and international meetings. Dr. Xie has received the Women in Science and Medicine Advisory Committee Travel Award for outstanding poster presentation at UT Southwestern. She is also the recipient of the Denton A. Cooley, MD, Transformation and Hope Scholarship and the J. Fred Annegers Memorial Scholarship.



**Luyu (Amber) Xie, PharmD**  
Graduate Assistant



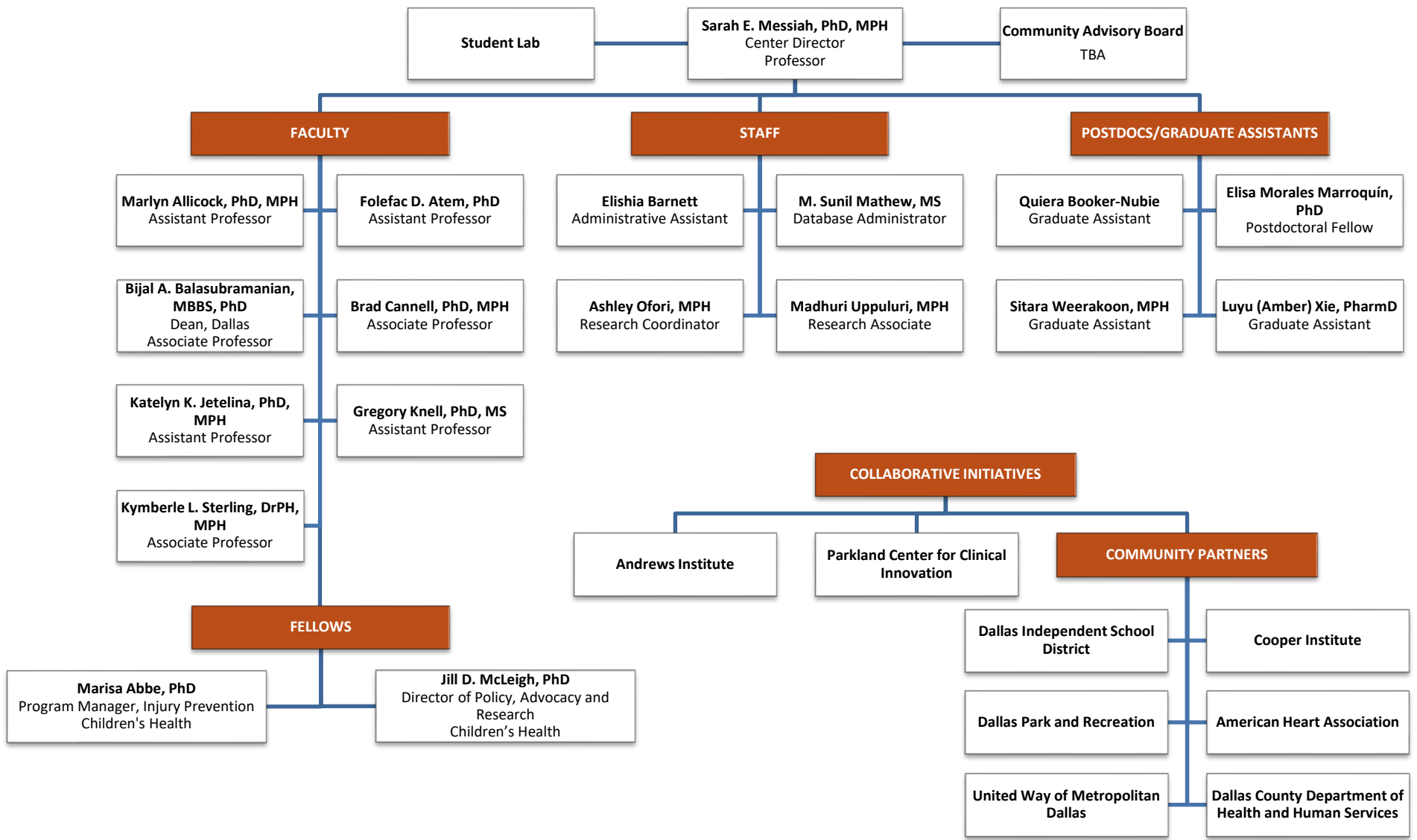




# Organizational Chart







**Student Lab**

**Sarah E. Messiah, PhD, MPH**  
Center Director  
Professor

**Community Advisory Board**  
TBA

**FACULTY**

**Marlyn Allicock, PhD, MPH**  
Assistant Professor

**Folefac D. Atem, PhD**  
Assistant Professor

**Bijal A. Balasubramanian, MBBS, PhD**  
Dean, Dallas  
Associate Professor

**Brad Cannell, PhD, MPH**  
Associate Professor

**Katelyn K. Jetelina, PhD, MPH**  
Assistant Professor

**Gregory Knell, PhD, MS**  
Assistant Professor

**Kymberle L. Sterling, DrPH, MPH**  
Associate Professor

**STAFF**

**Elishia Barnett**  
Administrative Assistant

**M. Sunil Mathew, MS**  
Database Administrator

**Ashley Ofori, MPH**  
Research Coordinator

**Madhuri Uppuluri, MPH**  
Research Associate

**POSTDOCS/GRADUATE ASSISTANTS**

**Quiera Booker-Nubie**  
Graduate Assistant

**Elisa Morales Marroquin, PhD**  
Postdoctoral Fellow

**Sitara Weerakoon, MPH**  
Graduate Assistant

**Luyu (Amber) Xie, PharmD**  
Graduate Assistant

**COLLABORATIVE INITIATIVES**

**Andrews Institute**

**Parkland Center for Clinical Innovation**

**COMMUNITY PARTNERS**

**Dallas Independent School District**

**Cooper Institute**

**Dallas Park and Recreation**

**American Heart Association**

**United Way of Metropolitan Dallas**

**Dallas County Department of Health and Human Services**

**FELLOWS**

**Marisa Abbe, PhD**  
Program Manager, Injury Prevention  
Children's Health

**Jill D. McLeigh, PhD**  
Director of Policy, Advocacy and  
Research  
Children's Health

# Databases and Data Repositories



## Website and Database Servers

The Center's website was recently launched:

- Information about new projects, research, achievements, and collaborations
- Integrated form for interested researchers to connect and begin collaborations with the Center's faculty and staff

With ongoing support from UTHealth and School of Public Health IT departments, the Center securely manages numerous databases:

- Composed of two database servers and two web servers, part of School of Public Health's IT Services secure data environment
- Manages research and administrative databases and a data repository for numerous large datasets

## Databases

### **DETECTION OF ELDER ABUSE THROUGH EMERGENCY CARE TECHNICIANS (DETECT) DATABASE**

- Research database for Dr. Brad Cannell's study "A Health and Safety Interview for Adults Aged 65 and Older Who Recently Used Emergency Medical Services"
- Allows for the real-time capture of data in the field by EMTs
- Streamlines data importing from external data source and participant randomization
- Integrates with Qualtrics for capture of study consent and management of participant incentives and RStudio via ODBC for real-time data analysis

### **UTILIZATION OF INTERPRETER SERVICES**

- Children's Health Main ED and Fast Track physicians and clinical staff assessing the utilization and challenges of interpreter services

### **GRANTS AND FUNDING DATABASE**

- Matches funding opportunities with appropriate investigators
- Automated e-mails to faculty that opt in, listing grant opportunities based on specific research interests



## Data Repositories

### **FITNESSGRAM**

- Data repository of the physical and aerobic fitness records of students grades 3-12 across 6,400 schools within the state of Texas between 2010 and 2017
- FitnessGram data has been merged with geographic information system and school-level demographic data

### **DISD BREAKFAST AFTER THE BELL**

- Deidentified academic and attendance data of Breakfast After the Bell

### **INTEGRATED POSTSECONDARY EDUCATION DATA SYSTEM (IPEDS)**

- Interrelated surveys conducted annually across postsecondary educational institutions in the U.S. focusing on institutional characteristics, costs, admissions, enrollment, and student success

### **THE MATERNAL LIFESTYLE STUDY (MLS)**

- Longitudinal cohort data of mothers who used polysubstances (cocaine, alcohol, marijuana) during pregnancy and follow-up of their children to age 16; multiple neurocognitive outcome measures

### **METABOLIC AND BARIATRIC SURGERY ACCREDITATION AND QUALITY IMPROVEMENT PROGRAM (MBSAQIP)**

- Patient-level aggregate data from MBSAQIP-participating centers of individuals who have undergone metabolic and bariatric surgery

### **NATIONAL HEALTH AND NUTRITION EXAMINATION SURVEY (NHANES)**

- Research survey data assessing the health and nutritional status of adults and children in the U.S. over time

### **NATIONAL SURVEY OF CHILDREN'S HEALTH (NSCH)**

- National and state-level survey data on the physical and emotional health of children in the U.S., including access to and utilization of health care, receipt of care in a medical home, family

interactions, parental health, school and after-school experiences, and neighborhood characteristics

#### **NATIONAL TRAUMA DATA BANK**

- Data repository of the 2016 National Trauma Data Bank, one of the largest aggregations of U.S. trauma registry data
- Contains descriptive information about trauma patients, including demographics, injury information, and outcomes

#### **YOUTH RISK BEHAVIOR SURVEILLANCE SYSTEM (YRBSS)**

- Research survey data monitoring health behaviors that contribute to death, disability, and social problems among youth and adults in the U.S.

# Scientific Collaborations





SCIENTIFIC FOCUS	CENTER LEAD	CHILDREN'S LEAD	TANGIBLE OUTCOMES	FUTURE GOALS
<b>Social Determinants of Health (SDOH)</b>				
<b>Pilot project to implement SDOH tool in 3 sites (Phase 1)</b>	Dr. Katelyn Jetelina Dr. Sarah Messiah	Dr. Brad Tate	Published peer-reviewed manuscript; Jetelina internal award submission	Secure federal (NIH) funding; publications; Phase 2 implementation
<b>Interpreter Services for Equitable Care</b>	Sunil Mathew	Dr. Marisa Abbe	Quality Improvement project	Manuscript
<b>Developmental and Behavioral Pediatrics</b>				
<b>Increase in HPV vaccine rates</b>	Dr. Sarah Messiah	Dr. Jenny Francis	Manuscripts; pilot data for intervention	NIH funding based on American Cancer Society (ACS) funding; manuscripts on ACS-funded project
<b>Stress of parents of children with disability</b>	Dr. Sarah Messiah	Dr. Veronica Edgar Dr. Sari Bar	Build survey; research database; manuscript	Evidence-based program delivery; pilot funding
<b>Foster care health and wellness</b>	Dr. Katelyn Jetelina	Dr. Jill McLeigh Dr. Kim Stone Dr. Michelle Lombardo	National/local data analysis; partner with The Bassuk Center	Kellogg funding; NIH funding; dissemination and implementation research focus
<b>Healthy weight-DD/ID/CSHCN</b>	Dr. Sarah Messiah Dr. Amber Xie	Dr. Sari Bar	Abstract/manuscript from U.S. Department of Agriculture (USDA) project	Clinic-based intervention

SCIENTIFIC FOCUS	CENTER LEAD	CHILDREN'S LEAD	TANGIBLE OUTCOMES	FUTURE GOALS
<b>Foster care</b>	Dr. Katelyn Jetelina Dr. Sarah Messiah	Dr. Jill McLeigh	Healthy weight/nutrition program	Kellogg funding
<b>Foster care health studies</b>	Dr. Sarah Messiah (PhD student Sitara Weerakoon)	Dr. May Lau	National Survey of Family Growth (NSFG) analysis	2 manuscripts
<b>Sports Medicine and Orthopedics</b>				
<b>National Sport-related Injury Database (Rank One)</b>	Dr. Gregory Knell Sunil Mathew	Dr. John Abt Dr. Scott Burkhart Jeff Baggett	Database analysis; manuscript	Knell K01 submission, Fall 2021
<b>Sports-related concussion</b>	Dr. Gregory Knell	Chad Gilliland Dr. Scott Burkhart	Pilot of observational study; internal grant	R21 resubmission, June 2021
<b>Orthopedic injuries</b>	Dr. Gregory Knell	Dr. John Polousky	Injury database repository	Knell K01 submission, Fall 2021
<b>Psychosocial correlates of sport-related injury</b>	Dr. Gregory Knell	Dr. John Polousky Dr. John Abt Dr. Scott Burkhart	Longitudinal cohort of high school athletes	R01 intervention to prevent sport related injury
<b>Pediatric Gastroenterology</b>				
<b>COACH clinic/Get Up and Go</b>	Dr. Sarah Messiah	Dr. Sarah Barlow Dr. Olga Gupta	Get Up and Go dissemination and implementation manuscript	Local/federal funding
<b>Online intervention to help parents of children ages 6-12 who have overweight or obesity</b>	Dr. Marlyn Allicock	Dr. Sarah Barlow	Pilot intervention; internal grant	Implementation

SCIENTIFIC FOCUS	CENTER LEAD	CHILDREN'S LEAD	TANGIBLE OUTCOMES	FUTURE GOALS
<b>Pediatric Radiology</b>				
<b>Proper radiation Rx for weight; appendicitis</b>	Dr. Sarah Messiah	Dr. Cory Pfeifer	EHR data extraction and analysis	Multiple manuscripts
<b>Pediatric Surgery</b>				
<b>Bariatric surgery program</b>	Dr. Sarah Messiah	Dr. Faisal Qureshi	2 manuscripts under review; 2 published	R21 submission completed June 2020
<b>Pediatric traumatic brain injury</b>	Dr. Sarah Messiah Jared Wiegand	Dr. Faisal Qureshi	Multiple national claims and payer datasets secured	Multiple manuscripts, abstracts
<b>Pediatric Pulmonology/Asthma/Smoking Cessation/Vaping</b>				
<b>Asthma epi-national dataset analysis</b>	Dr. Sarah Messiah Dr. Amber Xie	Dr. Andrew Gelfand	Multiple manuscripts published (JAMA)	NIH funding for clinical intervention
<b>Adolescent vaping/e-cig</b>	Dr. Sarah Messiah	Dr. Davika Rao	Manuscripts (2 published)	NIH grant funding, or other for clinic-based intervention
<b>Adolescent vaping</b>	Dr. Sarah Messiah	Dr. Tanya Martinez	Setup of database to collect EHR data	NIH grant funding, or other for clinic-based intervention
<b>Primary ciliary dyskinesia center</b>	Dr. Sarah Messiah	Dr. Yadira Rivera-Sanchez	Setup of database to collect EHR data	NIH grant funding, or other for clinic-based intervention
<b>School health-vaping</b>	Dr. Kym Sterling	School health team	Pilot project	Manuscript



SCIENTIFIC FOCUS	CENTER LEAD	CHILDREN'S LEAD	TANGIBLE OUTCOMES	FUTURE GOALS
<b>Pediatric Emergency Medicine</b>				
<b>Pediatric emergency medicine faculty retirement survey</b>	Dr. Sarah Messiah Sunil Mathew	Dr. Beatrix Bansal Dr. Vincent Wang	Survey implementation complete; data analysis	Manuscript
<b>Pediatric Infectious Disease</b>				
<b>COVID-19 long term follow-up study</b>	Dr. Sarah Messiah	Dr. Jeff Kahn	C-19 registry set up	NIAID funding
<b>COVID-19 seroprevalence</b>	Dr. Sarah Messiah	Dr. Jeff Kahn	Document pediatric seroprevalence	Manuscript
<b>COVID-19 and child abuse &amp; STI</b>	Dr. Katelyn Jetelina	Dr. Jill McLeigh Dr. Suzanne Dakil Dr. Amanda Evans	Jetelina internal award submission; data analysis has begun	Manuscript; future funding
<b>Pediatric Dermatology</b>				
<b>Evaluation of pilot intervention to increase sunscreen use among elementary-aged children</b>	Dr. Brad Cannell	N/A	Published research protocol; research manuscripts	Apply for NIH grant
<b>General Pediatrics</b>				
<b>Children's school-based telehealth</b>	Dr. Sarah Messiah	Dr. Stormee Williams Karen Kaigan	Manuscript submitted to JAMA Peds	RWJF funding; foundation funding

SCIENTIFIC FOCUS	CENTER LEAD	CHILDREN'S LEAD	TANGIBLE OUTCOMES	FUTURE GOALS
<b>Medical District Primary Care</b>				
<b>TX CARES COVID-19 project</b>	Dr. Sarah Messiah	Dr. Dawn Johnson	Recruitment of patients	COVID-19, asthma, obesity projects
<b>Department of Internal Medicine</b>				
<b>Weight wellness research collaboration</b>	Dr. Sarah Messiah	Dr. Jaime Almandoz	Published manuscript; Phase 2 study	NIMHD C-19 supplement; diversity supplement
<b>Healthy Aging</b>				
<b>Detection of Elder Abuse Through Emergency Care Technicians (DETECT) study</b>	Dr. Brad Cannell Sunil Mathew	N/A	Data collection; longitudinal research study	Manuscripts
<b>CTSA/UTSW</b>				
<b>Community engagement core</b>	Dr. Bijal Bala Dr. Sarah Messiah	Dr. Simon Lee Others	Various: KL2 mentor (Messiah)	Future life course projects
<b>Miscellaneous/Community Partnerships</b>				
<b>Dallas Independent School District (DISD)</b>	Dr. Sarah Messiah Kelsey Craker Megin Parayil	DISD Food and Nutrition Department	Evaluation of breakfast program	Manuscripts
<b>Dallas Independent School District (DISD)</b>	Dr. Sarah Messiah	School Health Advisory Council (SHAC) Physical Activity Subcommittee	Elected co-chair of Physical Activity Committee	New policies; possible research collaboration

SCIENTIFIC FOCUS	CENTER LEAD	CHILDREN'S LEAD	TANGIBLE OUTCOMES	FUTURE GOALS
<b>Cooper Institute</b>	Dr. Sarah Messiah Dr. Bill Kohl	Brenda Paulsen Danielle Wesley Karen Kaighan	GoNoodle and FitnessGram evaluation	Manuscript; funding
<b>Cooper Institute</b>	Dr. Sarah Messiah	Brenda Paulsen	School Physical Activity Measurement Committee	New protocol development, ongoing
<b>Dallas Park and Recreation</b>	Dr. Sarah Messiah	After-school program	Evaluation; multiple meetings	Manuscripts for publication
<b>Parkland Center for Clinical Innovation</b>	Dr. Sarah Messiah Dr. Amber Xie	Dr. Donna Persaud Dr. Yolande Pengetnze	Preterm birth outcomes manuscript	Local funding of pilot project
<b>OrganWise Guys® Dallas-Fort Worth expansion</b>	Dr. Sarah Messiah Jodi Nerren, A&M USDA Cooperative Extension	Dr. Jill McLeigh	Pilot study	W. K. Kellogg Foundation
<b>United Way of Dallas</b>	Dr. Sarah Messiah	TBD	TBD	Local funding for preschool healthy weight interventions







# Publications

Sept 2019 – Sept 2020



JOURNALS

1. Natale RA, Weerakoon S, Woody M, Kolomeyer E, Pena K, Schlandant M, **Messiah SE**. Parent Obesity-Related Concerns in Community-Based Programs Serving Children with Developmental Disabilities. [published online ahead of print, Aug 16, 2020]. *Child Care Health Dev*. 2020. doi:10.1111/cch.12803. PMID: 32803796
2. Vidot DC, Ochoa LG, Chavez JV, Harrell MB, Camacho-Rivera M, Islan JY, Weiher M, Hlaing W, Rao D, **Messiah SE**. Medicinal and Recreational Cannabis Use During the COVID-19 Pandemic: Preliminary Epidemiologic Results from the COVID-19 Cannabis Health Behavior Study. In press, *J Add Dis*, Aug 12, 2020.
3. Sumarsono A\*\*, Wang J, Xie L, Chiang GC, **Messiah SE**, Singal AG, Mufti A, Chen C, Leveno M. Prognostic Value of Hypochloremia in Critically Ill Patients with Decompensated Cirrhosis Hypochloremia. In press, *Clin Care Med*, July 28, 2020.
4. Xie L\*, Rao D, Harrell M, Vidot D, Sterling K, Gelfand A, **Messiah SE**. Association Between E-Cigarette Use and Asthma in the United States Pediatric Population. *Pediatr Pulmonol*. July 27, 2020. doi:10.1002/ppul.24971. Online ahead of print. PMID: 32720458
5. Knell G, Burkhart SO, Caze T, Polousky JD, Kohl HW, **Messiah SE**. Association between concussion history and cognitive, behavioral, and emotional risk factors among United States high school athletes. *Am J Sports Med* July 21, 2020;363546520938776. doi:10.1177/0363546520938776. Online ahead of print. PMID: 32692937
6. Morales-Marroquin E\*, Kohl HW, Knell G, de la Cruz-Munoz N, **Messiah SE**. Resistance training in post-bariatric surgery patients: A systematic review. [published online ahead of print, July 16, 2020]. *Obes Surg*. 2020. doi:10.1007/s11695-020-04837-1. PMID: 3267172
7. Patel H\*, Hansen E, **Messiah SE**, D'Agostino E. The relationship between transportation vulnerability, transportation access to a physical activity afterschool program, and school attendance for youth. In press, *Transportation*, July 14, 2020.
8. D'Agostino E, Patel H, Hansen E, Mathew MS, Nardi M, **Messiah SE**. Targeting Transportation Equity to Reduce Youth Cardiovascular Health Disparities Related to Segregation. In press, *Journal of Racial and Ethnic Health Disparities*, July 6, 2020.
9. **Messiah SE**, Atem F, Lebron C, Ofori A, Mathew MS, Chang C, Natale R. Comparison of Early Life Obesity-Related Risk and Protective Factors in Non-Hispanic Black Subgroups. *Mater Child Health J*, June 25, 2020. doi:10.1007/s10995-020-02979-3. PMID: 32632842
10. Jetelina KK, Rodriguez P, Oke K, Mathew MS, Schoppa S, Booker-Nubie Q, Ali N, **Messiah SE**. Factors influencing the implementation of social determinants of health screening and referral processes in pediatric settings serving medically complex patients. *J Res Child*, June 16, 2020.



11. Vidot DC, Joseph W, Spadola C, Dao S, Daunert S, de la Cruz-Munoz, **Messiah SE**. Relationship Between Cannabis and Opioid Use on Weight Loss and Mental Health Duodenum Biomarkers among Ethnically Diverse Weight Loss Surgery Patients. In press, *Obes Surg*, June 15, 2020.
12. Prado G, Lee T, Tapia M, Martinez R, Lebron C, St. George S, **Messiah SE**. Family-Based Promotion of Healthy Weight Strategies in Overweight/Obese Adolescent Hispanics: A Randomized Controlled Trial. In press, *Amer J Prev Med*, June 12, 2020.
13. **Messiah SE**, Weerakoon S, Atem F, Shulte M, Lebron C, Kimbali S, Mathew MS, Chang C, Natale RA. Determinants of Accurate Visual Perception of Child Anthropometric Phenotype Among Ethnically Diverse Preschool Parents in the United States. [published online ahead of print, 2020 Jun 8]. *Health Soc Care Community*. 2020. doi:10.1111/hsc.13020.
14. Weerakoon SM\*, Keeton JM, Vidot DC, Arheart KL, **Messiah SE**. Relationship between risky behaviors and non-prescription opioid use among Asian American youth [published online ahead of print, June 4, 2020]. *J Ethn Subst Abuse*. 2020;1-10. doi:10.1080/15332640.2020.1772931.
15. Almandoz JP, Xie L, Schellinger JN, Mathew MS, Gazda C, Ofori A, Kukreja S, **Messiah SE**. Impact of COVID-19 Stay-at-Home Orders on Weight-Related Behaviors Among Patients with Obesity. In press, *Clinical Obesity*, June 2, 2020. [published online ahead of print, 2020 Jun 9]. *Clin Obes*. 2020. doi:10.1111/cob.12386.  
Ranked #2 for journal, and 99th percentile for Altmetric score:  
<https://www.altmetric.com/details/83741041>
16. Xie L\*, Gelfand A, Delclos G, Atem FD, Kohl HW, **Messiah SE**. Association between asthma and developmental disability and delay in the United States pediatric population. *JAMA Netw Open*. 2020;3(6):e207728. Published 2020 Jun 1. doi:10.1001/jamanetworkopen.2020.7728
17. Natale RA, Arheart KL, Atem F, Lebron C, Mathew MS, Chang C, Sardinas K, Shelnett K, Spector R, Altare F, **Messiah SE**. Comparison of Two Dissemination and Implementation Approaches of a Childcare Center-Based Obesity Prevention Program. In press, *J Beh Develop Ped*, May 11, 2020.
18. Silberstein J\*\*, Gwynn L, Mathew MS, Arheart KA, **Messiah SE**. Evidence to Support Universal Blood Pressure Screening in School-Based Clinical Settings. *J Sch Health*. 2020 Mar 31. doi:10.1111/josh.12893. [Epub ahead of print] PMID: 32236966.
19. Lebron C\*, Agosto Y, Lee T, Prado G, St. George S, Pantin H, **Messiah SE**. Family Mealtime Communication in Single-Parent Households among Overweight and Obese Hispanic Adolescents. [published online ahead of print, 2020 Jun 25]. *J Nutr Educ Behav*. 2020;S1499-4046(20)30114-7.
20. Morales-Marroquin E\*, Hansen B, Lighthouse G, de la Cruz-Munoz N, **Messiah SE**. Comparison of methodological approaches to human gut microbiota changes after metabolic and bariatric surgery: A systematic review. *Obes Rev*. 2020 Aug;21(8):e13025. doi:10.1111/obr.13025. Epub 2020 Apr 6.

21. Westrick A\*, Liu S, **Messiah SE**, Koru-Sengul T, Hlaing W. Hospital Length of Stay after Bariatric Surgery by Race/Ethnicity and Procedure Type among Florida Patients in 2016. *J Natl Med Assoc*. 2020 Mar 17. pii: S0027-9684(20)30031-6. doi:10.1016/j.jnma.2020.02.007. [Epub ahead of print] PMID: 32197897
22. Keeton J, Ofori A, Booker Q, McAdams C, Schneider B, **Messiah SE**. Socioecological Factors That Inform the Decision to Have Metabolic and Bariatric Surgery Utilization in Ethnically Diverse Patients. *Obes Surg*. 2020 Feb 15. doi:10.1007/s11695-020-04454-y. [Epub ahead of print] PMID: 3206085
23. Ofori A, Keeton J, Booker Q, McAdams C, Schneider B, **Messiah SE**. Socioecological Factors Associated with Metabolic and Bariatric Surgery Utilization: A Qualitative Study. *Surg Obes Relat Dis*. 2020 Feb 10. pii: S1550-7289(20)30073-3. doi:10.1016/j.soard.2020.01.031. [Epub ahead of print] PMID: 32139155
24. Lebron C\*, Ofori A, Sardinas K, Lucaes M, Natale R, **Messiah SE**. Barriers and Facilitators to Obesity Prevention Dissemination and Implementation Efforts in the Child Care Center Setting from the Provider Perspective. *Child Care: Health and Development*, 2020;1–8. doi:10.1111/cch.12752.
25. Xie Y\*, Bauer C, Atem F, Gelfand A, **Messiah SE**. Prevalence of Pediatric Asthma by In-Home Environmental Tobacco Smoke Exposure in United States, 2016-2017. *J Asthma*. 2020 Jan 6:1-8. PMID: 31877060
26. **Messiah SE**, Sacher PM, Yudkin J, Ofori A, Qureshi F, Schneider B, Hoeschler D, Barlow SE. Application and Effectiveness of eHealth Interventions for Bariatric Surgery Patients: A Systematic Review. *Digital Health* 2019; 5: 1–21. PMID: 32030193
27. D’Agostino E, Frazier S, Hansen E, Nardi M, **Messiah SE**. Association of a park-based violence prevention and mental health promotion afterschool program with youth arrest rates. *JAMA Netw Open*. 2020 Jan 3;3(1):e1919996. PMID: 31995210
28. Messiah SE, Vidot DC, Spadola C, Dao S, Daunert S, Cuesta C, de la Cruz-Munoz. Relationship between Anxiety and Depression Duodenum Biomarkers and Self-Report and Weight Loss in Young, Ethnically Diverse Weight Loss Surgery Patients. *J Bari Surg Pract Pat Care* 2020; doi:10.1089/bari.2019.0047.
29. Natale RA, Sudduth C, Dowling M, Nunez C, **Messiah SE**. Schladant M. Assistive Technology to Improve Literacy Among Preschoolers with Disabilities. *Assistive Technology Outcomes and Benefits*, Volume 14, October 15, 2019.
30. Kobayashi MA\*, Lee TK, PhD, Leite RO, Esquivas BN, Prado G, **Messiah SE**, St. George S. The Effects of Parental Stress on Physical Activity Among Hispanic Adolescents: Moderating Role of Family Communication and Gender. *J Phys Act Health*. 2019 Sep 26:1-10. doi:10.1123/jpah.2018-0269. [Epub ahead of print]. PMID: 31557723
31. **Messiah SE**, Sacher PM, Yudkin J, Qureshi F, Hoeschler D, Barlow SE. Partnering Support Interventions with Bariatric Surgery to Maximize Health Outcomes in Adolescents with Severe

Obesity. *Obesity (Silver Spring)*. 2019 Nov;27(11):1784-1795. PMID: 31562699

32. Vidot DC, Powers M, Jayaweera D, Roy S, Dong C, **Messiah SE**. Blood Pressure and Marijuana Use: Results from a Decade of NHANES Data. *Amer J Health Behav*. 2019;43(5):887-897. PMID: 31439096
33. Monnette A\*, Koru-Sengal T, **Messiah SE**, Hlaing WW. Sociodemographic Correlates of Bariatric Surgery by Procedure Type among a Statewide Ethnically Diverse Patient Population Utilization of Bariatric Surgery in Florida Differs by Ethnicity. *Florida Public Health Review*, 2019;16:9-31.
34. Lebron C\*, Lee T, Prado G, St. George S, Pantin H, **Messiah SE**. Relationship Between Family Mealtime, Dietary Intake and Physical Activity Among Unhealthy Weight Hispanic Adolescents. *Appetite* 2019 Sep 1;140:169-179. PMID: 31075325

#### UNDER PEER REVIEW

1. Srikanth N\*, Xie L, Morales-Marroquin E, Xie L, Ofori A, de la Cruz-Munoz N, **Messiah SE**. Intersection of Smoking, E-Cigarette Use, Obesity and Metabolic and Bariatric Surgery: A Systematic Review. Submitted to *Nicotine and Tobacco Research*, July 23, 2020.
2. **Messiah SE**, Xie L, Atem F, Schneider B, Qureshi F, de la Cruz-Munoz N. Disparity Between Current United States Severe Obesity Trends and Metabolic and Bariatric Surgery Utilization: An NHANES and MBSAQIP Analysis. Revise and resubmit to *Annals of Surgery*, July 12, 2020.
3. Morales-Marroquin E, Xie L, Menighini L, Almandoz J, Mathew MS, Schneider B, de la Cruz-Munoz N, **Messiah SE**. Type 2 Diabetes and HbA1c Predict Hospital Readmission Post-Metabolic and Bariatric Surgery. Submitted to *Obesity*, June 25, 2020.
4. Pfeifer C\*, Xie A, Atem F, Mathew MS, **Messiah SE**. Body Mass Index as a Predictor of Accurate Sonographic Visualization of the Pediatric Appendix. Submitted to *Acta Radiology*, August 15, 2020.
5. Sumarasono A\*, Segar MW, Xie L, Atem F, **Messiah SE**, Francis J, Keshvani N. Impact of the Medicaid Expansion on Contraception Prescription Volume Between Early-Expander and Non-Expander States. Revise and resubmit, *Clin Care Med*, June 15, 2020.
6. Sobayashi MA\*, Lee TK, Lebron C, St. George S, Dorcius D, Prado G, **Messiah SE**. Intergenerational Cardiovascular Disease Risks Among Hispanics Living in the United States. Submitted to *Circulation*, June 19, 2020.
7. Xie L\*, Atem F, Gelfand A, Delcos G, **Messiah SE**. Association between sugar-sweetened beverage intake and asthma in the US pediatric population. Submitted to *Am J Prev Med*, July 26, 2020.
8. Weerakoon S\*, Atem F, **Messiah SE**, Jetelina K. Mediating effect of early childhood obesity on breastfeeding and asthma by geographical distribution in North Texas. Submitted to *J Adol Health*, August 13, 2020.



9. Weerakoon S\*, Atem F, Natale R, Atem NK, Kimbong A, Mathew MS, Lebron C, **Messiah SE**. Utilization of a Bivariate Mixed Effect Model to Evaluate Childcare Center-Based Obesity Prevention Program Nutrition and Physical Activity Outcomes. Submitted to *Am J Health Prom*, June 10, 2020.
10. Booth J, **Messiah SE**, Hansen E, Nardi M, D'Agostino E. Objective Measurement of Physical Activity Attributed to a Park-Based Afterschool Program Attendance. Submitted to *J Phys Act Health*, February 19, 2020.
11. Wang L, Xie Y\* (shared first author), Penegranze Y, Persaud D, **Messiah SE**, Ligon H. Preterm Birth Prediction Among Pregnant Women with No Classical Risk Factors. Submitted to *Preventive Medicine*, March 25, 2020.
12. Natale RA, Atem F, Lebron C, Mathew MS, Chang C, Sardinas K, Shelnut K, Spector R, Altare F, **Messiah SE**. Relationship Between the Preschool Nutrition and Physical Activity Environment and Child Body Mass Index. Revise and resubmit to *Childhood Obesity*, December 15, 2019.
13. Xie L\*, Atem FD, Natale R, **Messiah SE**. Parental Overestimation of Child Weight is Associated with More Weight Gain in Preschool Children with Developmental Disability. Submitted to *J Child Health Care*, November 11, 2019.
14. Kling H\*, D'Agostino E, Booth J, Dwyer E, Mathew MS, Hansen E, **Messiah SE**. Longitudinal Cardiovascular and Fitness Outcomes of a Neighborhood Park-Based Fitness Program in Ethnically Diverse Older Adults. Revise and resubmit, *J Phys Act Aging*, May 18, 2020.
15. Natale RA, Lebron C, **Messiah SE**. Application of the Reach Effectiveness-Adoption Implementation Maintenance (RE-AIM) Framework to Evaluate an Innovative Obesity Prevention Education Program in Early Childhood. Submitted to *Evaluation and Program Planning*, October 17, 2019.
16. Muheriwa R, Gerber K, Breche K, Xie L, **Messiah SE**, Vidot D. Cardiovascular and Respiratory Effects of Cannabis Use by Route of Administration: A Systematic Review. Submitted to *Addiction*, April 11, 2020.
17. Qureshi F, Wiegand J, O'Neil G, Klement J, Allen B, Franklin S, **Messiah SE**, Gupta O. Laparoscopic Sleeve Gastrectomy in Adolescents. Submitted to *Obesity Surgery*, Aug 5, 2020.
18. de la Cruz-Munoz N, Xie L, Quiroz HJ, Lipshultz SE, Mathew MS, **Messiah SE**. Weight Loss and Health Outcomes A Decade or More After Completing Bariatric Surgery as an Adolescent. Submitted to *NEJM*, August 15, 2020.
19. Rana P, Atem FD, Lebron C, Mathew MS, Natal RA, **Messiah SE**. Teacher Fidelity to a Child Care Center-Based Childhood Obesity Prevention Program. Submitted to *J School Health*, August 30, 2020.
20. Lebron C, Roit N, Mathew MS, Natale RA, **Messiah SE**. Preschool teacher health in a COVID-19 hotspot. Submitted to *Am J Pub Health*, August 17, 2020.

21. Williams S, Xie L, Hill K, Mathew MS, Perry T, Wesley D, **Messiah SE**. Utility of a school-based telehealth program for COVID-19. Submitted to *JAMA Ped*, August 24, 2020.

## BOOKS/CHAPTERS/MAGAZINES

1. Book proposal to Springer titled “Park Care”.
2. D’Agostino EM, Frazier S, Hansen E, **Messiah SE**. The Fit2Lead Program. Preventing youth violence in a park-based setting. National Recreation and Park Association Official Publication, October 31, 2019. <https://www.nrpa.org/parks-recreation-magazine/2019/november/the-fit2lead-program/>

## EDITORIALS

1. Yudkin J\*, **Messiah SE**. Understanding the etiology and impact of hatred globally in a public health context. *Int J Public Health*. 2019 Jul 5. doi: 10.1007/s00038-019-01279-0. [Epub ahead of print] No abstract available. PMID: 31273407
2. Gilford C\*, Gwynn L, **Messiah SE**. Strategies for recruiting non-Hispanic black men into the field of pediatrics. *Journal of Underrepresented and Minority Progress* 2019;3(1):23-32.

## ABSTRACTS

1. Wiegand J\*, Qureshi, F, **Messiah SE**. A Social Network Analysis of Healthcare Utilization in Pediatric Traumatic Brain Injury Victims. Presentation to American Public Health Association Annual Meeting and Expo 2020, San Francisco, CA, Scheduled October 24, 2020.
2. Wiegand J, **Messiah SE**, Pandya S, Qureshi F. Quantifying the Financial and Healthcare Burden of Severe Pediatric Traumatic Brain Injury: A Claims Based Study. Electronic Poster Presentation to American College of Surgeons Clinical Congress 2020, Chicago, IL, Scheduled October 4, 2020.
3. Wiegand J, **Messiah SE**, Pandya S, Qureshi F. Predicting Outcomes of Pediatric Traumatic Brain Injury Based on Healthcare Utilization at Diagnosis. Electronic Poster Presentation to American College of Surgeons Clinical Congress 2020, Chicago, IL, Scheduled October 4, 2020.
4. Ofori A, Weerakoon S, Booker Q, Mathew MS, **Messiah SE**. Demographic correlates of sleep hygiene among those with severe obesity. Presentation at the APHA’s Annual Meeting and Expo, San Francisco, USA, October 2020.
5. Xie L\*, Atem F, Gelfand A, Delclos G, **Messiah SE**. Association between asthma and sugar-sweetened beverages consumption in the United States pediatric population. Presentation at the APHA’s Annual Meeting and Expo, San Francisco, USA, October 2020.

6. Xie L\*, Rao D, Harrell M, Denise V, Gelfand A, Sterling K, **Messiah SE**. Association between asthma and e-cigarette use among the United States pediatric population. Presentation at the APHA's Annual Meeting and Expo, San Francisco, USA, October 2020.
7. Knell G, Burkhart SO, Caze II T, Polousky JD, Kohl III HW, **Messiah SE**. Association between concussion history and cognitive, behavioral, and emotional risk factors among American high school athletes: A cross-sectional analysis. American Public Health Association Annual Meeting. San Francisco, CA, USA. October 2020.
8. Booker Q, **Messiah SE**, Jetelina KK. Breastfeeding Benefits for Maternal Non-Communicable Diseases in South African Women: Investigating Gaps in Research. Accepted to the Black Maternal Health Summit, Atlanta, GA, July 20-21, 2020.
9. Weerakoon S, Vidot D, Atem F, Arheart KL, **Messiah SE**. Effect of in Utero Substance Use exposure, Birthweight and Ethnicity on Childhood Growth from Birth through 16 Years. Accepted as a feature platform presentation at the College on Problems of Drug Dependence Annual Scientific Meeting, Hollywood, FL, June 20-24, 2020.
10. Williams S, Xie L, Kaighan K, Wesley D, Perry T, Hall-Barrow J, **Messiah SE**. Implementation of a school-based telehealth program for asthma care among ethnically diverse students. Accepted as a poster presentation to the Pediatric Academic Society, Philadelphia, PA, May 2-5, 2020.
11. Wimbong A, Atem A, Atem C, Natale R, Mathew MS, **Messiah SE**. Impact of a childcare center-based obesity prevention program on nutrition and physical activity outcomes: Utilization of a bivariate mixed effect model approach. Accepted as a distinguished (top 10% of all submissions) poster to Digestive Disease Week, Chicago, Illinois, May 2-5, 2020.
12. Wiegand J, **Messiah SE**, Qureshi F. Long-Term Health Care Utilization by Pediatric Traumatic Brain Injury Patients. Poster Presentation to the UTHealth School of Public Health Student Research Day 2020, Houston, TX, Scheduled: April 9, 2020.
13. Jetelina K, Rodriguez P, Oke O, Booker Q, Mathew MS, **Messiah SE**. Implementing Social Determinants of Health Screening and Referral Processes in Pediatric Healthcare Settings Serving Medically Complex Patients: Lessons Learned. Selected as a feature oral presentation to the 2020 Texas Public Health Association Annual Education Conference, Dallas/Fort Worth Texas, March 30-April 1, 2020.
14. Williams S, Xie L, Kaighan, K; Wesley D, Perry T Barrow JH, **Messiah SE**. Implementation of a School-Based Telehealth Program for Asthma Care Among Ethnically Diverse Students. Selected as a feature oral presentation to the 2020 Texas Public Health Association Annual Education Conference, Dallas/Fort Worth Texas, March 30-April 1, 2020.
15. Weerakoon S\*, Vidot DC, Atem F, **Messiah SE**. Effect of in utero substance use exposure on childhood growth from birth through 16 years. Selected as an oral presentation to the 2020 Texas Public Health Association Annual Education Conference, Dallas/Fort Worth Texas, March 30-April 1, 2020.
16. Booker-Nubie Q\*, **Messiah SE**, Mathew MS, Jetelina KK. Clinical Care Teams' Self-Efficacy and



Attitudes Towards Social Determinants of Health in Pediatric Chronic Care Units. Selected as a poster presentation to the 2020 Texas Public Health Association Annual Education Conference, Dallas/Fort Worth Texas, March 30-April 1, 2020.

17. Xie L\*, Gelfand A, Martinez T, Rivera-Sanchez Y, Atem F, **Messiah SE**. Association between asthma and developmental disabilities in the United States pediatric population: A cross-sectional study. Selected as a poster presentation to the 2020 Texas Public Health Association Annual Education Conference, Dallas/Fort Worth Texas, March 30-April 1, 2020.
18. Weigand JG\*, Qureshi F, **Messiah SE**. Texas Prevalence Estimates of Pediatric Traumatic Brain Injury using Medical Claims Data. Selected as a poster presentation to the 2020 Texas Public Health Association Annual Education Conference, Dallas/Fort Worth Texas, March 30-April 1, 2020.
19. Keeton J, Ofori A, Booker Q, Schneider B, McAdams C, **Messiah SE**. Socioecological Factors That Inform the Decision to Have Metabolic and Bariatric Surgery Utilization in Ethnically Diverse Patients. Selected as a poster presentation to the 2020 Texas Public Health Association Annual Education Conference, Dallas/Fort Worth Texas, March 30-April 1, 2020.
20. Wiegand J, **Messiah SE**, Qureshi F. Texas Prevalence Estimates of Pediatric Traumatic Brain Injury using Medical Claims Data. Poster Presentation to the Texas Public Health Association 2020 Annual Education Conference Irving, TX, Scheduled March 30, 2020.
21. Booker Q, **Messiah SE**, Malherbe F, Roodt L, Cairncross L, Jetelina KK. Breastfeeding as a Protective Factor for Breast Cancer: A Pilot Study. Accepted as a poster presentation at the 8th Annual Houston Global Health Conference, March 6-7, 2020.
22. Ofori A, Keeton J, Mathew MS, **Messiah SE**. Determinants of Bariatric Surgery Utilization Among Ethnically Diverse Patients and Support Networks. Accepted as a poster presentation at the Celebration of Women in Science and Medicine at UT Southwestern, Dallas, Texas, February 11, 2020.
23. Xie L\*<sup>1</sup>, Gelfand A, Martinez T, Rivera-Sanchez Y, **Messiah SE**. Association between asthma and developmental disabilities in the United States pediatric population: a cross-sectional study. Selected as a poster presentation at the Celebration of Women in Science and Medicine at UT Southwestern, Dallas, TX, February 11, 2020.  
Selected for a travel award prize.
24. Weerakoon S\*, Vidot DC, Atem FD, **Messiah SE**. Effect of in utero substance use exposure on childhood growth from birth through 16 years. Accepted as a poster presentation at the Celebration of Women in Science and Medicine Advisory Committee Conference, Dallas TX, February 11, 2020.
25. Keeton J, Ofori A, Booker Q, Schneider B, McAdams C, **Messiah SE**. Socioecological Factors That Inform the Decision to Undergo Metabolic and Bariatric Surgery Among Ethnically Diverse Patients. Accepted as a poster presentation at the Celebration of Women in Science and Medicine at UT Southwestern, Dallas, Texas, February 11, 2020.

26. Booth J, **Messiah SE**, Hansen E, Nardi M, Hawver E, Patel H, Kling H, Okeke D, D'Agostino E. Objective measurement of physical activity attributed to a park-based afterschool program. Accepted as an oral presentation at the Healthy Active Living Conference, Orlando, Florida, February 2-5, 2020.
27. Patel H\*, **Messiah SE**, Hansen E, Nardi M, D'Agostino E. The relationship between transportation vulnerability, transportation access to a physical activity afterschool program, and youth school attendance. Accepted as a poster presentation at the Healthy Active Living Conference, Orlando, Florida, February 2-5, 2020.
28. **Messiah SE**, Sacher PM, Yudkin J, Ofori A, Qureshi F, Schneider B, Hoeschler D, Barlow SE. Partnering Lifestyle Intervention and Bariatric Surgery in Adolescents: A Systematic Review. Accepted as a poster presentation to the American Public Health Association Annual Meeting, Philadelphia, PA, November 9-14, 2019.
29. Xie Y\*, Bauer C, **Messiah SE**. Prevalence of Pediatric Asthma by In-Home Environmental Tobacco Smoke Exposure in United States, 2016-2017. Accepted as a poster presentation to the American Public Health Association Annual Meeting, Philadelphia, PA, November 9-14, 2019.
30. Ofori A, Keeton J, Spadola C, Mathew MS, **Messiah SE**. Socioecological Factors Associated with Metabolic and Bariatric Surgery Utilization: A Qualitative Study. Accepted as a late breaker poster presentation to the 37th Annual Obesity Society Meeting, Las Vegas, Nevada, November 3-7, 2019.
31. Keeton J, Ofori A, Spadola C, Mathew MS, **Messiah SE**. Relationship Between Childhood Family Mealtime and Disordered Eating in Young Bariatric Surgery Patients. Accepted as a poster presentation to the 37th Annual Obesity Society Meeting, Las Vegas, Nevada, November 3-7, 2019.
32. Liu S\*, Vidot D, **Messiah SE**, Hlaing W. Trends in utilization of metabolic and bariatric surgery procedures by race-ethnicity: A state-wide analysis. Accepted as a poster presentation to the American College of Epidemiology Annual Meeting, Pasadena, CA, September 7-10, 2019.
33. Lebron C\*, Guzman T, Agosto Y, Sutton D, Stoutenberg M, **Messiah SE**, StGeorge SM. A Qualitative Study of the Attitudes and Practices of Hispanic Mothers of Young Children around Feeding Practices and Food Choices. Poster session presented at the 2019 Society for Nutrition Education and Behavior Conference, Orlando, FL, July 27-30, 2019.

JOURNALS

1. Jetelina KK, **Knell G**, Molsberry RB. Impact of COVID19 pandemic on the severity of intimate partner violence. (In press: *Injury Prevention*).
2. Lanza K, Oluyomi A, Durand CP, Gabriel KP, **Knell G**, Hoelscher DM, Ranjit N, Salvo D, Walker TJ, Kohl III HW. Transit environments for physical activity: The relationship between micro-scale built environment features surrounding light rail transit stations and ridership in Houston, Texas. (In press: *Journal of Transport & Health*).
3. **Knell G**, Berninger N, Gabriel KP, Plasqui G, Crutzen R, ten Hoor G. Day-to-day associations of reported sleep duration with accelerometer measured physical activity and sedentary time among Dutch adolescents: an observational study. (In press: *Journal for the Measurement of Physical Behavior*).
4. Shuval K, Sahar L, Gabriel KP, **Knell G**, Wenstein G, Gal TG, Lobelo F, DiPietro L. Sedentary behavior, physical inactivity, and metabolic syndrome: Pilot findings from the Rapid Assessment Disuse Index (RADI) Study. (In press: *Journal of Physical Activity and Health*).
5. Morales-Marroquin E, Kohl III HW, **Knell G**, de la Cruz-Munoz N, Messiah SE. Resistance training in post-metabolic and bariatric surgery patients: a systematic review. (In press: *Obesity Surgery*).
6. **Knell G**, Robertson MC, Dooley EE, Burford K, Mendez KS. Health behavior changes during COVID-19 pandemic and subsequent “Stay-at-Home” orders. *Int J Environ Res Public Health*. 2020 August; 17(17), 6268. DOI: 10.3390/ijerph17176268.
7. Caze II TJ, **Knell G**, Abt J, Burkhart SO. Management and Treatment of Concussions via Tele-concussion in a Pediatric Setting: A Methodological Approach and Descriptive Analysis. *JMIR Pediatr Parent*. 2020 July; 3(2):e19924. PMID: 32634106. doi:10.2196/19924.
8. **Knell G**, Burkhart SO, Caze II TJ, Polousky JD, Kohl HW III, Messiah SE. Association between concussion history and factors relating to cognitive, behavioral, and emotional health among American high school athletes: a cross-sectional analysis. *Am J Sports Med*. 2020 July; 48(10): 2534-2543. PMID: 32692937. doi:10.1177/0363546520938776.
9. Taylor W, Durand CP, **Knell G**. Income Disparities in Obesity: Frames of Reference. *Health Equity*. 2019 December; 3(1). doi:10.1089/heq.2019.0064.



## ABSTRACTS

1. Burkhart S, **Knell G**, Abt J, Mathew MS, Loveland D. Sports Incident Injury Rates from 2007-2019 Using the Children's Health Andrews Institute Monitoring Platform for Sports Related Injuries (CHAMP-SRI). American Orthopedic Society for Sports Medicine Annual Meeting. July 2021. Nashville, TN.
2. **Knell G**, Burkhart SO, Caze II T, Polousky JD, Kohl III HW, Messiah SM. Association between concussion history and cognitive, behavioral, and emotional risk factors among American high school athletes: A cross-sectional analysis. American Public Health Association Annual Meeting. San Francisco, CA, USA. October 2020.
3. Caze II T\*, Price A, **Knell G**, Burkhart SO. (2020, April 16-18). VOMS scores relationship to King-Devick scores in males. Sports Neuropsychology Society Annual Meeting, Dallas, TX, USA. July 2020.
4. Price A\*, Caze II T, **Knell G**, Burkhart SO. (2020, April 16-18). VOMS scores relationship to C3 Logix Trail scores in females. Sports Neuropsychology Society Annual Meeting, Dallas, TX, USA. July 2020.
5. Lanza K, Oluyomi A, Durand C, Ranjit N, **Knell G**, Walker TJ., Hoelscher DM, Kohl III HW. Micro-scale transit environments for physical activity: The relationship between different domains of built environment features surrounding light rail train stations and ridership, the Houston TRAIN Study. Active Living Research Conference 2020. Orlando, FL, USA. February 2-5, 2020.
6. Walker TJ, Craig DW, **Knell G**, Pavlovic A, Thiele S, Kohl HW III. Gender differences across health-related fitness measure among elementary-aged children: a cross sectional study. Building Interdisciplinary Research Careers in Women's Health (BIRCWH) Annual Meeting. Bethesda, MD, USA. December 11, 2019.

## Katelyn K. Jetelina, PhD, MPH

## JOURNALS

1. **Jetelina KK**, Molsberry RJ\*, Reingle Gonzalez JM, Beauchamp AM\*, Hall T. (in press). Prevalence of mental illnesses and care utilization among law enforcement officers. *JAMA Network Open*.
2. **Jetelina KK**, Beauchamp AM\*, Reingle Gonzalez JM, Molsberry RJ\*, Bishopp SA, Lee SC. (in press). Cumulative, high-stress calls impacting adverse events among law enforcement and the public. *BMC Public Health*.
3. **Jetelina KK**, Rodriguez PA, Oke K, Mathew MS, Schoppa S, Booker-Nubie Q\*, Messiah SA. (in press). Factors influencing the implementation of social determinants of health screening and referral processes in pediatric settings serving medically complex patients. *Journal of Applied*

*Research on Children: Informing Policy for Children at Risk*. Special Issue: Implementation in Real World Settings: The Untold Challenges.

4. **Jetelina KK**, Carr C\*, Murphy CC, Sadeghi N, Lea J, Tiro JA. (in press). The impact of intimate partner violence on breast and cervical cancer survivors in an integrated, safety-net setting. *Journal of Cancer Survivorship*.
5. **Jetelina KK**, Oke O, Rodriguez P, Weerakoon S\*, Barlow SE. (in press) Implementation of a telehealth-enhanced home visiting program for families of young children. *Journal of Telemedicine and Telecare*.
6. Gonzalez JMR, Johansson-Love J, Edmonds L, **Jetelina KK**. (in press) The effect of electronic monitoring devices during substance use treatment on court completion, substance use, and recidivism among women in specialty courts. *American Journal of Drug and Alcohol Abuse*.
7. Carr C\*, McLeigh J, Roman H, Fults J\*, Reingle Gonzalez JM, Clutter MO, Sanders C, Baidhya S, Tsai R, **Jetelina KK**. (in press). The Impact of a Prior Child Protective Services Investigation on Healthcare Utilization. *Victims and Violence*.
8. Perez RA, **Jetelina KK**, Herrera I, Reingle Gonzalez JM. (in press). A Qualitative Study of the Stressors Experienced by Police Communications Workers. *Safety and Health at Work*.
9. **Jetelina KK**, Bishopp SA, Weigad JG\*, Reingle Gonzalez JM. (2020). Race/Ethnicity Composition of Police Officers in Officer-involved Shootings. *Policing: An International Journal*.
10. Curry S\*, Harrell M, **Jetelina KK**, Rix K, Coopwood T. (2020) Assessing physical assault hospitalizations at Dell Seton Medical Center in Austin TX from 2015-2018. *Texas Public Health Journal*. 72(1): 20
11. Paddock E\*, **Jetelina KK**, Bishopp SA, Gabriel KP, Reingle Gonzalez JM. (2019) Factors associated with civilian and police officer injury during 10 years of officer-involved shooting incidents. *Injury Prevention*.





# Research Funding and Support



AWARDEE	SOURCE	START DATE	END DATE	AMOUNT	STUDY TITLE
<b>Sarah E. Messiah, PhD, MPH</b>					
<b>Sarah Messiah (PI)</b>	National Institute of Health (NIMHD 1R01DK108644-01)	1/17/2019	8/30/2024	\$2,884,865	Socioecological Factors Associated with the Decision to Have Bariatric Surgery and Post-Operative Weight Loss
<b>Sarah Messiah (MPI)</b>	National Institutes of Health (NIMHD 1R01MD007724-05)	7/5/2013	3/31/2020	\$1,657,918	Families Preventing and Reducing Obesity Health Disparities in Hispanic Youth
<b>Sarah Messiah (MPI)</b>	National Institutes of Health (NIMHD – Supplement I)	1/1/2015	3/31/2020	\$70,160	Families Preventing and Reducing Obesity Health Disparities in Hispanic Youth (Supplement I)
<b>Sarah Messiah (MPI)</b>	National Institutes of Health (NIMHD – Supplement II)	1/1/2015	3/31/2020	\$65,160	Families Preventing and Reducing Obesity Health Disparities in Hispanic Youth (Supplement II)
<b>Sarah Messiah (PI)</b>	Micah Batchelor Award for Excellence in Children’s Health Research	1/1/2012	12/31/2019	\$300,000	Relationship Between Addiction and Gut Hormones in Young Bariatric Surgery Patients
<b>Sarah Messiah (Primary Sponsor)</b>	National Institutes of Health (5F31DK116533)	7/31/2018	7/30/2020	\$68,000	A Machine Learning Approach for Predicting Early Childhood Obesity Among Multiethnic Families

AWARDEE	SOURCE	START DATE	END DATE	AMOUNT	STUDY TITLE
<b>Gregory Knell, PhD, MS</b>					
<b>Gregory Knell (PI)</b>	UTHealth School of Public Health start-up funds	9/1/2019	5/31/2022	\$90,000	Pilot study on the Behavioral Factors Affecting Concussion Recovery Time Among Adolescents
<b>Gregory Knell (PI)</b>	Children's Health System of Texas	2/1/2020	1/31/2021	\$47,935	Behavioral Factors Affecting Concussion Recovery Time Among Adolescents
<b>Gregory Knell (PI)</b>	UTHealth	9/1/2020	8/31/2021	\$24,511	The Effect of Rates of Change in Cognitive Functioning Tasks on Concussion Recovery
<b>Katelyn K. Jetelina, PhD, MPH</b>					
<b>Katelyn Jetelina (PI)</b>	Office of Women's Health, Department of Health and Human Services	9/1/2019	8/31/2021	\$215,746	Preventing HIV Infection in Women through Expanded Intimate Partner Violence (IPV) Prevention, Screening, and Response Services (Project Safe Connect)
<b>Katelyn Jetelina (PI)</b>	CDC/NIOSH: K01OH011532	9/1/2018	8/31/2021	\$298,675	Development of a Police Officer Stress Algorithm to Prevent Adverse Events: A Mixed-Methods Approach



AWARDEE	SOURCE	START DATE	END DATE	AMOUNT	STUDY TITLE
<b>Katelyn Jetelina (PI)</b>	UTHealth School of Public Health start-up funds	9/1/2019	8/31/2021	\$75,000	The Preliminary Effectiveness of an Abuse, Neglect, and Human Trafficking Screener Across Three Clinics at Parkland Health and Hospital: A Pilot Study
<b>Katelyn Jetelina (PI)</b>	UTHealth School of Public Health PRIME Award	9/1/2019	8/31/2020	\$25,000	Implementing Social Determinants of Health into Medical Practice at an Integrated, Pediatric Health System

# Additional Activities

Sept 2019 – Sept 2020



## **EDITORIAL RESPONSIBILITIES**

- **Editorial Board Member:** World Journal of Diabetes (2010-present)
- **Editorial Board Member:** Cardiology Research (2010-present)
- **Reviewer:** Lancet (2013-present)
- **Reviewer:** Journal of the American Medical Association (JAMA, certification of participation, equal to CMES for quality and timeliness of reviews) (2009-present)
- **Reviewer:** Archives of Pediatric and Adolescent Medicine (JAMA) (2009-present)
- **Reviewer:** Journal of Pediatrics (2008-present)
- **Reviewer:** Pediatrics (CME recipient due to quality of reviews) (2008-present)
- **Reviewer:** Journal of the American College of Cardiology (2006-present)
- **Reviewer:** Journal of General Internal Medicine (2005-present)
- **Reviewer:** Medical Care (2004-present)
- **Reviewer:** Childhood Obesity (2011-present)
- **Reviewer:** European Journal of Pediatrics (2012-present)
- **Reviewer:** Circulation (2011-present)
- **Reviewer:** American Journal of Epidemiology (2011-present)
- **Reviewer:** International Journal of Pediatric Obesity (2009-present)
- **Reviewer:** Ethnicity and Disease (2009-present)
- **Reviewer:** Journal of Adolescent Health (2009-present)
- **Reviewer:** Journal of Urban Health (2003-present)
- **Reviewer:** American Journal of Kidney Diseases (2014-present)
- **Reviewer:** Research in Developmental Disabilities (2014-present)
- **Reviewer:** Journal of Immigrant and Minority Health (2012-present)
- **Reviewer:** Surgery for Obesity and Related Diseases (2013-present)
- **Reviewer:** Pediatric Obesity (2016-present)
- **Reviewer:** Nature (2019-present)

## **TEACHING**

### **Spring 2020**

#### **Current Issues in Pediatric Population Health II (PH 2998)**

This course provides a local, national, and global perspective on critical maternal and child health (MCH) and pediatric population health issues and health outcomes and will be taught within a lifecourse framework. Attention is paid to the biological, social, and behavioral factors that determine the health status of these populations; their health and social needs; and programs designed to meet these needs. We identify the determinants of these health outcomes and the current public policy surrounding these issues, including a special focus on women of reproductive age, adolescents, children, and infants. The course emphasizes health promotion, disease prevention, and supportive programs at different stages of a child's life including pregnancy.



**Pediatric Epidemiology (PH 2765)**

This course covers: the public health impact of pediatric conditions; special considerations in the design and conduct of epidemiological studies of pediatric conditions; resources for pediatric epidemiology; and the epidemiology of common pediatric conditions. Students gain an understanding of the impact of pediatric conditions on public health, learn to apply epidemiological skills to the study of pediatric conditions, and develop both written and scientific presentation skills.

**Summer 2020**

**Pediatric Epidemiology (PH 2765)**

This course covers: the public health impact of pediatric conditions; special considerations in the design and conduct of epidemiological studies of pediatric conditions; resources for pediatric epidemiology; and the epidemiology of common pediatric conditions. Students gain an understanding of the impact of pediatric conditions on public health, learn to apply epidemiological skills to the study of pediatric conditions, and develop both written and scientific presentation skills.

**Fall 2020**

**Current Issues in Pediatric Population Health (PH 2998) I:** Student lab. This lab supports a dynamic learning environment for students interested in the areas of maternal and child health and global health in particular. Weekly lab meetings/classes consist of dynamic discussions of (1) current topics in pediatric population health from the local to international level; (2) current student project progress and future directions; and (3) future projects.

**Pediatric Epidemiology (PH 2765)**

This course covers: the public health impact of pediatric conditions; special considerations in the design and conduct of epidemiological studies of pediatric conditions; resources for pediatric epidemiology; and the epidemiology of common pediatric conditions. Students gain an understanding of the impact of pediatric conditions on public health, learn to apply epidemiological skills to the study of pediatric conditions, and develop both written and scientific presentation skills.

Lab Members, Projects, and Output			
STUDENT	DEGREE	PROJECT	OUTPUT
Kelsey Craker	MSPH	DISD “Breakfast After the Bell” evaluation	Manuscript, Abstracts

<b>Megin Parayil</b>	MPH	DISD “Breakfast After the Bell” evaluation	Manuscript, Abstracts
<b>Luyu Xie, PharmD</b>	PhD	National Survey of Children’s Health (Health Resources and Services Administration) analysis	Multiple Manuscripts, Abstracts
<b>Sitara Weerakoon</b>	PhD	Secondary analysis of the Maternal Lifestyle Study data	F31 (NIH/NIDA) Scored, Multiple Manuscripts, Abstracts
<b>Josh Yudkin</b>	PhD	Obesity and chronic disease in youth	Multiple Manuscripts, Abstracts
<b>Quiera Booker</b>	PhD	Global/maternal and child health/health disparities	Multiple Manuscripts, Abstracts
<b>Jared Wiegand</b>	MPH	Traumatic brain injuries and concussions in youth sports	Multiple Manuscripts, Abstracts
<b>Cory Pfeifer, MD</b>	MPH	Body mass index effect on radiation dosage	Manuscript
<b>Priyanka Rana</b>	MPH	USDA Childcare Center Obesity Prevention Intervention	Manuscript

## THESIS AND DISSERTATION COMMITTEES

1. Faculty supervisor, Dr. Luyu Xie, PhD candidate in Epidemiology, Summer, 2019-present [Winner of 2020 UTSW Women’s Research Day Prize; Winner of 2020 Cooley Scholarship]
2. Faculty supervisor, Sitara Weerakoon, PhD candidate in Epidemiology, Summer 2019-present [Winner of 2020 Primm Singleton Minority Travel Award, College on Problems of Drug Dependence; 2020 Willerson Scholarship, UTHealth School of Public Health]
3. Faculty advisor, Joshua Yudkin, PhD candidate in Epidemiology, Fall, 2019-present [Winner of 2020 Fulbright Award]
4. Faculty independent study supervisor, Jared Weigand, MPH candidate, Summer 2019-present
5. Faculty independent study supervisor, Quiera Booker, MPH candidate, Summer 2019; and thesis chair, Spring 2020-present
6. Faculty independent study supervisor, Megin Parayil, MPH candidate, Summer 2019-present
7. Faculty independent study supervisor, Kelsey Craker, MSPH candidate, Fall 2019-present
8. Faculty mentor, Dr. Elisa Morales Marroquín, postdoctoral fellow, Fall 2019-present
9. Faculty advisor, Kristina Hall, PhD candidate in Epidemiology, Fall 2020
10. Faculty independent study supervisor, Priyanka Rana, MPH candidate, Spring 2020-present

## SERVICE

- **Co-Chair:** School Health Advisory Committee, Physical Activity sub-committee, Dallas Independent School District, (2018-present)
- **Member:** School Health Advisory Committee, Dallas Independent School District (2018-present)
- **Member:** Collin County Health and Wellness Alliance for Children Steering Committee (2018-present)
- **Member:** Dallas County Health and Wellness Alliance for Children Steering Committee (2018-present)
- **Member:** UTHealth School of Public Health in Dallas Campus Leadership Team

## Gregory Knell, PhD, MS

## EDITORIAL RESPONSIBILITIES

- **Ad hoc reviewer:** Preventing Chronic Disease (2020)
- **Ad hoc reviewer:** Journal of Affective Disorders (2020)
- **Ad hoc reviewer:** Pediatrics (2020)
- **Ad hoc reviewer:** Journal of Medical Internet Research (2019-present)
- **Ad hoc reviewer:** Journal of American Medical Association - Pediatrics (2019)
- **Ad hoc reviewer:** BMC Public Health (2018-present)
- **Ad hoc reviewer:** Journal of Public Health (2018)
- **Ad hoc reviewer:** Journal of Sport and Health Science (2018)
- **Ad hoc reviewer:** Journal of Clinical Medicine (2018)
- **Ad hoc reviewer:** International Journal of Environmental Research and Public Health (2018)

## TEACHING

### Spring 2020

#### Epidemiology III (PH 2710)

This course covers advanced topics and concepts in epidemiologic methods, with a particular emphasis on observational studies. This course continues to build upon the foundation laid in Epidemiology 1 in concepts, principles, and methods specific to epidemiology. A wide variety of tools that can be used to understand and evaluate the public's health are taught, including advanced techniques relevant to the design, analysis, and interpretation of epidemiologic research.



## Summer 2020

### Physical Activity Assessment and Surveillance (PH 5400)

The goal of this course is to provide students with an in-depth understanding of the various methods used to assess or measure physical activity and related constructs, including sedentary behaviors, energy expenditure, and physical fitness in individuals and populations. This understanding is achieved through a review of the current literature related to measurement methods and hands-on practice experiences with various measurement techniques, including reported and device-based methods. Here, the focus will be on techniques used to assess physical activity and sedentary behavior. Relevant topics of discussion will include: (1) measurement development, (2) measurement selection strategies, (3) data collection techniques and considerations, (4) computation of summary estimates, including principles of device-based data reduction strategies, (5) data analysis considerations, and (6) data interpretation and reporting. Behavioral, environmental, and policy-related correlates and determinants relevant to physical activity will also be discussed.

## THESIS AND DISSERTATION COMMITTEES

1. Jennifer Hale, DPT, PhD candidate; dissertation chair; “The association of reported and accelerometer-derived physical activity with Parkinson’s disease in women.”

## SERVICE

- **Primary Mentor:** CPRIT Summer Fellowship (2020)
- **Lead Network Member:** Texas Research-to-Policy Collaboration Project, Senator Nathan Johnson (2020-present)
- **Member:** Rank-One Health Scientific Advisory Board, Rank One Health+Sport, LLC (2020-present)
- **Alternate:** Faculty Council, UTHealth School of Public Health (2020-present)
- **Member:** Epidemiology Curriculum Committee, UTHealth School of Public Health (2020-present)
- **Reviewer:** Epidemiology Preliminary Examination Committee, UTHealth School of Public Health (2020-present)
- **Member:** Faculty Search Committee, Center for Pediatric Population Health, UTHealth School of Public Health in Dallas (2020)
- **Member:** Faculty Search Committee, Michael & Susan Dell Center for Healthy Living, UTHealth School of Public Health in Austin (2020-present)
- **Member:** Parental Leave Policy Faculty Advisory Committee, UTHealth at Houston (2019)

## EDITORIAL RESPONSIBILITIES

- **Reviewer:** Journal of General Internal Medicine
- **Reviewer:** Annals of Family Medicine
- **Reviewer:** Preventive Medicine
- **Reviewer:** Applied Clinical Informatics
- **Reviewer:** Pediatrics
- **Reviewer:** Violence and Victims
- **Reviewer:** Journal of Criminal Justice
- **Reviewer:** Policing: An International Journal of Police Strategies and Management
- **Reviewer:** Journal of Adolescent Health
- **Reviewer:** Drug and Alcohol Dependence
- **Reviewer:** BMC Public Health
- **Reviewer:** Children
- **Reviewer:** Journal of Occupational and Environmental Medicine
- **Reviewer:** Journal of American College Health
- **Reviewer:** Journal of Racial and Ethnic Health Disparities
- **Reviewer:** Journal of Substance Abuse Treatment
- **Reviewer:** Prevention Science
- **Reviewer:** Journal of Ethnicity in Substance Abuse

## AWARDS

- Nomination - APHA Public Health Practice Award for “Your Local Epidemiologist” (2020)
- Nomination - Office of Disease Prevention (ODP) Early-Stage Investigator Award (2019)
- UHealth School of Public Health PRIME Award (2019)
- Nomination - John P. McGovern Award for Outstanding Teaching (2019)

## TEACHING

### Spring 2020

#### **Quantitative Analysis for Public Health Research (PH 2858)**

This course bridges epidemiological and biostatistical skill sets. The overall objective is to provide students with the tools and hands-on experience of analyzing datasets guided by research questions. Students will learn how to conduct a research project from conceptualization to dissemination, including: development of analytic plans; cleaning and coding data; assessing the degree of missingness; evaluating and interpreting univariate, bivariate, and multivariate analyses

and building models; analyzing and conceptualizing interaction; and appropriate research dissemination avenues.

## SERVICE

- **Board of Directors:** Society for Advancement of Violence and Injury Research (2019-present)
- **Chair:** Parental Leave Working Group (2018-present)
- **Chair:** Dallas Epidemiology Admissions Committee (2018-2019)
- **Chair:** APHA Injury and Violence Control Student Awards Chair (2017-2018)
- **Chair:** UTHealth Center for Pediatric Health Faculty Search Committee (2018-present)
- **Member:** Academy of Violence and Abuse 2020 Conference Planning Committee
- **Member:** Society for Advancement of Violence and Injury Research (2016-present)
- **Member:** Academy of Violence and Abuse (2017-present)
- **Member:** Epidemiology Preliminary Exam Committee (2018-present)
- **Member:** Early Career Reviewer Program at the Center for Scientific Review, National Institutes of Health (2019-present)
- **Member:** American Public Health Association (Sections: Injury Control and Emergency Health Services; Epidemiology) (2015-present)
- **Member:** Faculty Council (2017-present)



# Plans for Growth and Future Goals



First, existing mechanisms will continue to be tapped to build the Center for Pediatric Population Health's reputation and eventually elevate it to a national and international Center of Excellence. The Association of Population Centers (APC) is an independent group of universities and research groups that foster collaborative demographic research and data sharing, translate basic population research for public policy decision-makers, and provide educational and training opportunities in population studies. The APC currently has over 40 Centers, including The University of Texas at Austin, located in 18 states across the nation. While some Centers do have themes of maternal and child health and family health, there is not one that (1) is hosted equally by a children's hospital and a university; and (2) focuses exclusively on pediatric health outcomes. Therefore, seeking APC membership would be a priority of this Center. Many of these Centers collaborate on national and international projects and this Center would become the APC go-to for all pediatric-related outcome resources including shared data and other resources.

Second, the Clinical and Translational Science Awards (CTSA) and NIH-sponsored pediatric networks/consortia have substantially increased the efficiency and speed of clinical and translational research. These initiatives offer new platforms for multidisciplinary collaboration and will be investigated as a resource for the Center. The committee believes that the CTSA could encourage pediatric research by developing common research agendas, joint protocols, normative data, biobanks, and extend existing pediatric research networks and establish new ones across CTSA sites. These great and often unique needs have stimulated considerable efforts to preserve independent funding and infrastructure support for pediatric research. At a time when the national CTSA trend is to fund larger universitywide research initiatives, this new independence initiative was signed into law on Jan. 15, 2007, as PL 109-687, supporting the need to address child health research issues in specialized ways, and thus will be sought out as infrastructure support for the Center. The UT Southwestern Medical Center CTSA application is currently under review and Drs. Messiah and Bala are co-investigators and Dr. Messiah is a lead mentor on the KL portion of the application.

Third, we will continue to build on the excellent collaborations and community partnership momentum the Center started in its inaugural year. The Center is actively participating in the Texas Research-to-Policy Collaboration Project, a nonpartisan network that aims to bridge research and policy by supporting partnerships between child health researchers and policymakers. We are actively engaged in conversations with Texas Reps. Nicole Collier and Stephanie Klick and their teams as we head into the 2021 legislative session.









## Center for Pediatric Population Health



[sph.uth.edu/research/centers/cpph](http://sph.uth.edu/research/centers/cpph)